

# KIBALE ASSOCIATION FOR RURAL AND ENVIRONMENTAL DEVELOPMENT (KAFRED)

*Equator Prize Winner*

*By: Tinka John, June 2011*

*Email: [tinkabigodi@gmail.com](mailto:tinkabigodi@gmail.com); Tel: +256 (0)772-468-113*

# Location



- In E. Africa - Uganda
- Next to Kibale Forest National Park, with highest primate densities in Africa, including our closet relatives.
- Other savan and mountain parks in the Albertine rift region

# BACKGROUND

- ▣ KAFRED was founded in 1992 by six community members with support from a Peace Corps Volunteer. The membership has today grown to 103, including affiliates groups e.g. Women, MDD, Credit \$ Savings
- ▣ KAFRED's overall goal is the use of tourism as a tool to promote conservation and enhance community development.

# Tourism Activities



Bird watching hotspot with  
over 200 Identified species

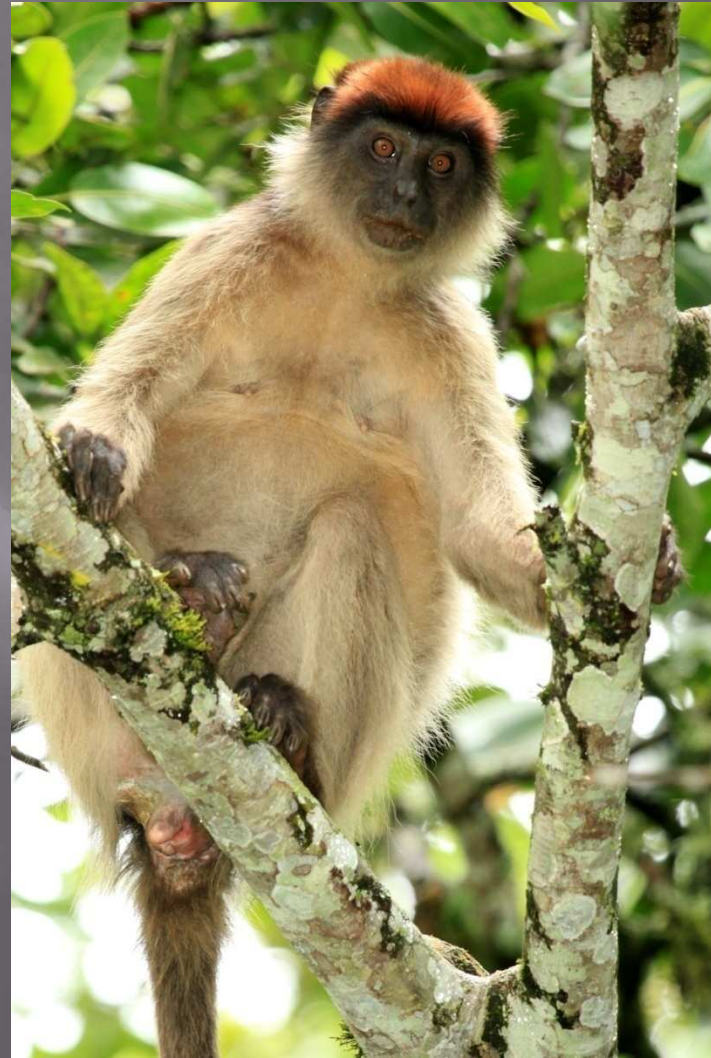


Home-stays and Traditional  
lunches





Nature and Village Walks



High primate density: 8 species



# Achievements



Founded Bigodi SS with over 300, promoting girl-child and conservation education



Conservation education programs in schools and the community



Crafts prepared for a specific market ready for export

Women training in handicraft product development and marketing



## Visitor numbers to the wetland

1994	1995	1996	1997	1998	1999	2000	2001
1195	1137	1050	1053	1401	578	525	504

2002	2003	2004	2005	2006	2007	2008	2009	2010
1501	1529	1972	2038	2373	3603	3264	3164	3922

Income increased by 2900% from 1994 to 2008

*Note that visitor numbers reduced from 1999 to 2001, due to the “Bwindi incident”!. KAFRED received 40% of the total visitor numbers to KNP in 2009*





Equator Initiative Finalists 2002,  
winner 2010 and beneficiary of  
the UNDP's - GEF Small  
Grants Program



Community bridges



A center for guide training





Built a house for mid-wives at Health Centre



A revolving fund for swamp neighbors



# Celebrating Earth Day 2011





# CKS MEETING IN NAIROBI - KENYA



- ▣ A member of UCOTA
- ▣ Tree planting project for swamp neighbours
- ▣ Partnerships with NCZoo/ UNITE, Kibale Fuelwood Project, MUBFS
- ▣ Attending COP10 MOP5 in Nagoya in 2010



# Challenges

- Human – wildlife conflicts
- Fluctuating visitor numbers
- Increasing population thus emergent community needs
- Conservation Versus Development needs
- Limited knowledge & skills to carry out research/other academic related activities
- Need to diversify income gener activities

# Some of the Future Plans

- ▣ More Conservation Awareness Programs
- ▣ Strategic planning in 2011
- ▣ Implement a gravity water project
- ▣ On -going support to Bigodi secondary
- ▣ Build a community hall in Bigodi town board
- ▣ Start a bee keeping demo

- ▣ Build staff houses for schools
- ▣ Capacity building of staff and members
- ▣ Primate sensusing
- ▣ Improving on the marketing strategies
- ▣ Engage more collaborators and stakeholders



~END~

Thank you & remember the

“BIG ONE”

