

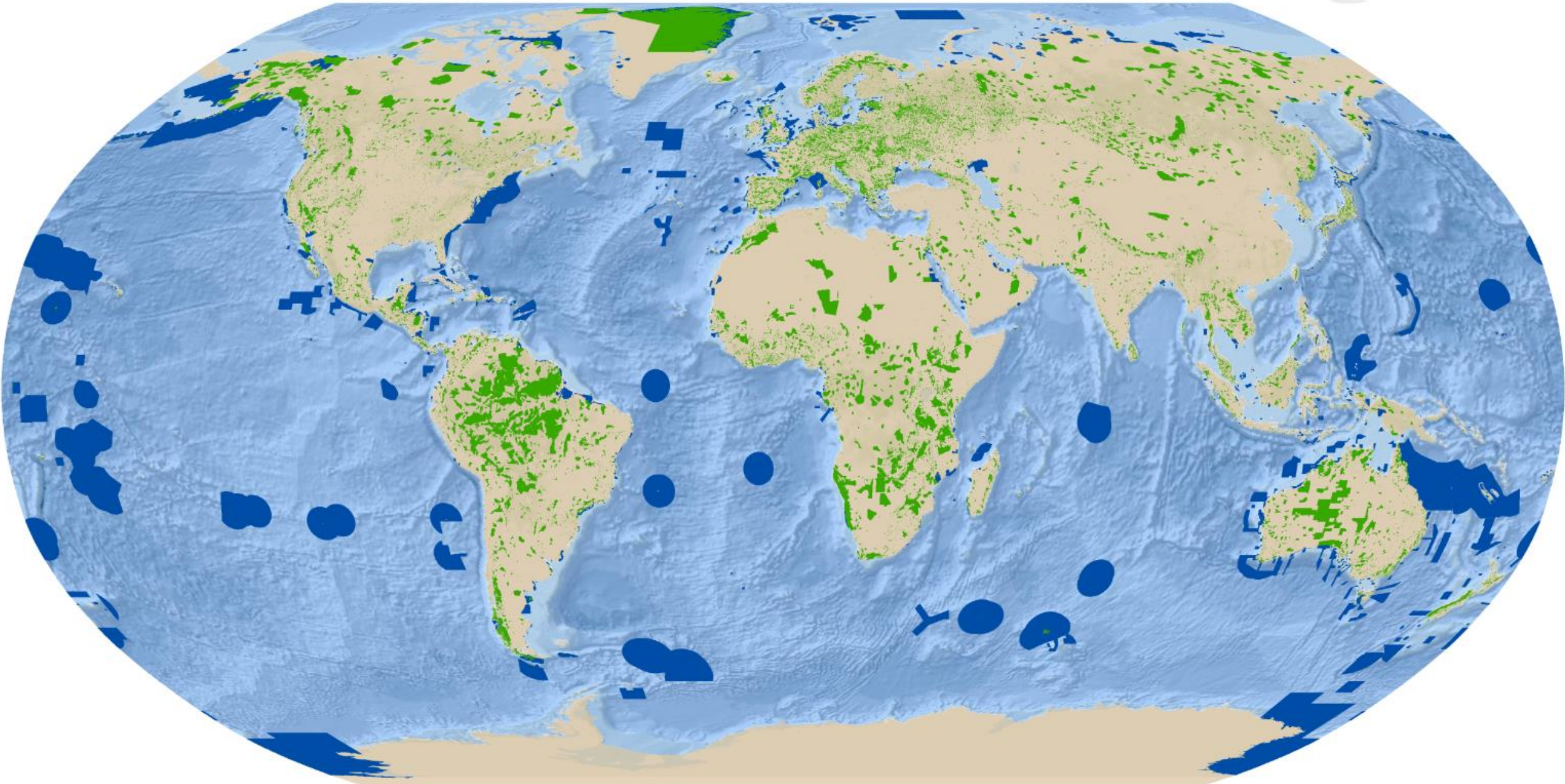
TRACKING PROGRESS ON TARGET 11

Dr. Colleen Corrigan, UNEP-WCMC

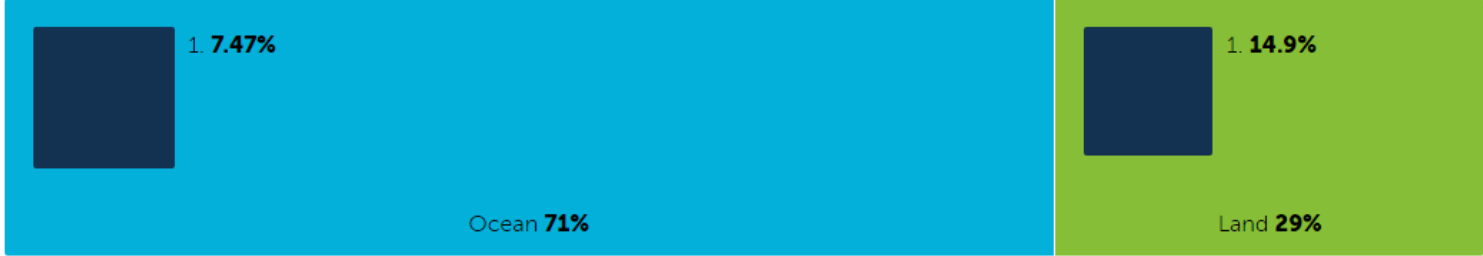
The World Database on Protected Areas

March 2019:
242,798 records – 92% polygons

Percentage of records
updated/validated in the past 12
months: 73%



Proportional coverage of protected areas in the land and ocean.



1. Proportion of cover by protected areas

Protected Planet Report 2018

Tracking progress towards global targets for protected areas



Protected Planet Digital Report

Tracking progress towards global targets for protected areas

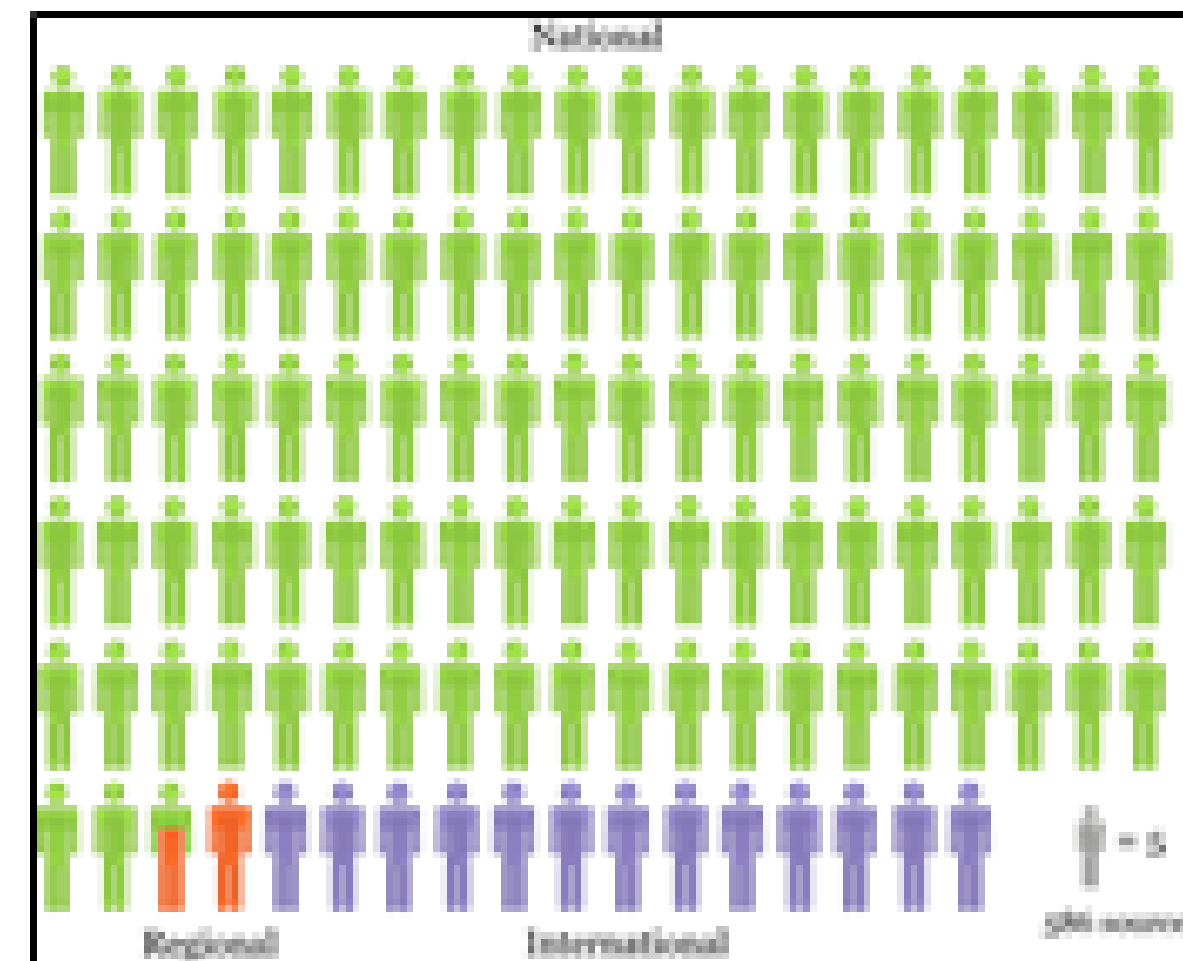
Protected Planet Reports are biennial landmark publications that assess the state of protected areas around the world. They are based on the data contained in the World Database on Protected Areas (WDPA), jointly managed by UNEP-WCMC and IUCN, as well as other relevant resources.

Last data update
January 2019

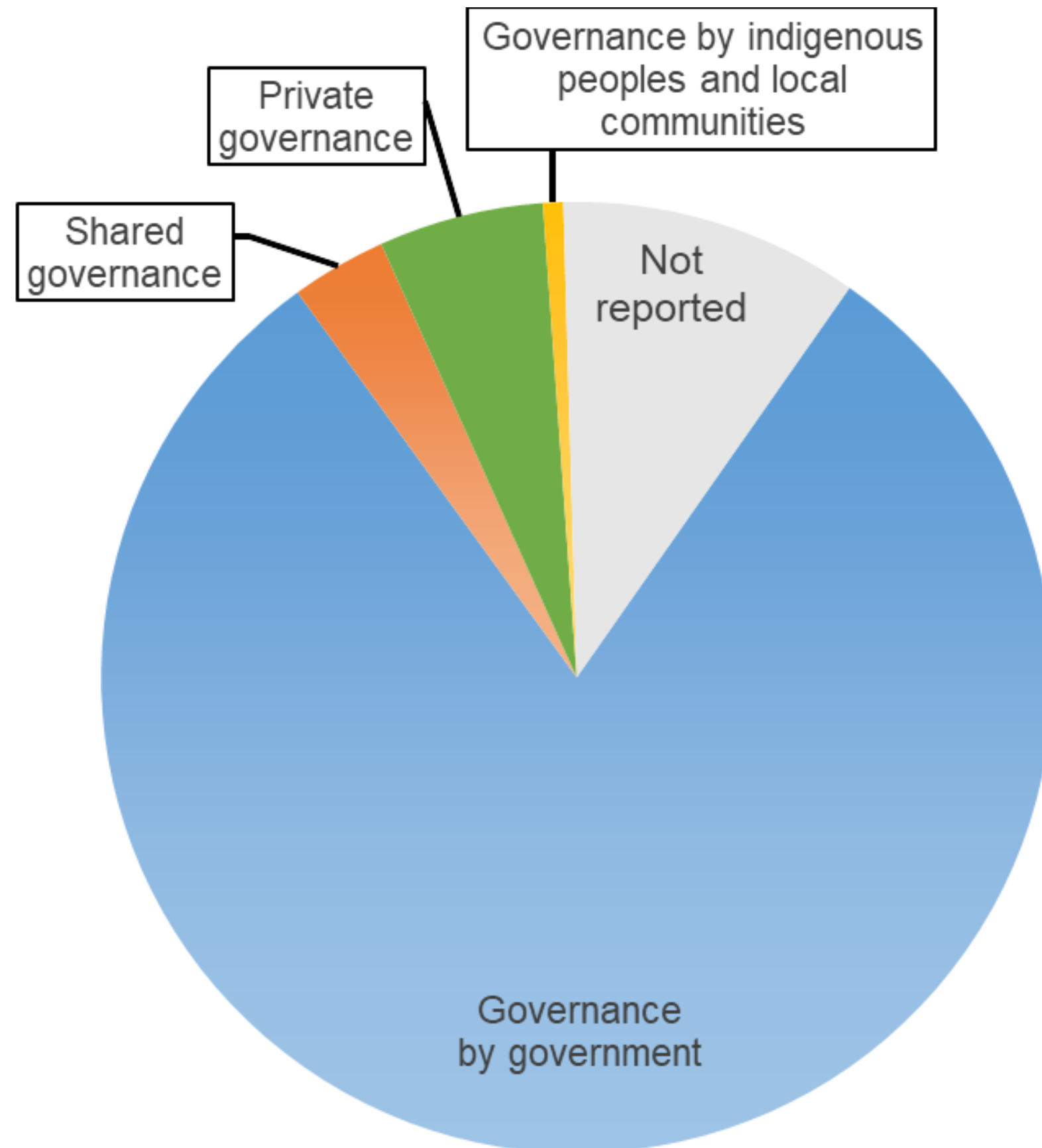
World Database on Protected Areas



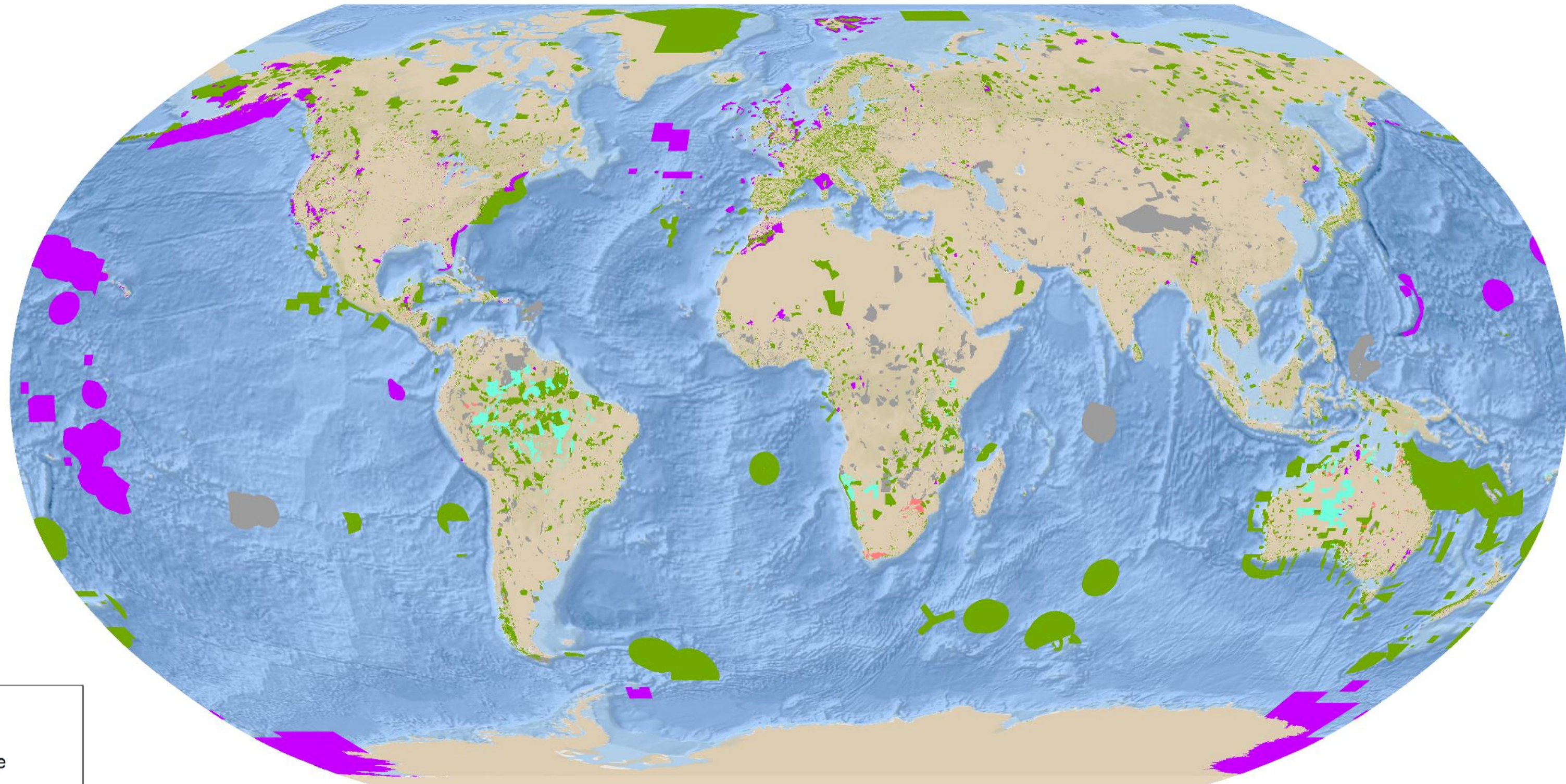
WDPA =



Recognising diversity of governance



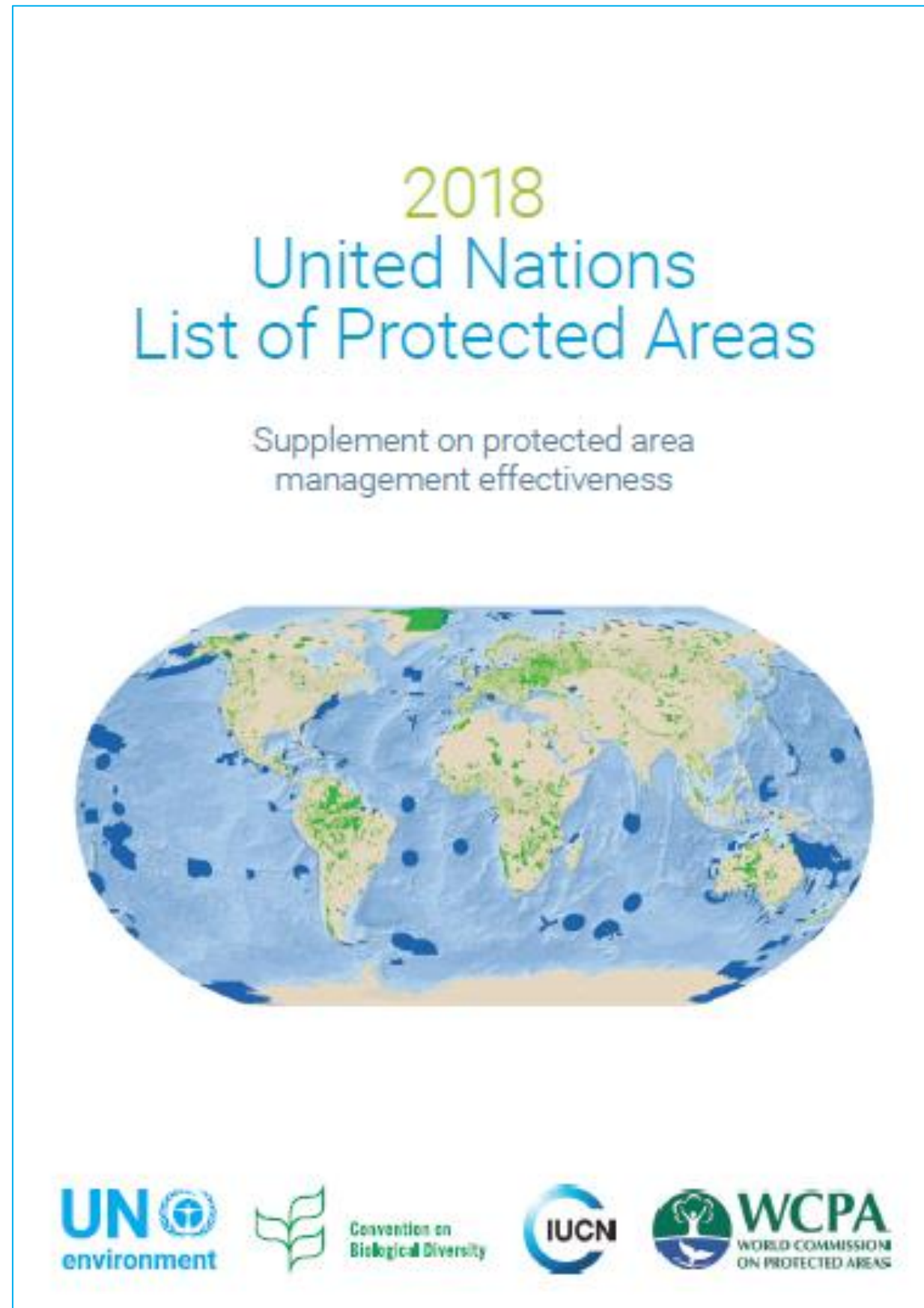
Another view of governance diversity



Legend

- IP/LC governance
- Private governance
- Shared governance
- Government governance
- Governance not reported

Protected Area Management Effectiveness



In 2010, the CBD invited Parties to - *'Continue expand and institutionalize management effectiveness assessments to work towards assessing 60 percent of the total area of protected areas by 2015 using various national and regional tools and report the results into the global database on management effectiveness maintained by the World Conservation Monitoring Centre of the United Nations Environment Programme (UNEP-WCMC)'.*

July 2017 - CBD notification to countries requesting reporting.

169 countries, but not always comprehensive for full network

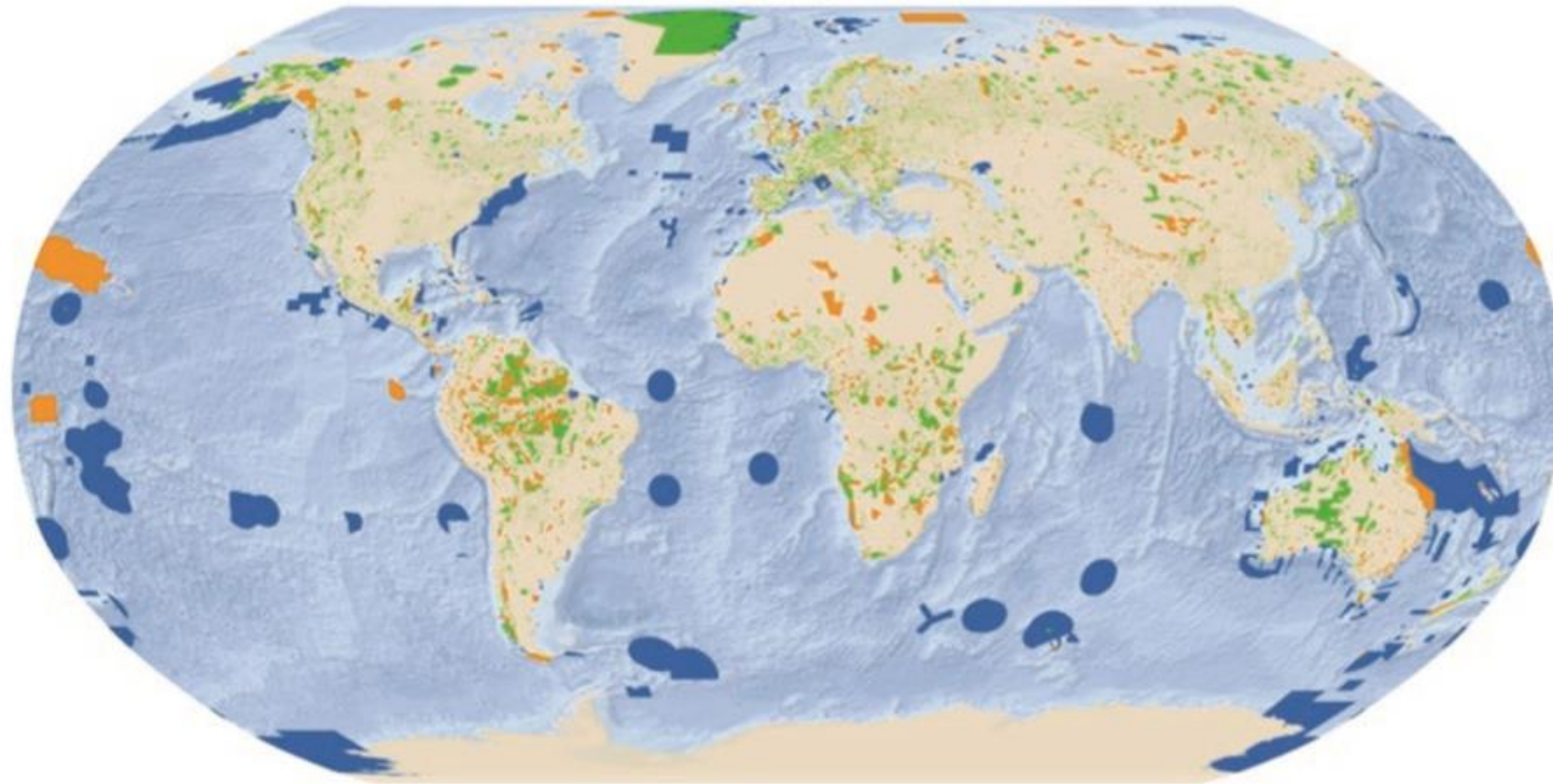
69 different assessments systems reported on


20% of protected area has reported assessment

Some confusion over what was being requested

Protected Area Management Effectiveness

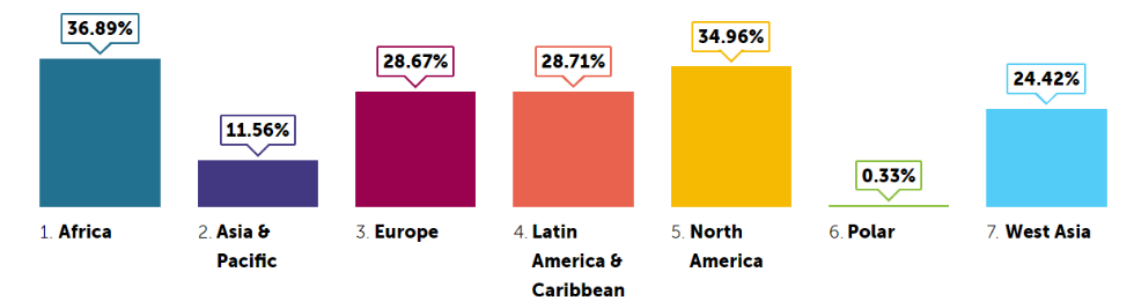
~10% of protected areas in WDPA have management effectiveness information recorded in global PAMEdatabase



 PAME assessed protected areas

Percentage coverage of management effectiveness assessments per region

Percentage coverage of all protected areas per region assessed for management effectiveness using different PAME tools.

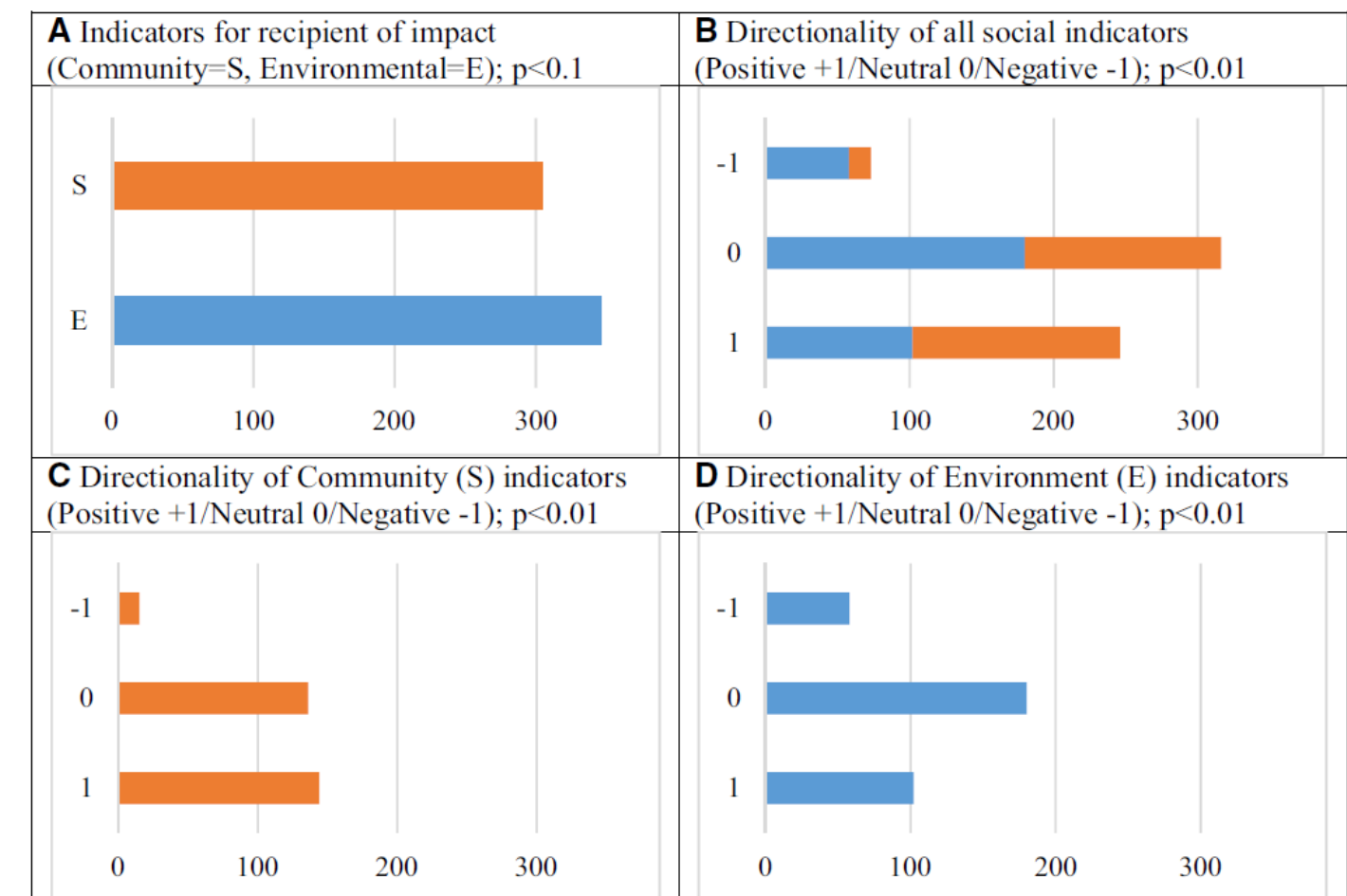


Using the Global PAME Database

- Assessing the social context of indicators used in 39 methodologies, over 2000 indicators reviewed

Number	Methodology	Social indicators	% of total	Total indicators
1.	How is your MPA doing? Management effectiveness evaluation	25	60%	42
2.	Evaluation of conservation potential of protected areas, Central African Republic	8	57%	14
3.	Monitoring and assessment with relevant indicators of protected areas of the Guianas	37	43%	87
4.	WWF-World Bank marine protected area score card	28	41%	68
5.	Visión 20001: Situación Actual del Sistema de Parques Nacionales de Venezuela	16	39%	41
6.	Degree of implementation and the vulnerability of Brazilian federal conservation areas	5	38%	13
7.	Rapid evaluation of management effectiveness in marine protected areas of Mesoamerica	27	38%	72
8.	WWF/agricultural center of tropical investigation and teaching evaluation methodology	24	38%	64
9.	Governance of biodiversity assessment of success factors for biosphere reserve management	9	35%	26
10.	Enhancing our heritage	33	32%	102
11.	IUCN conservation outlook assessments	19	30%	63
12.	Korea state of parks management effectiveness evaluation	15	29%	51
13.	Africa rainforest protected areas study	10	29%	35
14.	US state of parks	46	27%	171
15.	Rapid assessment and prioritization of protected area Management, KwaZulu Natal Province methodology, South Africa	21	26%	80

S- Social
E= Ecological



Ecological Representation

Protected Planet Report 2018

Tracking progress towards global targets for protected areas

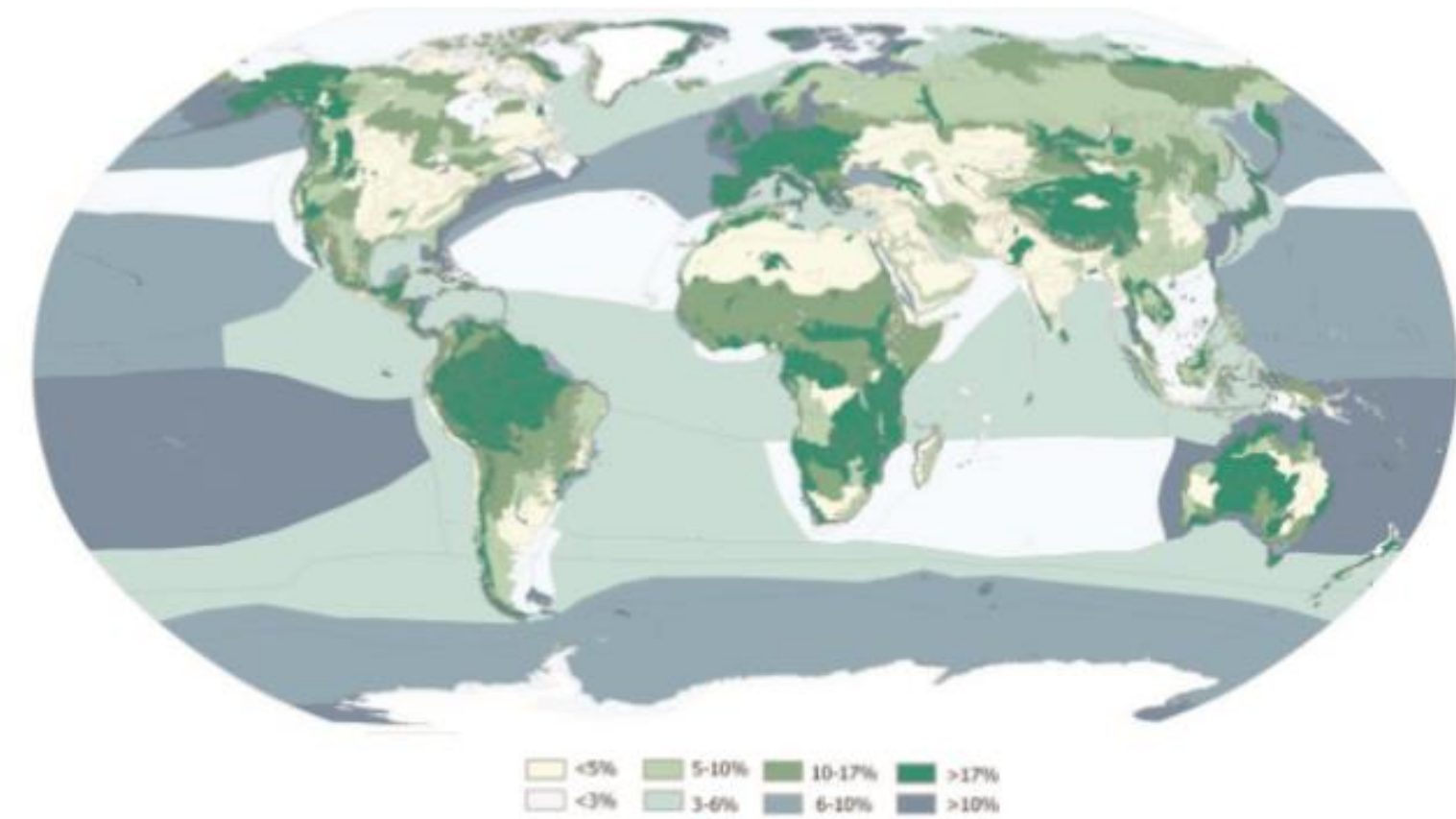


Figure 8. Protected area coverage (in percentage) of the world's terrestrial (green gradient) and marine (blue gradient) ecoregions of the world. Source: UNEP-WCMC and IUCN, 2018a.

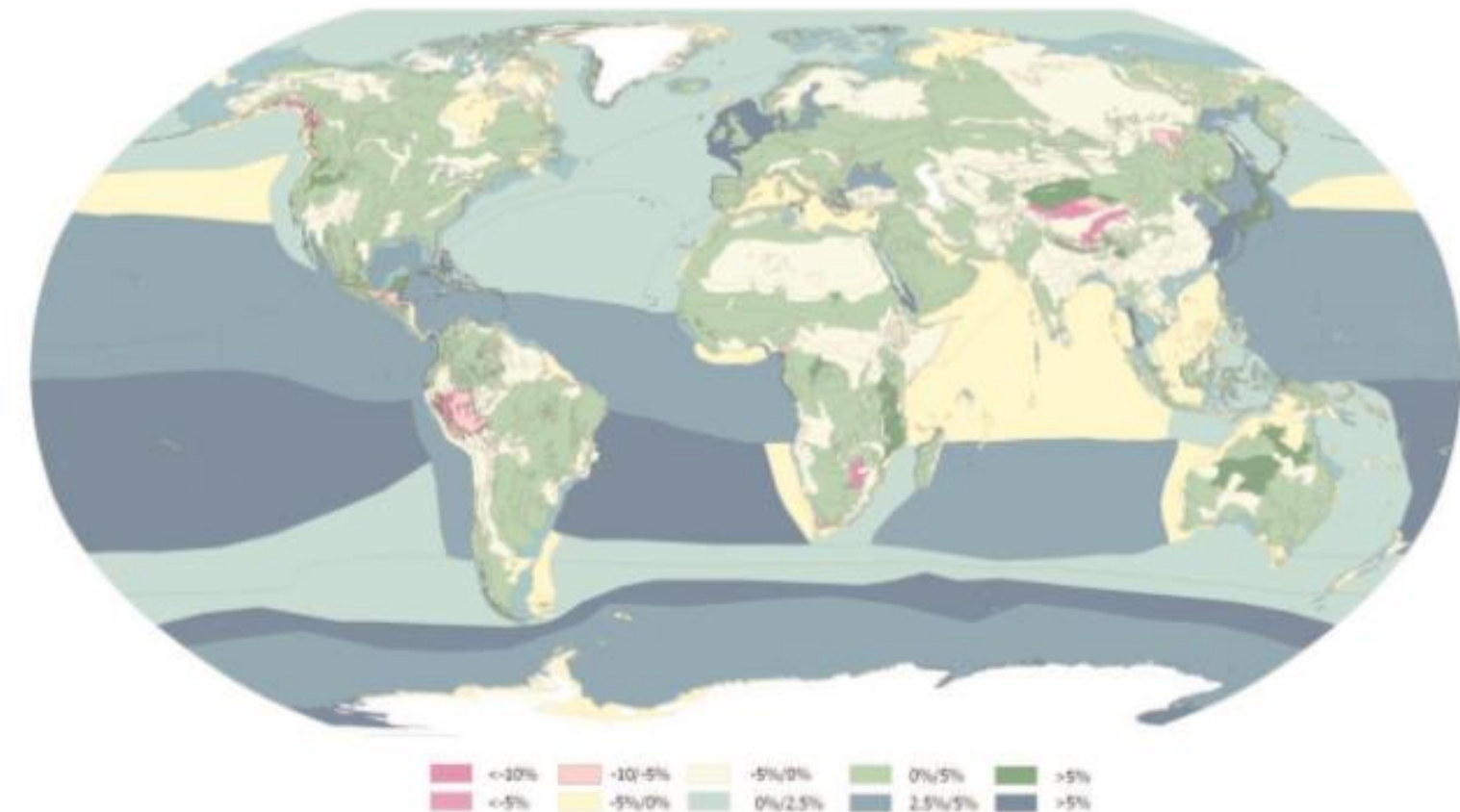


Figure 9. Change in the protected area coverage of the world's terrestrial and marine ecoregions and pelagic provinces between April 2016 and 2018. Source: UNEP-WCMC and IUCN, 2018a.

Well Connected Systems

Protected Planet Report 2018

Tracking progress towards global targets for protected areas

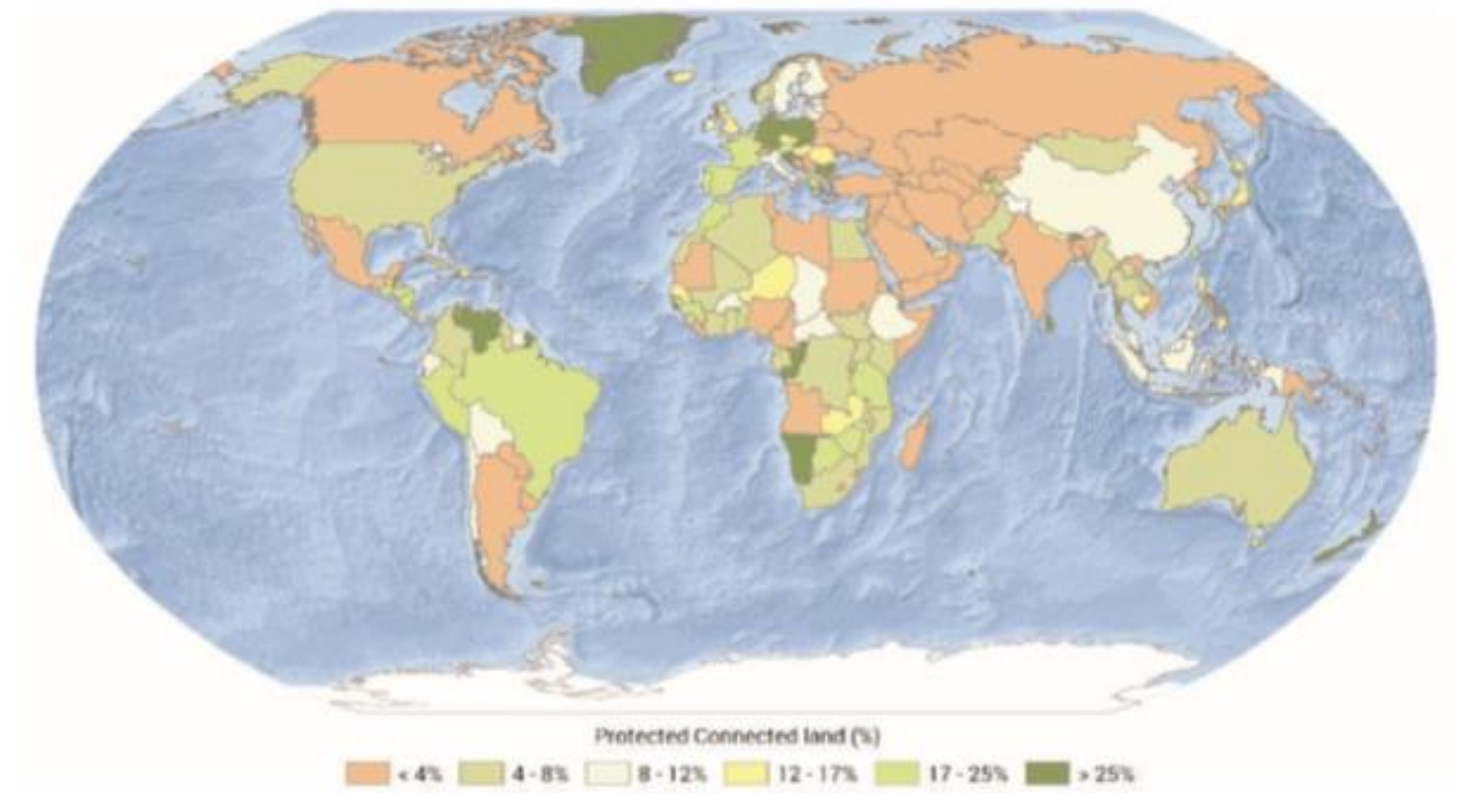


Figure 14. Map of 'Protected Connected land' in the world using the ProtConn indicator, for species with a median dispersal distance of 10 km. Source: Adapted from Saura et al. (2018).¹⁵

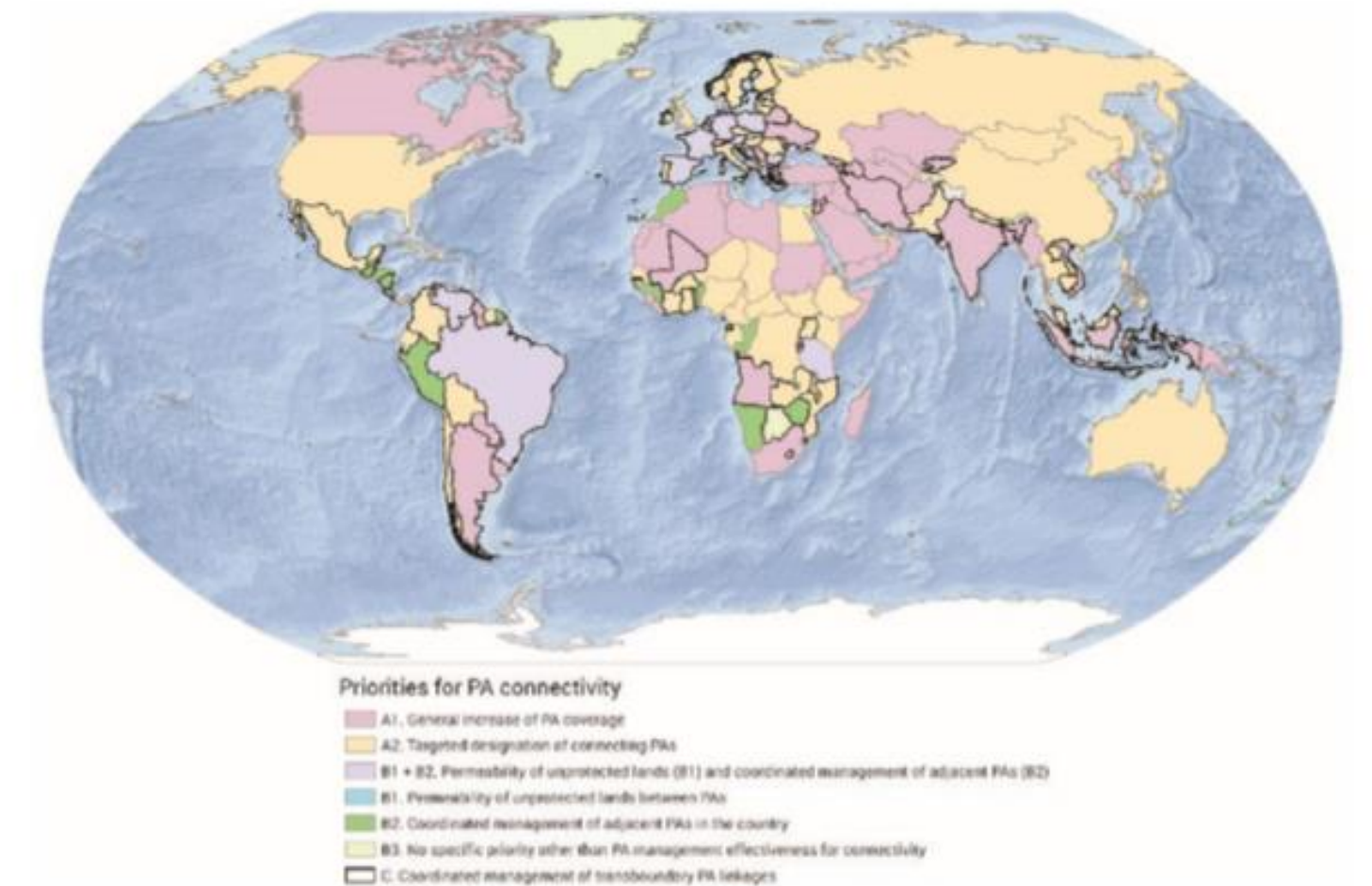
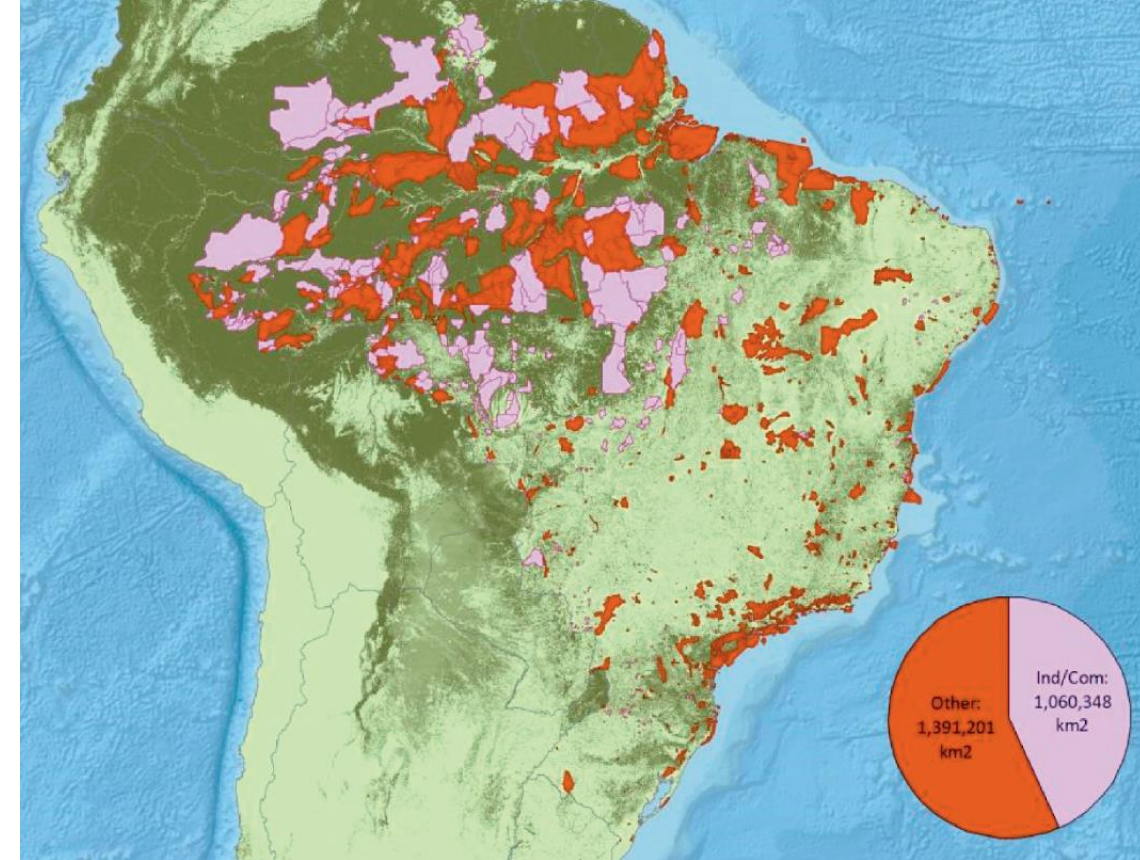


Figure 15. Priority considerations for countries in order to enhance protected area connectivity on land. Source: Adapted from Saura et al. (2018).¹⁶

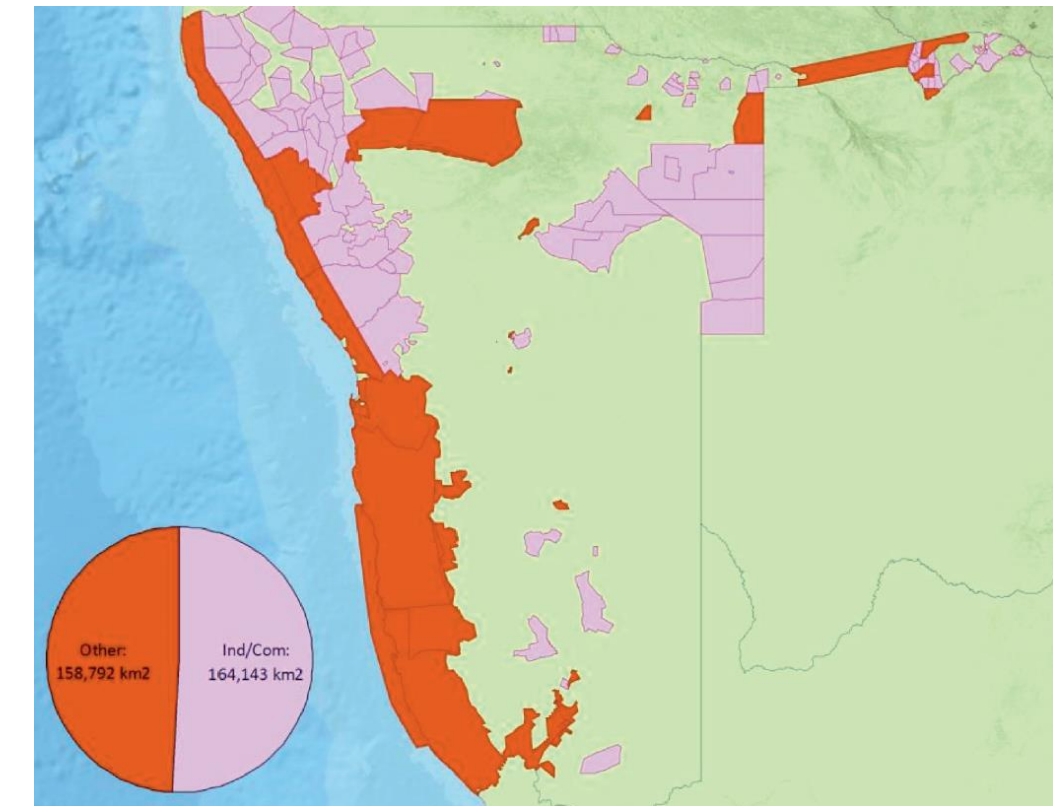
The potential of inclusive, diverse conservation

Protected Areas Coverage

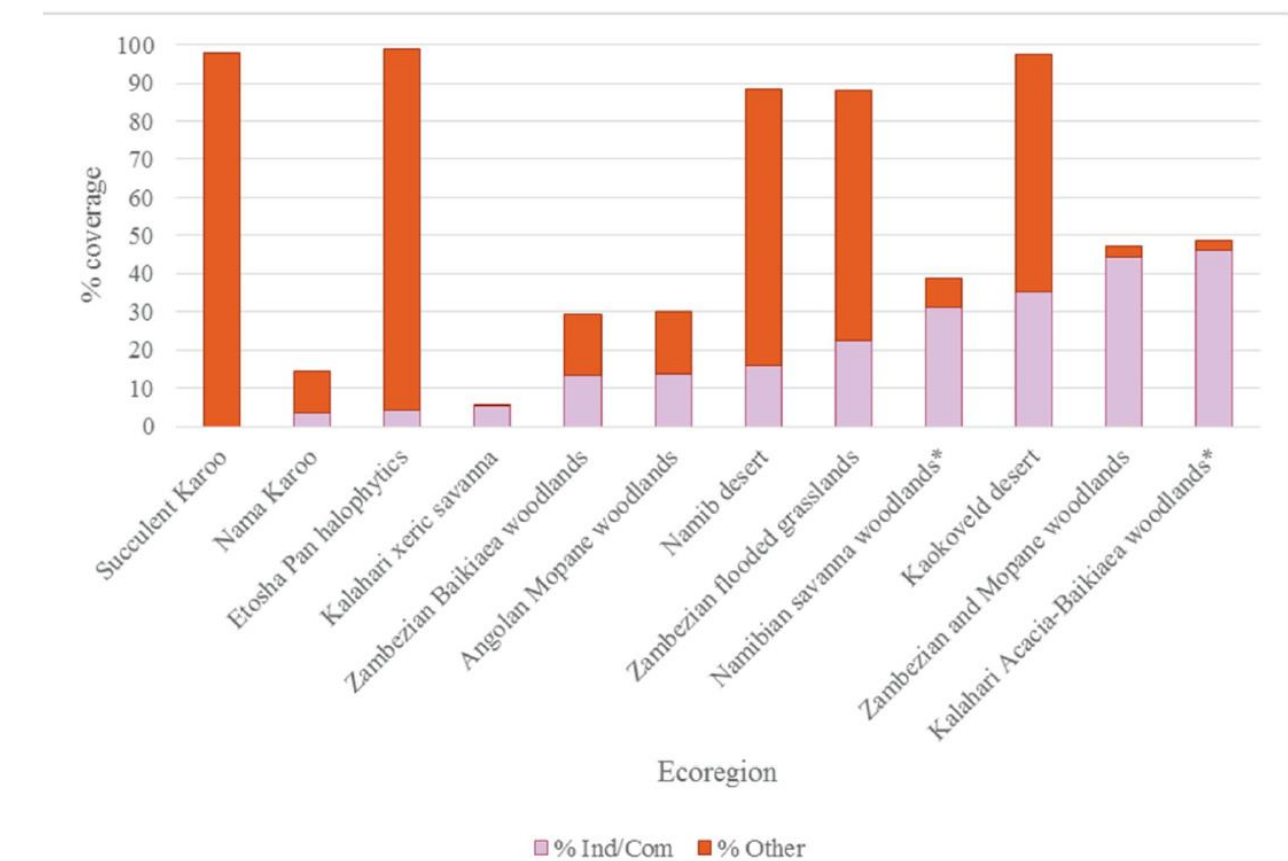
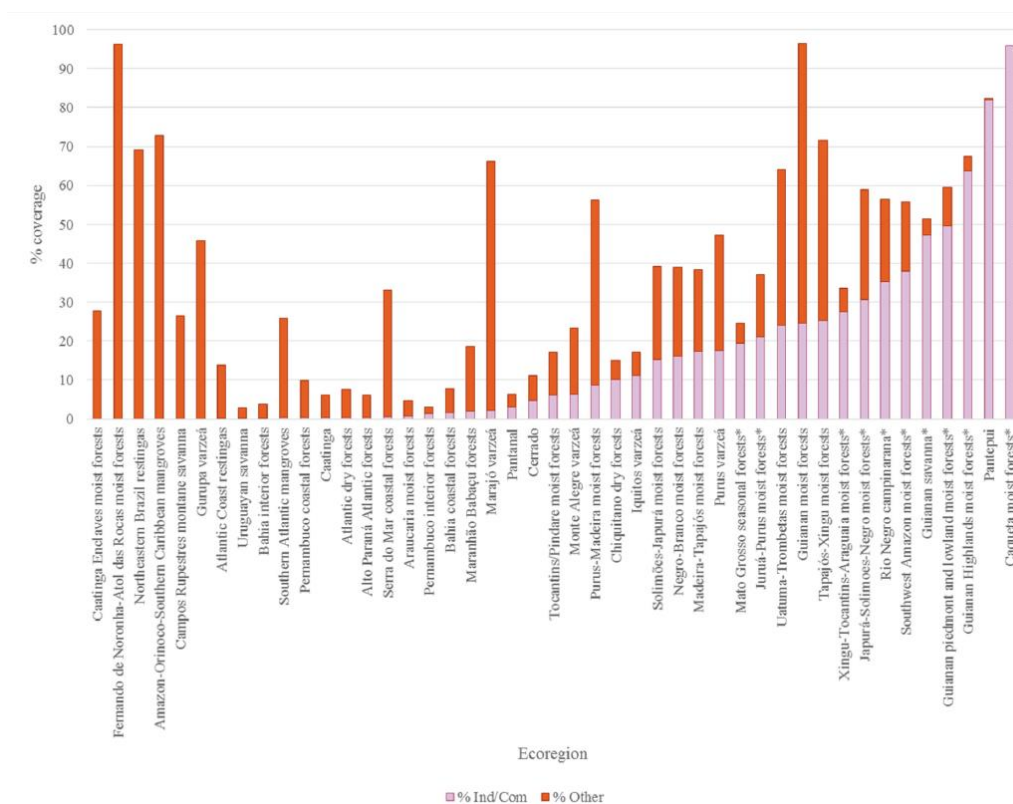
Brazil



Namibia



Protection of Ecoregions



What more can we learn?

#	Indicator	Australia		Brazil		Namibia	
		Ind/Com	Other	Ind/Com	Other	Ind/Com	Other
1	Coverage of national terrestrial area (%)	7	11	12	16	20	18
2	Contribution to PA terrestrial coverage (%)	39	61	43	53	52	48
3	Key Biodiversity Areas (% of national coverage)	3	52	6	49	7	92
4	Coverage of nationally occurring species (%)	82	98	86	94	88	95
5	Coverage of national threatened spp (%)	58	98	71	93	64	96
6	Average PA size (km2)	8235	442	1991	1129	1727	6264
7	Median PA size (km2)	709	1	140	18	924	1330
8	Ecoregion representation (% of national coverage)	56	100	87	96	92	100
9	Proportion of ecoregions protected to 10% (%)	11	47	29	43	52	43
10	Forest Loss (%)	3	12	1	3	64	21

ICCA Registry

WWW.ICCAREGISTRY.ORG

About the ICCA Registry



About the ICCA Registry



The ICCA Registry is a voluntary, peer-reviewed archive for both indigenous peoples and communities and the international conservation community to recognize and protect the multiple values of ICCAs and highlight their contribution to conservation around the world.

[Learn more](#)

Latest case study



Ummun drom ditor alk anet, comestibus adipiscing elit. Praen sed lacina quam. Maecenas at erosque purus. Cras egestas, pharetra justo lobortis porta. Fuscesque orare no other mahe facilis. Fusile at sit ut tris vestibulum aliquet vel sed nisi.

Donec egestas, quam nec teneat aliquam, tristique a tamen nisi, id curabitur. maecenas turpis in elit. Suspendisse condimentum, etiam vel tortum cursus, leo diam fermentum.

Parulku Indigenous Protected Area
Australia

[Discover the case study](#)

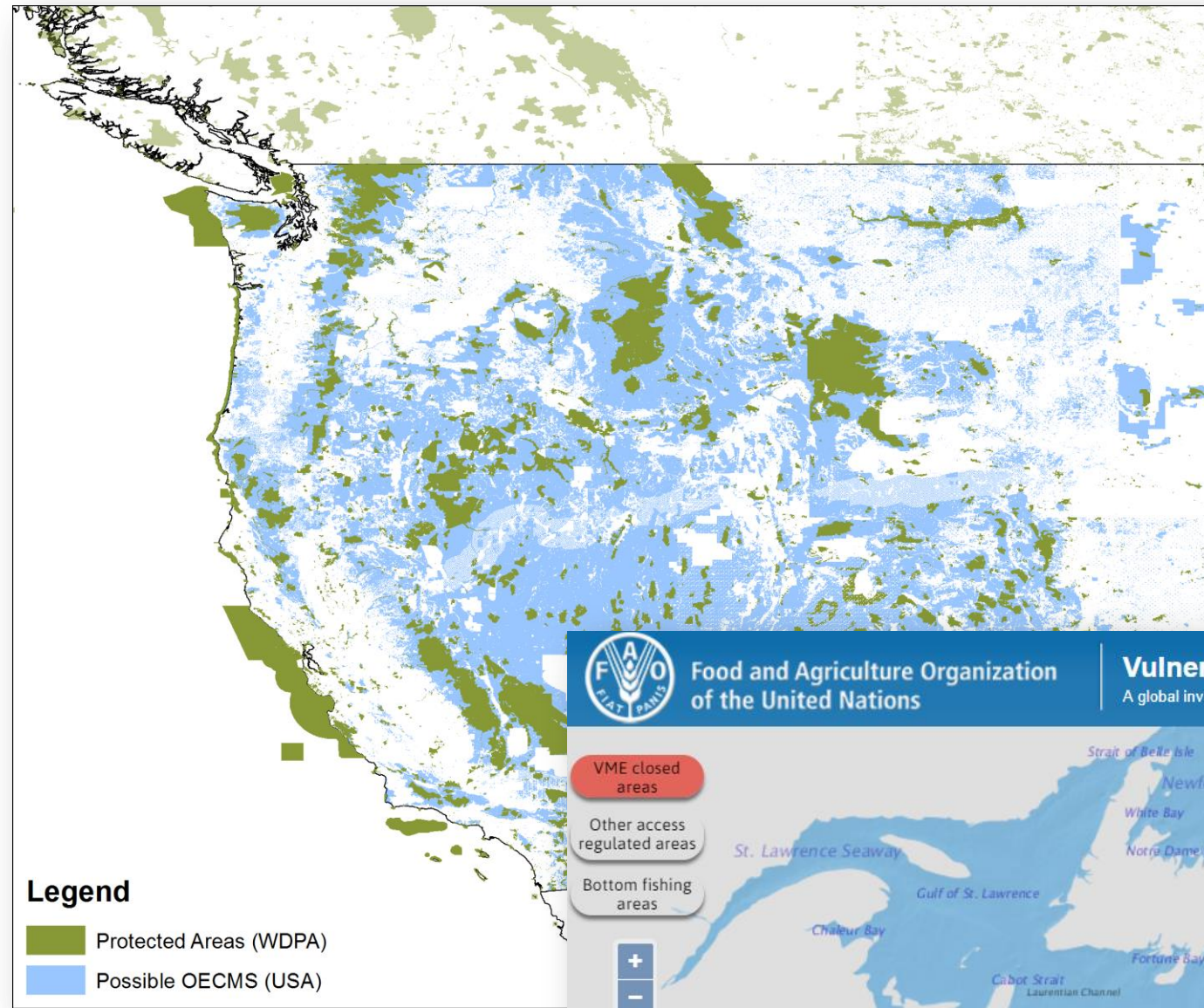
ICCA Toolkit

A toolkit designed to support indigenous peoples and local communities in their conservation practices. Over 80 tools are available in this toolkit, and 24 case studies from around the world provide examples of how communities are already using the tools and approaches in their work.

[Download the ICCA Toolkit](#)



Other effective area based conservation measures



THANK YOU

colleen.corrigan@unep-wcmc.org
[@protectedplanet](#)
www.protectedplanet.net

+44 (0)1223 277314
info@unep-wcmc.org

Facebook: [@unepwcmc](#)
Twitter: [@unepwcmc](#)
Linkedin: [UNEP-WCMC](#)
Youtube: [UNEP-WCMC Communications](#)

