



Convention on
Biological Diversity



Aichi Biodiversity Target 11 Country Dossier: TOGO

With generous support from:



DEUTSCHE ZUSAMMENARBEIT

giz Deutsche Gesellschaft
für Internationale
Zusammenarbeit (GIZ) GmbH



European
Commission



UK Government



WCMC



Global Partnership on
AICHI TARGET 11



GLOSSARY	3
EXECUTIVE SUMMARY	5
<i>Aichi Biodiversity Target 11 Elements: Current status and opportunities for action</i>	5
INTRODUCTION	8
SECTION I: CURRENT STATUS	10
<i>COVERAGE - TERRESTRIAL & MARINE</i>	11
<i>ECOLOGICAL REPRESENTATIVENESS – TERRESTRIAL & MARINE</i>	14
<i>AREAS IMPORTANT FOR BIODIVERSITY</i>	17
<i>AREAS IMPORTANT FOR ECOSYSTEM SERVICES</i>	20
<i>CONNECTIVITY & INTEGRATION</i>	22
<i>GOVERNANCE DIVERSITY</i>	23
<i>PROTECTED AREA MANAGEMENT EFFECTIVENESS</i>	25
SECTION II: EXISTING PROTECTED AREA AND OECD COMMITMENTS	27
<i>PRIORITY ACTIONS FROM 2015-2016 REGIONAL WORKSHOPS</i>	27
<i>NATIONAL BIODIVERSITY STRATEGY AND ACTION PLANS (NBSAPs)</i>	28
<i>APPROVED GEF-5, GEF-6 PROTECTED AREA PROJECTS</i>	29
<i>OTHER ACTIONS/COMMITMENTS</i>	30
ANNEX I	32
<i>FULL LIST OF TERRESTRIAL ECOREGIONS</i>	32
REFERENCES	33



GLOSSARY

AZEs	Alliance for Zero Extinction sites
CEPF	Critical Ecosystem Partnership Fund
EBSA	Ecologically or Biologically Significant Marine Area
EEZ	Exclusive Economic Zone
GCF	Green Climate Fund
GD-PAME	Global Database on Protected Area Management Effectiveness
GEF	Global Environment Facility
IBA	Important Bird and Biodiversity Area
ICCAs	Indigenous and Community Conserved Area Area (may also be referred to as territories and areas conserved by Indigenous peoples and local communities or “territories of life”)
IPLC	Indigenous Peoples and Local Communities
KBA	Key Biodiversity Area
MEOW	Marine Ecosystems of the World
MPA	Marine Protected Area
NBSAP	National Biodiversity Strategy and Action Plan
OECD	Other Effective Area-Based Conservation Measures
PA	Protected Area
PAME	Protected Area Management Effectiveness
PPA	Privately Protected Area
PPOW	Pelagic Provinces of the World
ProtConn	Protected Connected land indicator
SOC	Soil Organic Carbon
TEOW	Terrestrial Ecosystems of the World
WDPA	World Database on Protected Areas
WD-OECD	World Database on Other Effective Area-Based Conservation Measures



4 | Aichi Biodiversity Target 11 Country Dossier: TOGO

Disclaimer

The designations employed and the presentation of material in this dossier do not imply the expression of any opinion whatsoever on the part of the Secretariat of the Convention on Biological Diversity (SCBD) or United Nations Development Programme (UNDP) concerning the legal status of any country, territory, city or area or of its authorities, or concerning the delimitation of its frontiers or boundaries. The information contained in this publication do not necessarily represent those of the SCBD or UNDP.

This country dossier is compiled by the UNDP and SCBD from publicly available information. It is prepared, within the overall work of the Global Partnership on Aichi Biodiversity Target 11, for the purpose of attracting the attention of the Party concerned and other national stakeholders to facilitate the verification, correcting, and updating of country data. The statistics might differ from those reported officially by the country due to differences in methodologies and datasets used to assess protected area coverage and differences in the base maps used to measure terrestrial and marine area of a country or territory. Furthermore, the suggestions from the UNDP and SCBD are based on analyses of global datasets, which may not necessarily be representative of national policy or criteria used at the national level. The analyses are also subject to the limits inherent in global indicators (precision, reliability, underlying assumptions, etc.). Therefore, they provide useful information but cannot replace analyses at a national level nor constitute a future benchmark for national policy or decision-making.

The preparation of this dossier was generously supported by: the Government of the Federal Republic of Germany, *Deutsche Gesellschaft für Internationale Zusammenarbeit (GIZ) GmbH*; the European Commission; the Government of the United Kingdom of Great Britain and Northern Ireland; and the Government of Japan (Japan Biodiversity Fund). The dossier does not necessarily reflect their views.

This publication may be reproduced for educational or non-commercial purposes without special permission from the copyright holders, provided acknowledgement of the source is made. The SCBD and UNDP would appreciate receiving a copy of any publications that use this document as a source.



EXECUTIVE SUMMARY

This document provides information on the coverage of protected areas (PAs) and other effective area-based conservation measures (OECMs), as currently reported in global databases (the World Database on Protected Areas ([WDPA](#)) and World Database on Other Effective Area-Based Conservation Measures ([WD-OECM](#))). It also includes details on the status of the other qualifying elements of Aichi Biodiversity Target 11 based on this data. These statistics might differ from those reported officially by countries due to difference in methodologies and datasets used to assess protected area coverage, differences in the base maps used to measure terrestrial and marine area of a country or territory, or if global datasets differ from the criteria and indicators used at the national level. This dossier also provides a summary of commitments made under Aichi Biodiversity Target 11, and a summary of potential opportunities regarding elements of the target for future planning.

The dossier has been developed in consultation with the UN Environment Programme World Conservation Monitoring Centre (UNEP-WCMC), which manages the WDPA, WD-OECM and Global Database on Protected Area Management Effectiveness ([GD-PAME](#)). Parties to the CBD are requested to contact protectedareas@unep-wcmc.org with any updates to the information in these databases.

Aichi Biodiversity Target 11 Elements: Current status and opportunities for action

Coverage - Terrestrial & Marine

- **Status:** as of May 2021, terrestrial coverage in Togo is 16,080.7 km² (28.0%) and marine coverage is 31.0 km² (0.2%).
- **Opportunities for action:** opportunities for the near-term include updating the WDPA with any unreported PAs, and the recognizing and reporting OECMs to the WD-OECM. In the future, focus on relatively intact areas, while addressing the elements in the following sections, could be considered if planning new PAs or OECMs.

Ecological Representativeness— Terrestrial & Marine

- **Status:** Togo contains 3 terrestrial ecoregions, 1 marine ecoregion, and 1 pelagic province: the mean coverage by reported PAs and OECMs is 25.2% (terrestrial), 0.0% (marine), and 0.0% (pelagic); 1 marine ecoregion and 1 pelagic province have no coverage by reported PAs and OECMs.
- **Opportunities for action:** there is opportunity for Togo to increase protection in terrestrial and marine ecoregions and pelagic provinces that have lower levels of coverage by PAs or OECMs. Ecoregions which currently have no coverage by PAs or OECMs are key areas for action.



6 | Aichi Biodiversity Target 11 Country Dossier: TOGO

Areas Important for Biodiversity

- **Status:** Togo has 4 Key Biodiversity Areas (KBAs): the mean protected coverage of KBAs by reported PAs and OECMs is 87.1%; all KBAs have at least partial coverage by reported PAs and OECMs.
- **Opportunities for action:** there is opportunity for Togo to increase protection of KBAs that have lower levels of coverage by PAs and OECMs; focus on effective management for those that already have higher coverage.

Areas Important for Ecosystem Services

- **Status:** coverage of areas important for ecosystem services: In Togo, 25.3% of aboveground biomass carbon, 23.7% of belowground biomass carbon, 28.1% of soil organic carbon, 0.1% of carbon stored in marine sediments is covered by PAs and OECMs.
- **Opportunities for action:** for carbon, there is opportunity for Togo to increase PA and OECM coverage in both marine and terrestrial areas with high carbon stocks. Protecting areas with high carbon stocks secures the benefits of carbon sequestration in the area.
- For water, there is opportunity to increase the area of the water catchment under protection by PAs and OECMs, or in cases where there is high levels of protection, focus on effective management for these areas. Protecting the current area of forested land and potentially reforesting would have benefits for improving water security.

Connectivity and Integration

- **Status:** coverage of protected-connected lands is 15.4%.
- **Opportunities for action:** there is opportunity to focus on PA and OECM management for enhancing and maintaining connectivity. Improving connectivity increases the effectiveness of PAs and OECMs and reduces the impacts of fragmentation.
- As well, a range of suggested steps for enhancing and supporting integration are included in the voluntary guidance on the integration of PAs and OECMs into the wider land- and seascapes and mainstreaming across sectors to contribute, inter alia, to the SDGs (Annex I of COP Decision 14/8).

Governance Diversity

- **Status:** the most common governance type(s) for reported PAs in Togo is: 92.0% under Government (90.8% Federal or national ministry or agency; 1.1% Government-delegated management).
- **Opportunities for action:** explore opportunities for governance types that have lower representation, for Togo this could relate to shared governance, etc.



7 | Aichi Biodiversity Target 11 Country Dossier: TOGO

- There is also opportunity for Togo to complete governance and equity assessments, to establish baselines and identify relevant actions for improvement. As well, a range of suggested actions are included in the voluntary guidance on effective governance models for management of protected areas, including equity (Annex II of COP Decision 14/8).

Protected Area Management Effectiveness

- **Status:** 22.7% of terrestrial PAs and 0.0% of marine PAs have completed Protected Area Management Effectiveness (PAME) assessments reported.
- **Opportunities for action:** the 60% target for completed management effectiveness assessments (per COP Decision X/31) **has not** been met for terrestrial PAs and **has not** been met for marine PAs. Therefore, there is opportunity to increase protected area management effectiveness (PAME) evaluations for both terrestrial and marine PAs to achieve the target.
- There is also opportunity to implement the results of completed PAME evaluations, to improve the quality of management for existing PAs and OECMs (e.g. through adaptive management and information sharing, increasing the number of sites reporting 'sound management') and to increase reporting of biodiversity outcomes in PAs and OECMs.



INTRODUCTION

The Strategic Plan for Biodiversity 2011-2020 was adopted at the tenth meeting of the Conference of the Parties (COP) to the Convention on Biological Diversity (CBD) held in Nagoya, Aichi Prefecture, Japan from 18-29 October 2010. The vision of the Strategic Plan is one of “Living in harmony with nature” where *“By 2050, biodiversity is valued, conserved, restored and wisely used, maintaining ecosystem services, sustaining a healthy planet and delivering benefits essential for all people”* (CBD, 2010). In addition to this vision, the Strategic Plan is composed of 20 targets, under five strategic goals. Aichi Biodiversity Target 11 states that *“By 2020, at least 17 per cent of terrestrial and inland water, and 10 per cent of coastal and marine areas, especially areas of particular importance for biodiversity and ecosystem services, are conserved through effectively and equitably managed, ecologically representative and well-connected systems of protected areas and other effective area-based conservation measures, and integrated into the wider landscapes and seascapes.”*

With the conclusion of the Aichi Biodiversity Targets in 2020, Target 11 on area-based conservation has seen success in the expansion of the global network of protected areas (PA) and other effective area-based conservation measures (OECMs). The negotiation of the post-2020 Global Biodiversity Framework (GBF) and its future targets provide an essential opportunity to further improve the coverage of PAs and OECMs, to improve other aspects of area-based conservation, to accelerate progress on biodiversity conservation more broadly, while also addressing climate change, and the Sustainable Development Goals. This next set of global biodiversity targets are to be adopted at the fifteenth meeting of the Conference of the Parties to the Convention on Biological Diversity. These new targets must aim to build upon lessons learned from the last decade of progress to deliver transformative change for the benefit of nature and people, to realize the 2050 Vision for biodiversity.

The United Nations Development Programme (UNDP) and the Secretariat of the Convention on Biological Diversity have developed the Aichi Biodiversity Target 11 Country Dossiers, which provide countries with an overview of the status of Target 11 elements, opportunities for action, and a summary of commitments made by Parties over the last decade. Each dossier can support countries in assessing their progress on key elements of Aichi Biodiversity Target 11 and identifying opportunities to prioritize new protected areas and OECMs.

This dossier provides an overview of area-based conservation in Togo. Section I of the dossier presents data on the current status of Togo’s PAs and OECMs. The data presented in Section I relates to each element of Target 11. Section I also presents the PA and OECM coverage for two critical ecosystem services: water security and carbon stocks. In addition, the dossier presents potential opportunities for action for Togo, in relation to each Target 11 element. The analyses present options for improving Togo’s area-based conservation network to achieve enhanced protection and benefits for livelihoods and climate change. Section II presents details on Togo’s existing PA and OECMs commitments as a summary of existing efforts towards achieving Target 11. This gives focus not only to national policy and actions but also voluntary commitments to the UN. Furthermore, where data is

9 | Aichi Biodiversity Target 11 Country Dossier: TOGO

available, this dossier provides information on potential OECMs, Indigenous and Community Conserved Areas (ICCAs; also often referred to as territories and areas conserved by Indigenous peoples and local communities or “territories of life”) and Privately Protected Areas (PPAs) and the potential contribution they will have in achieving the post-2020 targets.

The information on PAs and OECMs presented here is derived from the World Database on Protected Areas (WDPA) and World Database on Other Effective Area-Based Conservation Measures (WD-OECM). These databases are joint products of UNEP and IUCN, managed by UNEP-WCMC, and can be viewed and downloaded at www.protectedplanet.net. Parties are encouraged to provide data on their PAs and OECMs to UNEP-WCMC for incorporation into the databases (see e.g. Decisions 10/31 and 14/8). The significant efforts of Parties in updating their data in the build up to the publication of the Protected Planet Report 2020 (UNEP-WCMC and IUCN, 2021) were greatly appreciated. UNEP-WCMC welcomes further updates, following the data standards described here, and these should be directed to protectedareas@unep-wcmc.org. The statistics presented in this dossier are derived from the May 2021 WDPA and WD-OECM releases, unless explicitly stated otherwise. Readers should consult www.protectedplanet.net for the latest coverage statistics (updated monthly).

Some data from the WDPA and WD-OECM are not made publicly available at the request of the data-provider. This affects some statistics, maps, and figures presented in this dossier. Statistics provided by UNEP-WCMC (terrestrial and marine coverage) are based upon the full dataset, including restricted data. All other statistics, maps, and figures are based upon the subset of the data that is publicly available.

Where data is less readily available, such as for potential OECMs, ICCAs and PPAs, data has also been compiled from published reports and scientific literature to provide greater awareness of these less commonly recorded aspects. These data are provided to highlight the need for comprehensive reporting on these areas to the WDPA and/or WD-OECM. Parties are invited to work with indigenous peoples, local communities and private actors to submit data under the governance of these actors, with their consent, to the WDPA and/or WD-OECM.

Overall, PAs and OECMs are essential instruments for biodiversity conservation and to sustain essential ecosystem services that support human well-being and sustainable development, including food, medicine, and water security, as well as climate change mitigation and adaptation and disaster risk reduction. The data in this dossier, therefore, aims to celebrate the current contributions of PAs and OECMs, whilst the gaps presented hope to encourage greater progress, not just for the benefit of biodiversity and the post-2020 GBF, but also to recognize the essential role of PAs and OECMs to the Sustainable Development Goals and for addressing the climate crisis.



SECTION I: CURRENT STATUS

Aichi Biodiversity Target 11 refers to both protected areas (PAs) and other effective area-based conservation measures (OECMs). This section provides the current status for all elements of Aichi Biodiversity Target 11 where indicators with global data are available. Statistics for all elements are presented using data on both PAs and OECMs (where this data is available and reported in global databases like the WDPA and WD-OECM). It is recognized that statistics reported in the WPDA and WD-OECM might differ from those reported officially by countries due to differences in methodologies and datasets used to assess protected area coverage and differences in the base maps used to measure terrestrial and marine area of a country or territory. Details on UNEP-WCMC's methods for calculating PA and OECM coverage area available [here](#). The global indicators adopted here for presenting the status of other elements of Target 11 may also differ from those in use nationally. Where available, results from national reporting are also included.



COVERAGE - TERRESTRIAL & MARINE

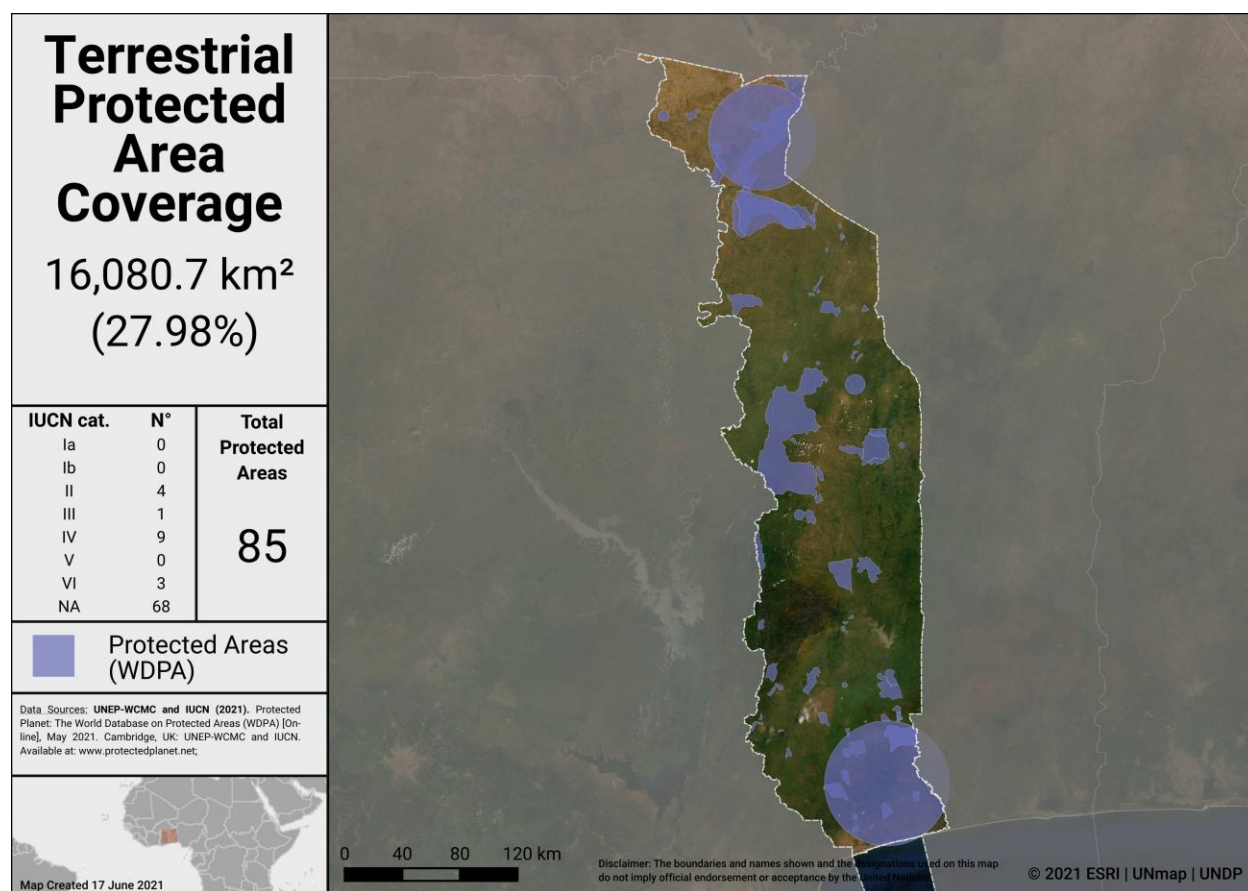
As of May 2021, Togo has **87** protected areas reported in the World Database on Protected Areas (WDPA). 2 UNESCO-MAB Biosphere Reserves are not included in the following statistics (see details on UNWP-WCMCs methods for calculating PA and OECM coverage [here](#)).

As of May 2021, Togo has **0** OECMs reported in the world database on OECMs (WD-OECM).

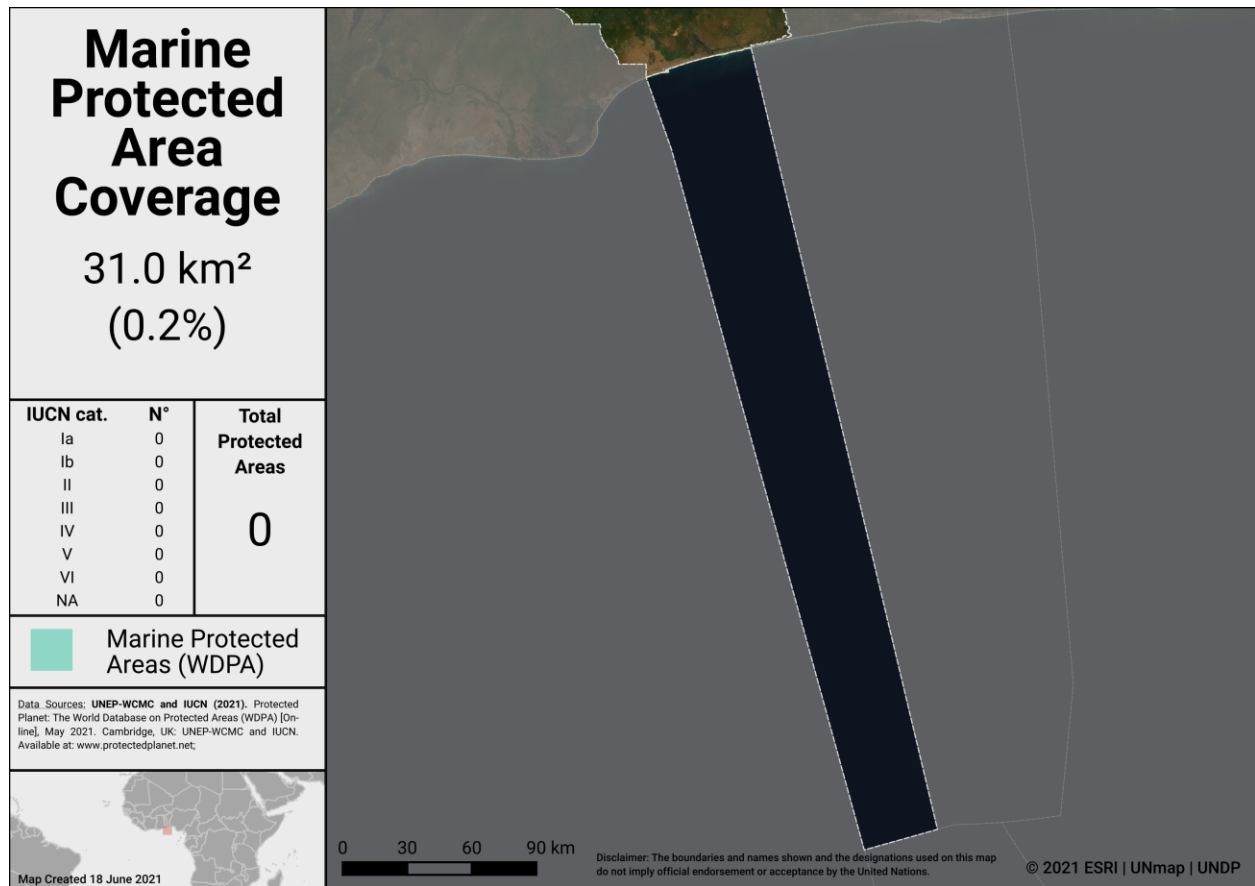
Current coverage for Togo:

- 28.0% terrestrial (85 protected areas, 16,080.7 km²)
- 0.2% marine (0 protected areas, 31.0 km²)

*The national coverage of protected areas created by the State is about 14% but adding community forests, Ramsar sites, and biosphere reserves, it increases to **27.98%**.*



Terrestrial Protected Areas in Togo



Marine Protected Areas in Togo

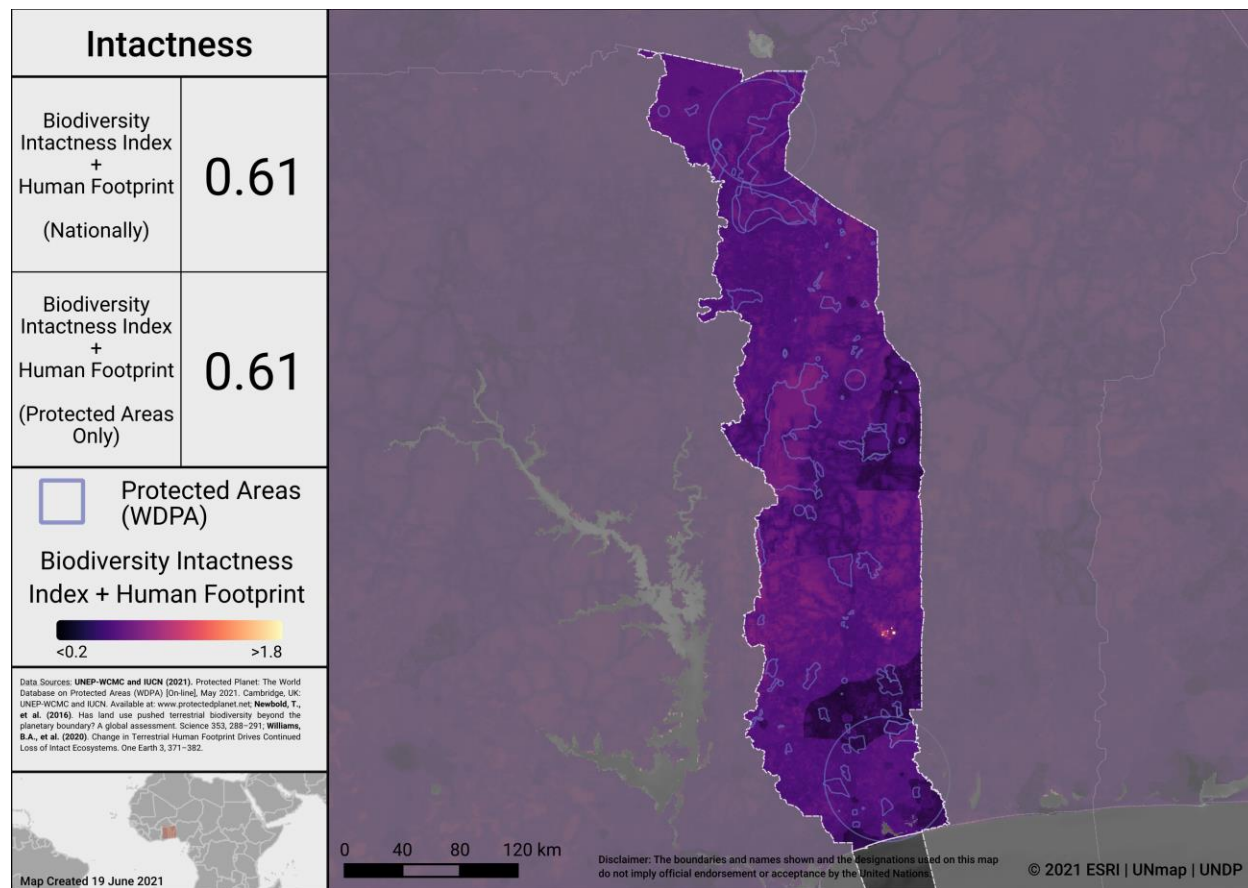
Potential OECMs

There are currently no potential OECM examples for Togo.

Opportunities for action

Opportunities for the near-term include updating the WDPA with any unreported PAs, and the recognizing and reporting OECMs to the WD-OECM. In the future, as Togo considers where to add new PAs and OECMs, the map below identifies areas in Togo where intact terrestrial areas are not currently protected. Focus on relatively intact areas, while addressing the elements in the following sections, could be considered when planning new PAs or OECMs.

13 | Aichi Biodiversity Target 11 Country Dossier: TOGO



Intactness in Togo

To explore more on intactness visit the UN Biodiversity Lab: map.unbiodiversitylab.org.

ECOLOGICAL REPRESENTATIVENESS – TERRESTRIAL & MARINE

Ecological representativeness is assessed based on the PAs and OECMs coverage of broad-scale biogeographic units. Globally, ecoregions have been described for terrestrial areas (Dinerstein et al, 2017), marine coastal and shelf ecosystems (to a depth of 200m; Spalding et al 2007) and surface pelagic waters (Spalding et al 2012).

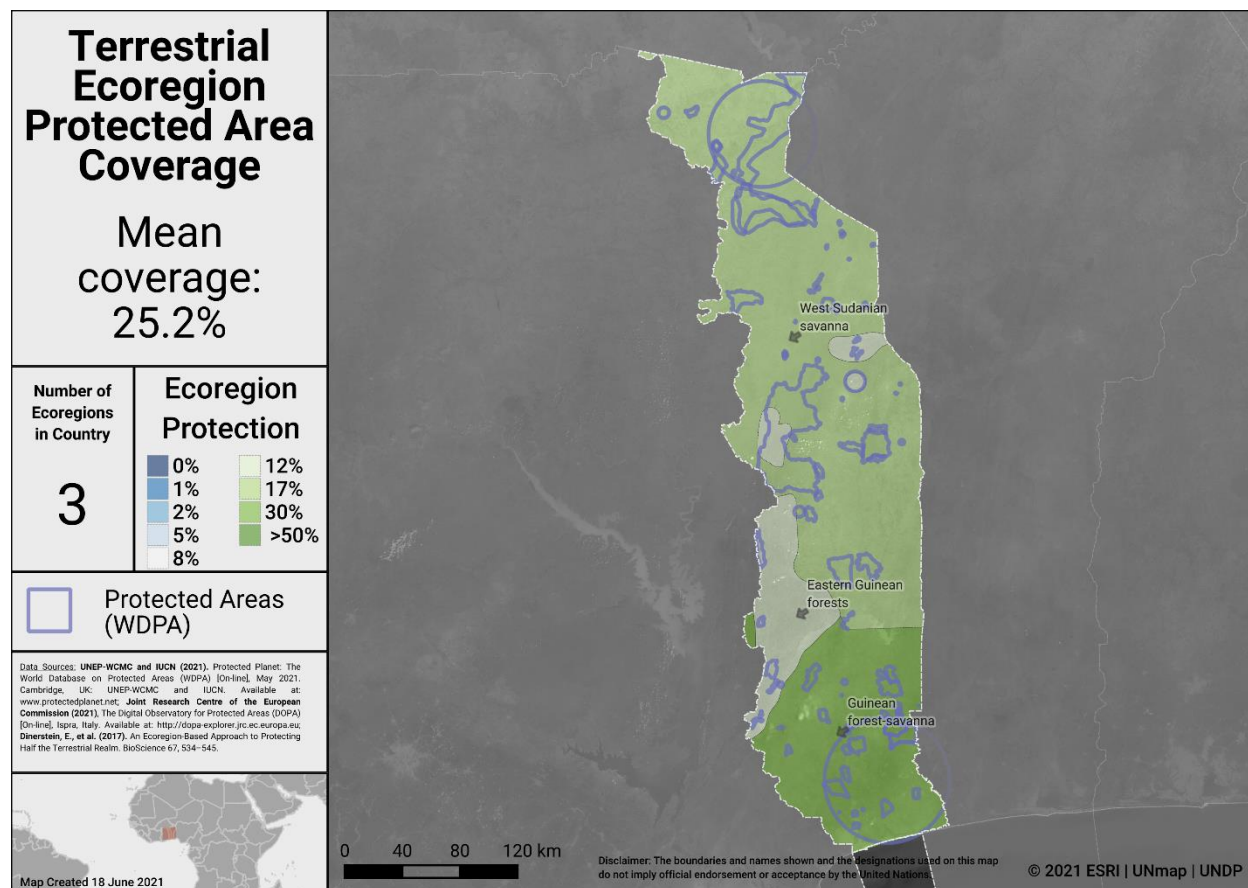
Togo has 3 **terrestrial** ecoregions. Out of these:

- All 3 ecoregions have at least some coverage from PAs and OECMs.
- 2 ecoregions have at least 17% protected within the country.
- The average coverage of terrestrial ecoregions is 25.2%.

Togo has 1 **marine** ecoregion and 1 **pelagic province**:

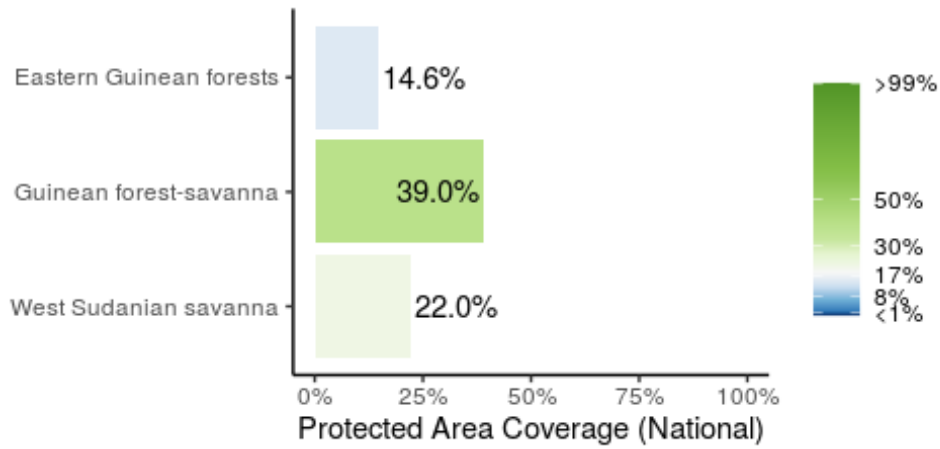
- Coverage from reported PAs and OECMs is 0.0% (marine ecoregion) and 0.0% (pelagic province).

A full list of terrestrial ecoregions in Togo is available in Annex I.

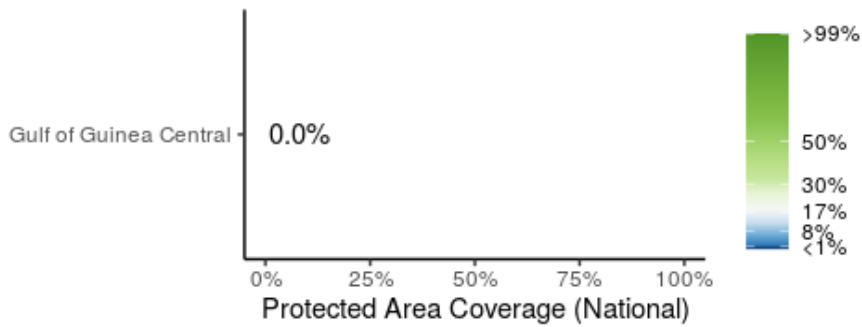


Terrestrial ecoregions in Togo

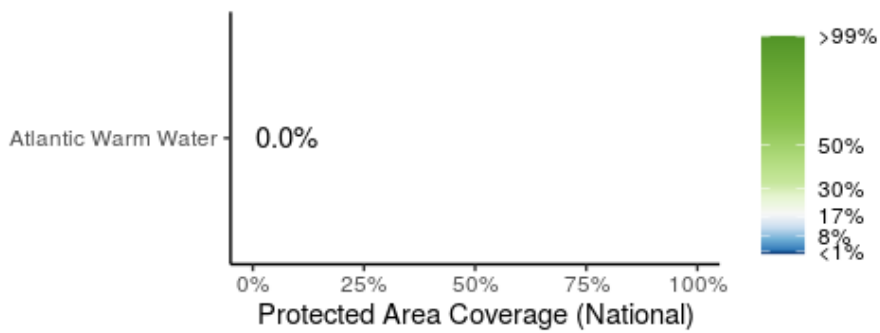
15 | Aichi Biodiversity Target 11 Country Dossier: TOGO



Terrestrial ecoregions of the World (TEOW) in Togo

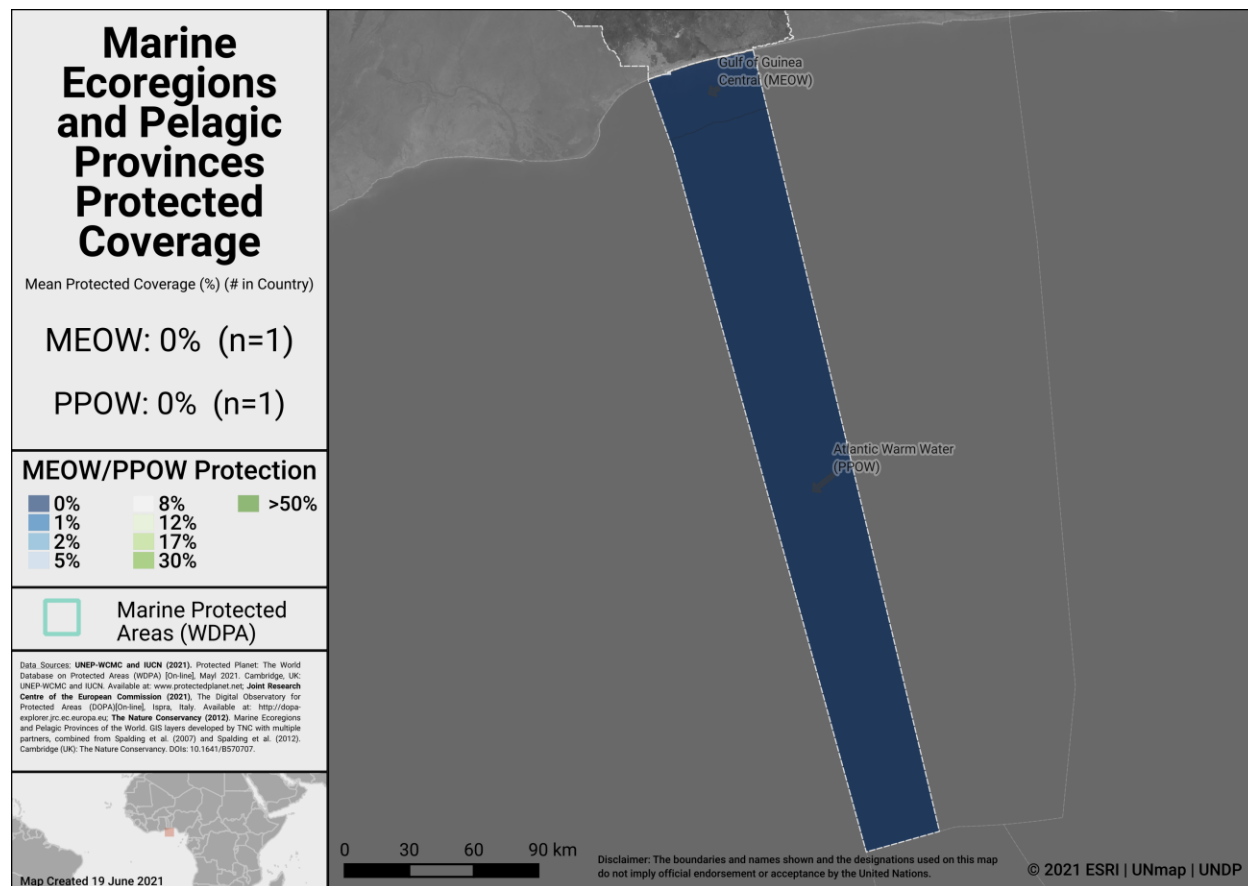


Marine Ecoregions of the World (MEOW) in Togo



Pelagic Provinces of the World (PPOW) in Togo





Marine ecoregions and pelagic provinces

Opportunities for action

There is opportunity for Togo to increase protection in terrestrial and marine ecoregions and pelagic provinces that have lower levels of coverage by PAs or OECMs. Ecoregions which currently have no coverage by PAs or OECMs are key areas for action.

AREAS IMPORTANT FOR BIODIVERSITY

Key Biodiversity Areas (KBAs)

Protected area and OECM coverage of Key Biodiversity Areas (KBAs) provide one proxy for assessing the conservation of areas important for biodiversity at national, regional and global scales. KBAs are sites that make significant contributions to the global persistence of biodiversity (IUCN, 2016). The KBA concept builds on four decades of efforts to identify important sites for biodiversity, including Important Bird and Biodiversity Areas, Alliance for Zero Extinction sites, and KBAs identified through Hotspot ecosystem profiles supported by the Critical Ecosystem Partnership Fund. Incorporating these sites, the dataset of internationally significant KBAs includes Global KBAs (sites shown to meet one or more of 11 criteria in the Global Standard for the Identification of KBAs, clustered into five categories: threatened biodiversity; geographically restricted biodiversity; ecological integrity; biological processes; and irreplaceability), Regional KBAs (sites identified using pre-existing criteria and thresholds, that do not meet the Global KBA criteria based on existing information), and KBAs whose Global/Regional status is Not yet determined, but which will be assessed against the global KBA criteria within 8-12 years. Regional KBAs are often of critical international policy relevance (e.g., in EU legislation and under the Ramsar Convention on Wetlands), and many are likely to qualify as Global KBAs in future once assessed for their biodiversity importance for other taxonomic groups and ecosystems. To date, nearly 16,000 KBAs have identified globally, and information on each of these is presented in the World Database of Key Biodiversity Areas: www.keybiodiversityareas.org.

Togo has **4** Key Biodiversity Areas (KBAs).

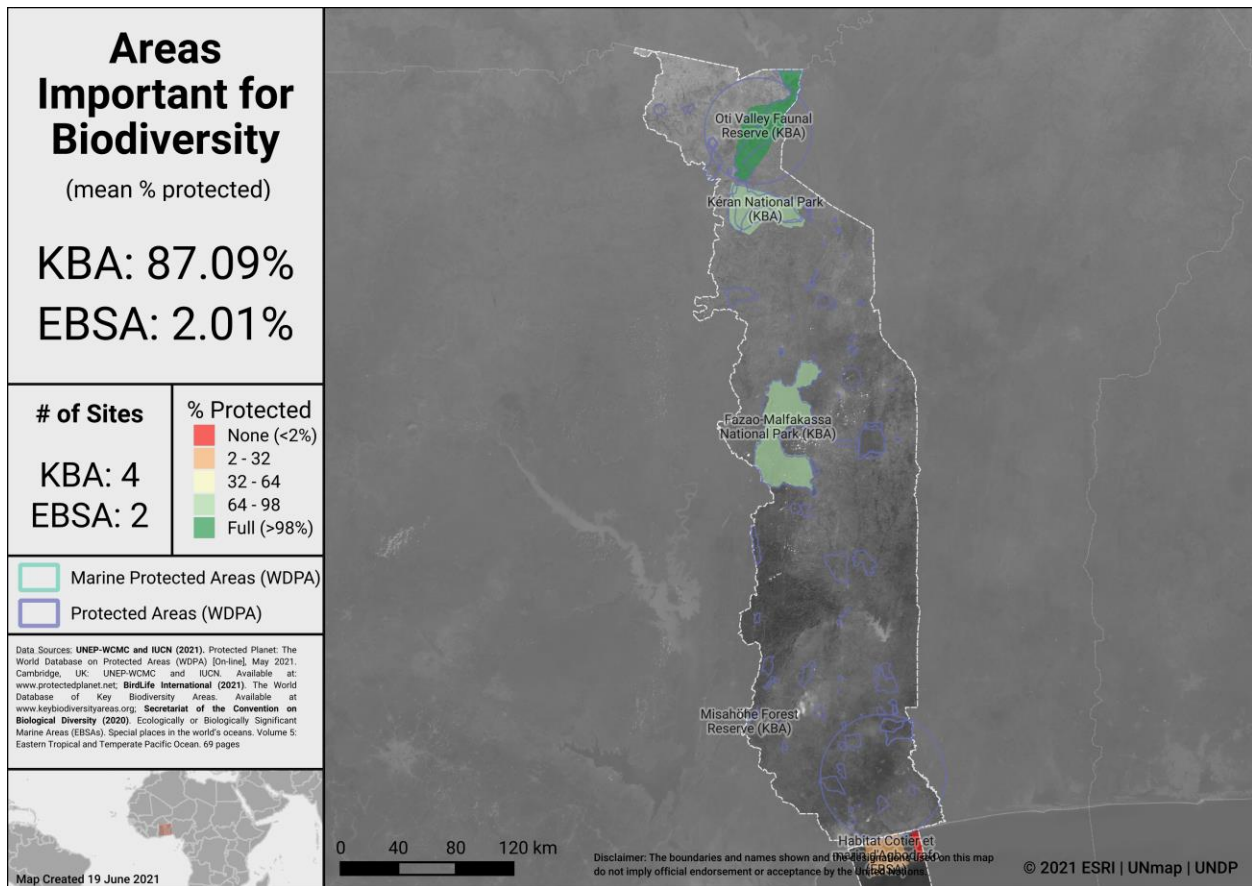
- Mean percent coverage of all KBAs by PAs and OECMs in Togo is **87.1%**.
- **1** KBA has full (>98%) coverage by PAs and OECMs.
- **3** KBAs have partial coverage by PAs and OECMs.
- **0** KBAs have no (<2%) coverage by PAs and OECMs.

Ecologically or Biologically Significant Marine Areas (EBSAs)

Other important areas for biodiversity may also include Ecologically or Biologically Significant Marine Areas (EBSAs), which were identified following the scientific criteria adopted at COP-9 (Decision IX/20; see more at: <https://www.cbd.int/ebsa/>). Sites that meet the EBSA criteria may require enhanced conservation and management measures; this could be achieved through means including MPAs, OECMs, marine spatial planning, and impact assessment.

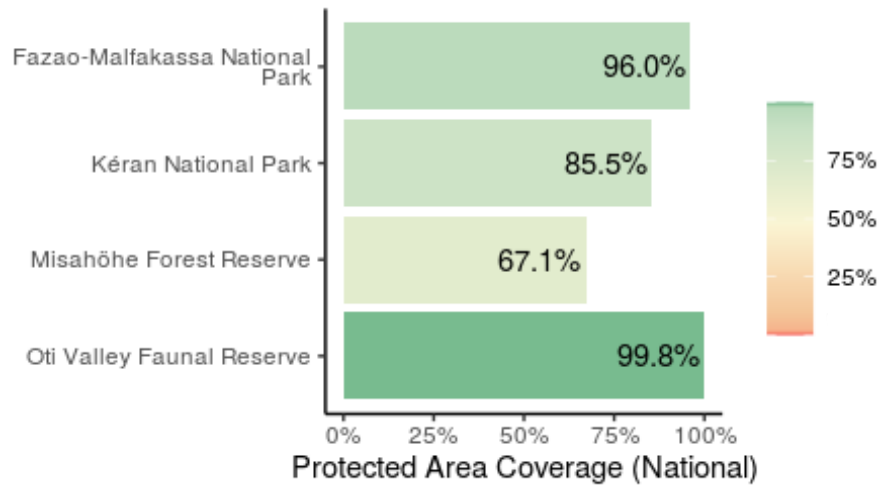
There are 2 EBSAs with some portion of their extent within Togo's EEZ, both of which have at least some coverage from PAs and OECMs.



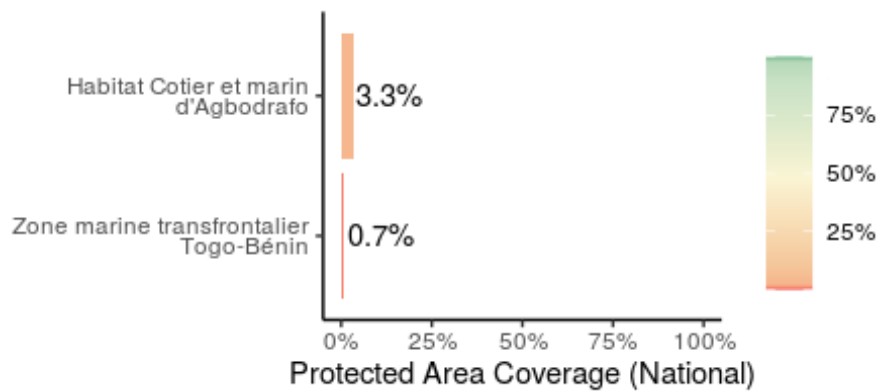


Areas Important for Biodiversity in Togo





Key Biodiversity Area Coverage (KBA) in Togo



Ecologically or Biologically Significant Marine Areas (EBSAs) in Togo

Opportunities for action

There is opportunity for Togo to increase protection of KBAs that have lower levels of coverage by PAs and OECMs; and focus on effective management for those that already have higher coverage.



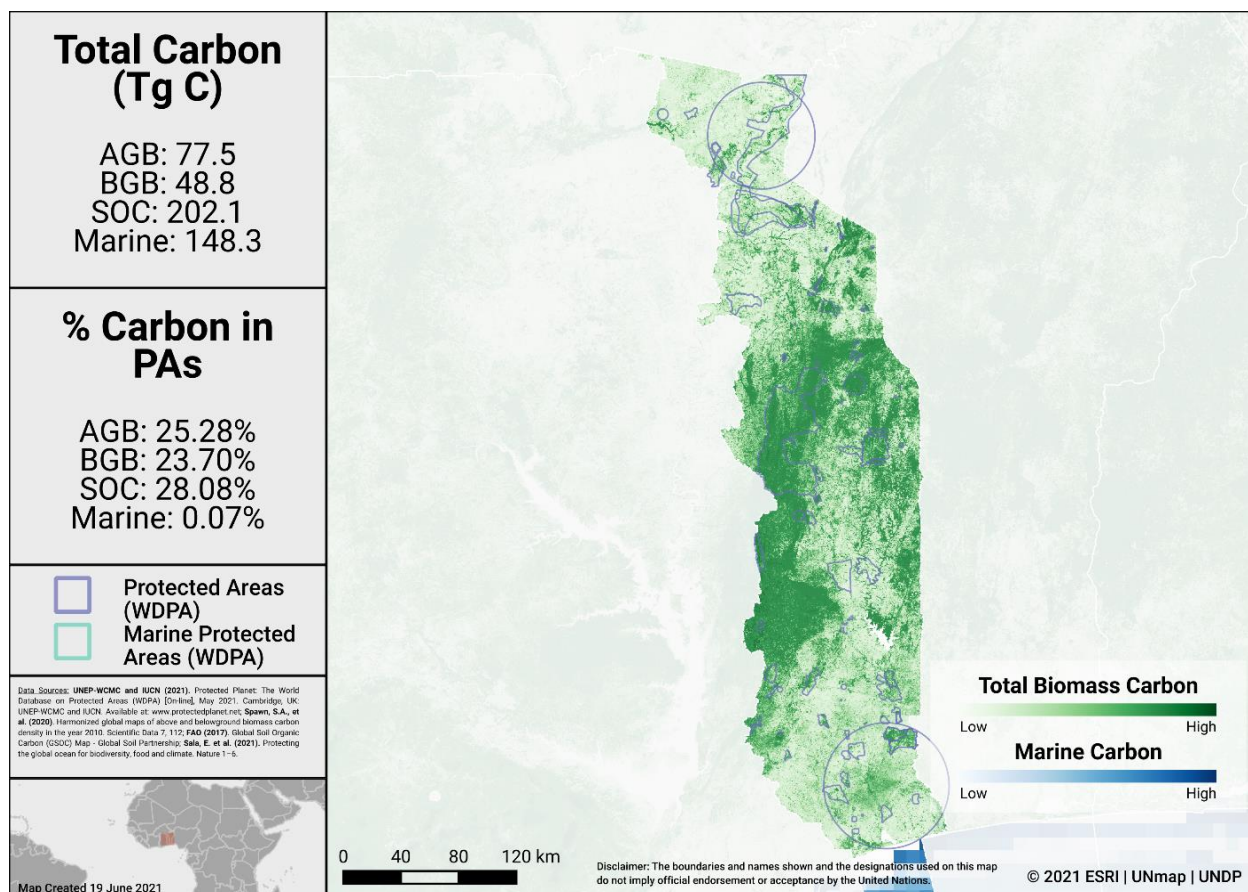
AREAS IMPORTANT FOR ECOSYSTEM SERVICES

There is no single indicator identified for assessing the conservation of areas important for ecosystem services. For simplicity, two services with available global datasets are assessed here (carbon and water). In future, other critical ecosystem services could be explored.

Carbon

Data for biomass carbon comes from temporally consistent and harmonized global maps of aboveground biomass and belowground biomass carbon density (at a 300-m spatial resolution); the maps integrate land-cover specific, remotely sensed data, and land-cover specific empirical models (see Spawn et al., 2020 for details on methodology). The Global Soil Organic Carbon Map present an estimation of SOC stock from 0 to 30 cm (see FAO, 2017). Data is also presented from global maps of marine sedimentary carbon stocks, standardized to a 1-meter depth (see Sala et al., 2021, and Atwood et al., 2020).

The map below presents the total carbon stocks in Togo and the percent of carbon in protected areas. The total carbon stocks is 77.5 Tg C from aboveground biomass (AGB), with 25.3% in protected areas; 48.8 Tg C from below ground biomass (BGB), with 23.7% in protected areas; 202.1 Tg C from soil organic carbon (SOC), with 28.1% in protected areas; and 148.3 Tg C from marine sediment carbon, with 0.1% in protected areas.



Carbon Stocks in Togo

Water

Forests and intact ecosystems support stormwater management and clean water availability, especially for large urban populations. Research that has examined the role of forests for city drinking water supplies shows that of the world's 105 largest cities, more than 30% (33 cities) rely heavily on the local protected forests, which provide ecosystem services that underpin local drinking water availability and quality (Dudley & Stolton, 2003).

Drinking water supplies for cities in Togo may similarly depend on protected areas within and around water catchments. Intact catchments can support more consistent water supply and improved water quality.

Opportunities for action

For carbon, there is opportunity for Togo to increase PA and OECM coverage in both marine and terrestrial areas with high carbon stocks, as identified in the map above. Protecting areas with high carbon stocks secures the benefits of carbon sequestration in the area.

For water, there is opportunity to increase the area of the water catchment under protection by PAs and OECMs, or in cases where there is high levels of protection, focus on effective management for these areas. Protecting the current area of forested land and potentially reforesting would have benefits for improving water security.



CONNECTIVITY & INTEGRATION

Two global indicators, the Protected Connected land indicator (ProtConn; EC-JRC, 2021; Saura et al., 2018) and the PARC-Connectedness indicator (CSIRO, 2019), have been proposed for assessing the terrestrial connectivity of PA and OECM networks. To date there is no global indicator for assessing marine connectivity, though some recent developments include proposed guidance for the treatment of connectivity in the planning and management of MPAs (see Lausche et al., 2021).

Protected Connected Land Indicator (Prot-Conn)

As of January 2021, as reported in the Joint Research Centre of the European Commission's Digital Observatory for Protected Areas (DOPA) (JRC, 2021), the coverage of protected-connected lands (a measure of the connectivity of terrestrial protected area networks, assessed using the ProtConn indicator) in Togo was 15.4%.

PARC-Connectedness Index

In 2019, as assessed using the PARC-Connectedness Index (values ranging from 0-1, indicating low to high connectivity), connectivity in Togo is 0.42. This represents no significant change since 2010.

Corridor case studies

There are currently no corridor case studies available for Togo (but see general details on conserving connectivity through ecological networks and corridors in Hilty et al 2020).

Opportunities for action

There is opportunity to focus on PA and OECM management for enhancing and maintaining connectivity. Improving connectivity increases the effectiveness of PAs and OECMs and reduces the impacts of fragmentation.

As well, a range of suggested steps for enhancing and supporting integration are included in the voluntary guidance on the integration of PAs and OECMs into the wider land- and seascapes and mainstreaming across sectors to contribute, inter alia, to the SDGs (Annex I of COP Decision 14/8).



GOVERNANCE DIVERSITY

There is a lack of comprehensive global data on governance quality and equity in PAs and OECMs. Here, we provide data on the diversity of governance types for reported PAs and OECMs.

As of May 2021, PAs in Togo reported in the WDPA have the following governance types:

- 92.0% are governed by **governments**
 - 90.8% by federal or national ministry or agency
 - 0.0% by sub-national ministry or agency
 - 1.1% by government-delegated management
- 4.6% are under **shared** governance
 - 0.0% by collaborative governance
 - 0.0% by joint governance
 - 4.6% by transboundary governance
- 0.0% are under **private** governance
- 3.4% are under **IPLC** governance
 - 0.0% by Indigenous Peoples
 - 3.4% by local communities
- 0.0% **do not** report a governance type

OECMs

As of May 2021, there are **0** OECMs in Togo reported in the WD-OECM, therefore there is no data available on OECM governance types.

Privately Protected Areas (PPAs)

There is currently no data available on PPAs for Togo (see Gloss et al., 2019, and Stolton et al., 2014 for details).

Information on territories and areas conserved by Indigenous Peoples and local communities (ICCAs) reported from CBD technical series case studies:

There is currently no data available on ICCAs for Togo (see Kothari et al., 2012 and the [ICCA Registry](#) for further details).

Other Indigenous lands

There is currently no data available on lands managed and/or controlled by Indigenous Peoples in Togo (see Garnett et al 2018 for details).

Opportunities for action

Explore opportunities for governance types that have lower representation, for Togo this could relate to shared governance.



There is also opportunity for Costa Rica to complete governance and equity assessments, to establish baselines and identify relevant actions for improvement. Examples of existing tools and methodologies include: Governance Assessment for Protected and Conserved Areas (Franks & Brooker, 2018), Social Assessment of Protected Areas (Franks et al 2018), and Site-level assessment of governance and equity (IIED, 2020). As well, a range of suggested actions are included in the voluntary guidance on effective governance models for management of protected areas, including equity (Annex II of COP Decision 14/8).

Equator Prize Projects

The Equator Initiative brings together the United Nations, governments, civil society, businesses and grassroots organizations to recognize and advance local sustainable development solutions for people, nature and resilient communities.

The Equator Prize projects provide examples of unique and locally based governance of natural resources. Togo has the following Equator Prize winners that showcase examples of local, sustainable community action:

Organization	Year	Project Description
Comité Villageois de Développement d'Ando Kpomey (Village Development Committee of Ando Kpomey)	2012	<p>After a devastating bush fire in 1973, the village of Ando Kpomey created a green belt buffer around its community that has grown into a 100-hectare forest. A participatory management committee has been established to monitor the forest and its resources and to regulate its use. The community authorizes limited resource extraction to meet livelihood needs – both timber and non-timber forest products – and manages revenues generated from the sale of forest-based products. Local women are authorized entry to the community forest to access firewood, significantly reducing the average time needed to forage for cooking fuel. Various crops are grown in the forest, including a range of medicinal plants which have served to bolster local healthcare needs.</p> <p>Neighboring communities have been enlisted to protect the forest, and have benefited from knowledge sharing on natural resource management, participatory planning and forest conservation. The village hosts peer-to-peer learning exchanges to share lessons learned, and has done so with communities and organization across Togo and Burkina Faso. The Ando Kpomey community forest model has been replicated by five communities in the local prefecture.</p>



PROTECTED AREA MANAGEMENT EFFECTIVENESS

This section provides information on the coverage of PAs and OECMs with completed protected area management effectiveness (PAME) assessments as reported in the global database (GD-PAME). The proportion of terrestrial and marine PAs with completed PAME assessments is also calculated and compared with the 60% target agreed to in COP-10 Decision X/31. Information is also included regarding changes in forest cover nationally within PAs and OECMs.

Protected area management effectiveness (PAME) assessments

As of May 2021, Togo has 86 PAs reported in the WDPA; of these PAs, 4 (4.6%) have management effectiveness evaluations reported in the global database on protected area management effectiveness (GD-PAME).

- 6.3% (3,644 km²) of the terrestrial area of the country is covered by PAs with completed management effectiveness evaluations.
 - 22.7% of the area of terrestrial PAs have completed evaluations.
- 0.0% (0.0 km²) of the marine area of the country is covered by PAs with completed management effectiveness evaluations.
 - 0.0% of the area of marine PAs have completed evaluations.

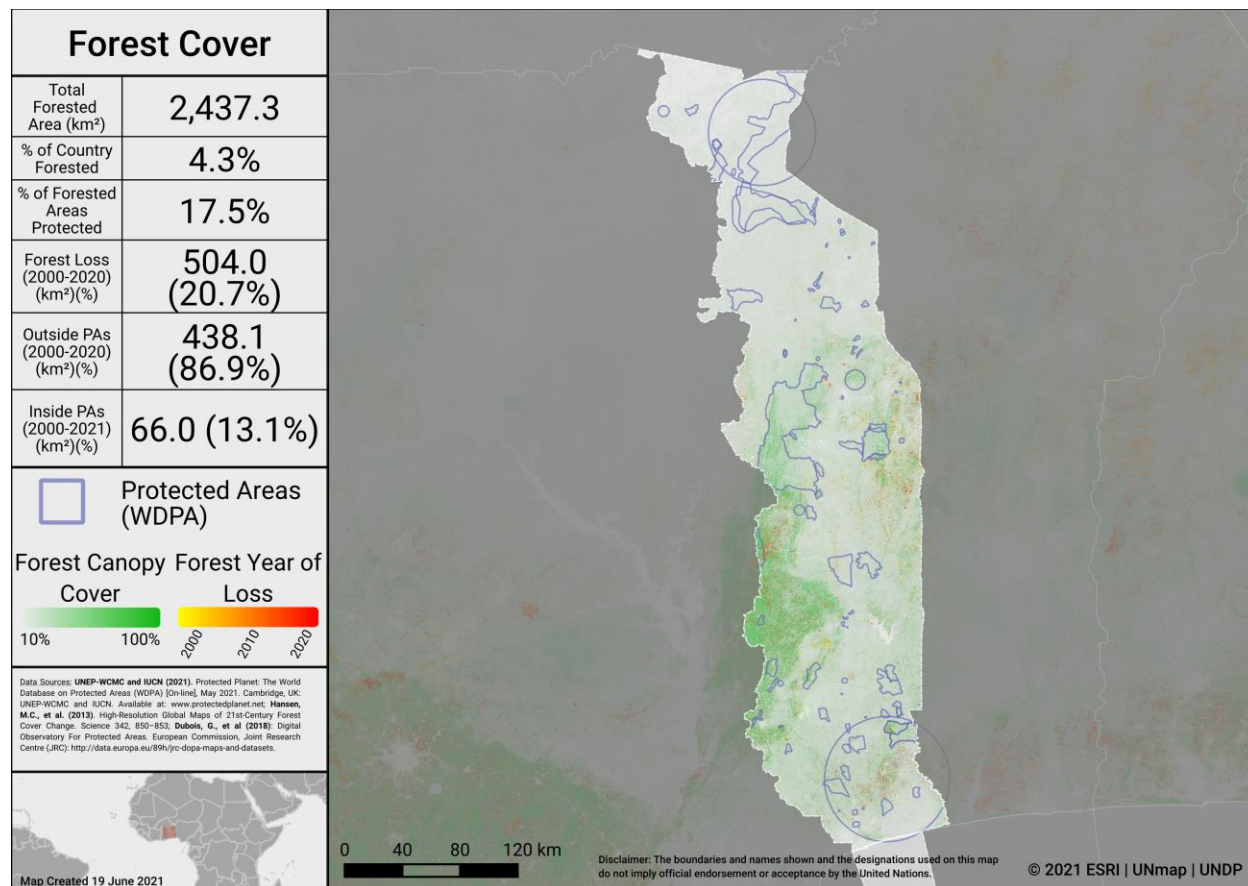
The 60% target for completed management effectiveness assessments (per COP Decision X/31) **has not** been met for terrestrial PAs and **has not** been met for marine PAs.

As of May 2021, there are 0 OECMs in Togo reported in the WD-OECM and no information available on the management effectiveness of potential OECMs.

Changes in forest cover in protected areas and OECMs

Forested areas in Togo cover approximately 4.3% of the country, an area of 2,437.3 km². Approximately 17.5% (425.8 km²) of this is within the protected area estate of Togo. Over the period 2000-2020 loss of forest cover amounted to over 504.0 km², or 0.9% of the country (20.7% of forested area), of which 66.0 km² (13.1% of forest loss) occurred within protected areas. The map below shows how forest cover has changed in Togo from 2000-2020 both inside and outside of PAs. This can indicate how effective PAs are in reducing forest cover loss.





Forest Cover and Forest Loss in Togo

Opportunities for action

The 60% target for completed management effectiveness assessments (per COP Decision X/31) **has not** been met for terrestrial PAs and **has not** been met for marine PAs. Therefore, there is opportunity to increase protected area management effectiveness (PAME) evaluations for both terrestrial and marine PAs to achieve the target.

There is also opportunity to implement the results of completed PAME evaluations, to improve the quality of management for existing PAs and OECMs (e.g. through adaptive management and information sharing, increasing the number of sites reporting 'sound management') and to increase reporting of biodiversity outcomes in PAs and OECMs.

SECTION II: EXISTING PROTECTED AREA AND OECM COMMITMENTS

PRIORITY ACTIONS FROM 2015-2016 REGIONAL WORKSHOPS

National priority actions for Aichi Biodiversity Target 11 were provided by Parties following a series of regional workshops in 2015 and 2016. The Capacity-building workshop for Africa on achieving Aichi Biodiversity Targets 11 and 12 took place 21 - 24 March 2016 in Entebbe, Uganda. Progress towards the quantitative targets for marine and terrestrial coverage has been assessed based on data reported in the WDPA and WD-OECM as of 2021. For more information, see the workshop report at:

<https://www.cbd.int/meetings/>

The following actions were identified during the workshops:

Terrestrial coverage: Identify priority protected areas and develop and implement management plans for these areas [No area provided].

Marine coverage: Creation of a marine protected area (MPA) [No area given].

Areas Important for biodiversity and ecosystem services: Establish a mapping of all terrestrial, aquatic and marine areas important for the conservation of biodiversity to ensure the sustainable use of biological resources.

Connectivity:

- 1) Creation of a marine protected area (MPA) connecting the regional marine protected areas in West Africa network
- 2) Creation of transboundary protected area systems: Fazao-Malfakassa (Togo) and Kyabobo National Park (Ghana)
- 3) Creation of transboundary protected area systems: WAPOK (Oti-Keran Mandouri - Togo) and WAP (Benin, Burkina Faso, Niger)
- 4) Creation of transboundary protected area systems: Togodo (Togo) and ADJAME (Benin).

Management effectiveness: Re-evaluate management effectiveness.

Governance and Equity: implementation of biosafety protocol and Nagoya protocol on Access to Genetic Resources and the Fair and Equitable Sharing of their Benefits.

OECMs: Creation of a Biosphere Reserve between Togo and Benin as part of ProMono.

No actions were identified for the following elements of Target 11: Ecological representation, Integration



NATIONAL BIODIVERSITY STRATEGY AND ACTION PLANS (NBSAPs)

Togo has submitted an NBSAP during the Strategic Plan for Biodiversity 2011-2020 (most recent NBSAP is available at: <https://www.cbd.int/nbsap/search/>).

This NBSAP **did not** include a specific quantitative target for increasing **terrestrial** or **marine** protected areas or OECMs.

National Objective 7 - By 2020, seven of the 13 priority protected areas have management plans that are important for the conservation of biodiversity (D'ici à 2020, 7 des 13 aires protégées prioritaires sont dotés des plans d'aménagement qui présentent d'importants intérêts pour la conservation de la biodiversité)

National Objective 14 - Initiate action by 2018 to establish a Marine Protected Area (MPA) linking the regional network of marine protected areas in West Africa (Engager d'ici à 2018 des actions, en vue de la création d'une aire marine protégée (AMP) reliant le réseau régional d'aires marines protégées d'Afrique de l'Ouest)

Actions from the NBSAP will also address other elements of Aichi Biodiversity Target 11:

NBSAP Action number	Action (original language from NBSAP)	Action (English translation)
5	A5. Organiser des rencontres (forums, séminaires, ateliers et journées d'échange) sur les aires protégées et la biodiversité	Organize meetings (forums, seminars, workshops and exchange days) on protected areas and biodiversity
12	A13. Renforcer les capacités fonctionnelles des comités locaux de gestion des aires protégées	Strengthen the functional capacities of local management committees for protected areas
29	B1. Mobiliser les ressources nécessaires pour l'élaboration des plans d'aménagement des aires de conservation de la biodiversité	Mobilize resources for the development of management plans for biodiversity conservation areas
30	B2. Intégrer la gestion des aires protégées dans les politiques et programmes sectoriels de développement	Integrate the management of protected areas into sectoral policies and programs for development
38	B10. Accélérer et finaliser le processus de délimitation et de matérialisation de façon consensuelle des aires protégées	Expedite and consensually finalize the process of protected areas delimitation and materialisation
40b	B12. Renforcer la police forestière et la surveillance des aires protégées	Strengthen forest policy and monitoring of protected areas

NBSAP Action number	Action (original language from NBSAP)	Action (English translation)
41	B13. Déplacer les populations occupant les aires protégées, avec des mesures d'accompagnement	Moving populations out of protected areas, with accompanying measures
54	B35. Évaluer et valoriser le stock de carbone dans les aires protégées	Evaluate and enhance the carbon stock in protected areas
85	E4. Former les acteurs locaux aux techniques de gestion et de protection des aires protégées et de la biodiversité	Train local actors in protected areas and biodiversity management and protection techniques

APPROVED GEF-5, GEF-6 PROTECTED AREA PROJECTS

Approved GEF-5 and GEF-6 PA-related biodiversity projects

This includes biodiversity projects from the fifth and sixth replenishment of the Global Environment Facility (GEF-5 and GEF-6) with a clear impact of the quantity or quality of PAs; also including some projects occurring within the wider landscapes/seascapes around PAs. Only those with a status of 'project approved' or 'concept approved' as of June 2019 were considered. The qualifying elements likely benefiting from each GEF project is assessed based on a keyword search of Project Identification Forms (PIF).

GEF ID	PA increase?	Area to be added (km²)	Qualitative elements potentially benefitting (based on keyword search of PIFs)
4709	No	N/A	Areas important for biodiversity; Effectively managed; Equitably managed; Integration

OTHER ACTIONS/COMMITMENTS

Global Ocean Alliance

Togo **has** joined the Global Ocean Alliance: 30by30 initiative.

The Global Ocean Alliance 30by30 is a UK led initiative [currently containing 53 countries as signatories]. Its aim is to protect at least 30% of the global ocean as Marine Protected Areas (MPAs) and Other Effective area-based Conservation Measures (OECMs) by 2030.

Commitments for PAs and OECMs from Other National Policies

Policy document	Ecosystem	Policy text
Nationally Determined Contribution	Forest ecosystems	Avoided forest conversion: 0.5 Mt CO ₂ e/yr
Nationally Determined Contribution	Wetland ecosystems	Avoided peat impacts: 0.06 Mt CO ₂ e/yr.
Nationally Determined Contribution	Forest ecosystems	Mitigation: Promote the roll-out of energy-efficient stoves, which can yield 50-60% savings in wood and charcoal.
Nationally Determined Contribution	Forest ecosystems	Mitigation: Promotion of biofuels.
Nationally Determined Contribution	Forest ecosystems	Mitigation: Introduction of solar equipment in households
Nationally Determined Contribution	Forest ecosystems	Adaptation: Development of renewable energies (target of 4% of the energy mix)
Nationally Determined Contribution	Wetland ecosystems	Mitigation: Implementation of pilot programmes based on IWRM and measures to increase water resource availability, in both quantity and quality
Nationally Determined Contribution	Wetland ecosystems	Adaptation Protection of water resources
Nationally Determined Contribution	Grasslands & Agricultural systems	Mitigation: Fight against bushfires

Policy document	Ecosystem	Policy text
National Development Plan	Wetland ecosystems	Creation of water storage reservoirs also used for gardening activities
National Development Plan	Grasslands & Agricultural systems	Extension of sustainable land management practices
National Adaptation Program of Action	Forest ecosystems	Promotion of alternative energy saving technologies
National Biodiversity Strategy Action Plan	Forest ecosystems	Identify and support the development and conservation of sacred forests and community
National Biodiversity Strategy Action Plan	Forest ecosystems	Promote the use of other construction material other than wood
National Adaptation Program of Action	Forest ecosystems	Development of shallows and wetlands for development and diversification against season
National Adaptation Program of Action	Grasslands & Agricultural systems	Development of appropriate cultivation techniques (crop rotation) etc
National Adaptation Program of Action	Grasslands & Agricultural systems	Development of appropriate cultivation techniques (crop rotation) etc
National Adaptation Program of Action	Coastal ecosystems	Reinforcement of coastal protection measures against the extraction of sand and gravel



ANNEX I

FULL LIST OF TERRSTRIAL ECOREGIONS

Ecoregion Name	Area (km²)	% of Global Ecoregion in Country	% of Country in Ecoregion	Area Protected (km²)	% Protected in Country
Eastern Guinean forests	6,256.2	3.3	11.0	912.7	14.6
Guinean forest-savanna	14,354.5	2.1	25.3	5,606.1	39.1
West Sudanian savanna	36,105.5	2.2	63.7	7,945.1	22.0



REFERENCES

- Atwood, TB, Witt, A, Mayorga, J, Hammill, E, & Sala, E. (2020). Global patterns in marine sediment carbon stocks. *Frontiers in Marine Science*.
<https://doi.org/10.3389/fmars.2020.00165>
- BirdLife International (2021). World Database of Key Biodiversity Areas. Available at:
<http://www.keybiodiversityareas.org>
- CBD (2010). Decision adopted by the Conference of the Parties to the Convention on Biological Diversity at its tenth meeting. Decision X/2. Strategic plan for biodiversity 2011–2020. Retrieved from <https://www.cbd.int/doc/decisions/cop-10/cop-10-dec02-en.pdf>.
- CSIRO (2019). Protected area connectedness index (PARCconnectedness).
<https://www.bipindicators.net/indicators/protected-area-connectedness-index-parcconnectedness>
- Dinerstein, E., et al. (2017). An ecoregion-based approach to protecting half the terrestrial realm. *BioScience* 67(6), 534-545.
- Donald et al., 2019, The prevalence, characteristics and effectiveness of Aichi Target 11' s "other effective area-based conservation measures"(OECMs) in Key Biodiversity Areas. *Conservation Letters*, 12(5).
- EC-JRC (2021). DOPA Indicator factsheets: <http://dopa.jrc.ec.europa.eu/en/factsheets>
- FAO (2017). Global Soil Organic Carbon (GSOC) Map - Global Soil Partnership [WWW Document]. URL <http://www.fao.org/global-soil-partnership/pillars-action/4-information-and-data/global-soil-organic-carbon-gsoc-map/en/>.
- Franks, P and Booker, F (2018). Governance Assessment for Protected and Conserved Areas (GAPA): Early experience of a multi-stakeholder methodology for enhancing equity and effectiveness. IIED Working Paper, IIED, London. <https://pubs.iied.org/17632IIED>
- Franks, P. et al. (2018). Social Assessment for Protected and Conserved Areas (SAPA). Methodology manual for SAPA facilitators. Second edition. IIED, London.
<https://pubs.iied.org/14659iied>
- Garnett et al. (2018). A spatial overview of the global importance of Indigenous lands for conservation. *Nature Sustainability*, 1(7), 369.
- Global Environment Facility (GEF-5 and GEF-6); all projects can be found online at:
<https://www.thegef.org/projects>
- Gloss, L. et al. (2019). International Outlook for Privately Protected Areas: Summary Report. International Land Conservation Network (a project of the Lincoln Institute of Land Policy) and United Nations Development Programme. Summary report, and individual country profiles, available at: <https://nbsapforum.net/knowledge-base/resource/international-outlook-privately-protected-areas-summary-report>

Hansen, M.C., Potapov, P.V., Moore, R., Hancher, M., Turubanova, S.A., Tyukavina, A., Thau, D., Stehman, S.V., Goetz, S.J., Loveland, T.R., Kommareddy, A., Egorov, A., Chini, L., Justice, C.O., Townshend, J.R.G., (2013). High-Resolution Global Maps of 21st-Century Forest Cover Change. *Science* 342, 850–853. <https://doi.org/10.1126/science.1244693>

Hilty, J et al. (2020). Guidelines for conserving connectivity through ecological networks and corridors. Best Practice Protected Area Guidelines Series No. 30. Gland, Switzerland: IUCN. <https://portals.iucn.org/library/sites/library/files/documents/PAG-030-En.pdf>

IIED 2020. Site-level assessment of governance and equity (SAGE) <https://www.iied.org/site-level-assessment-governance-equity-sage>.

IUCN (2016). A Global Standard for the Identification of Key Biodiversity Areas, Version 1.0. First edition. Gland, Switzerland: IUCN. <https://portals.iucn.org/library/sites/library/files/documents/2016-048.pdf>

IUCN-WCPA (2017). IUCN-WCPA Task Force on OECMs collation of case studies submitted 2016-2017. <https://www.iucn.org/commissions/world-commission-protected-areas/our-work/oecms/oecm-reports>

Joint Research Centre of the European Commission (JRC) (2021), The Digital Observatory for Protected Areas (DOPA) Explorer 4.1 [On-line], [Apr/2021], Ispra, Italy. Available at: <http://dopa-explorer.jrc.ec.europa.eu>

Kothari, A., et al. (Eds) (2012). Recognising and Supporting Territories and Areas Conserved By Indigenous Peoples And Local Communities: Global Overview and National Case Studies. Secretariat of the CBD, ICCA Consortium, Kalpavriksh, and Natural Justice, Montreal, Canada. Technical Series no. 64.

Lausche, B., Laur, A., Collins, M. (2021). *Marine Connectivity Conservation 'Rules of Thumb' for MPA and MPA Network Design*. Version 1.0. IUCN WCPA Connectivity Conservation Specialist Group's Marine Connectivity Working Group.

McDonald, R.I., Weber, K., Padowski, J., Flörke, M., Schneider, C., Green, P.A., Gleeson, T., Eckman, S., Lehner, B., Balk, D., Boucher, T., Grill, G., Montgomery, M., (2014). Water on an urban planet: Urbanization and the reach of urban water infrastructure. *Global Environmental Change* 27, 96–105. <https://doi.org/10.1016/j.gloenvcha.2014.04.022>

National Biodiversity Strategy and Action Plan (NBSAPs); most recent NBSAP is available at: <https://www.cbd.int/nbsap/search/>

Newbold, T., Hudson, L.N., Arnell, A.P., Contu, S., Palma, A.D., Ferrier, S., Hill, S.L.L., Hoskins, A.J., Lysenko, I., Phillips, H.R.P., Burton, V.J., Chng, C.W.T., Emerson, S., Gao, D., Pask-Hale, G., Hutton, J., Jung, M., Sanchez-Ortiz, K., Simmons, B.I., Whitmee, S., Zhang, H., Scharlemann, J.P.W., Purvis, A., (2016). Has land use pushed terrestrial biodiversity beyond the planetary boundary? A global assessment. *Science* 353, 288–291. <https://doi.org/10.1126/science.aaf2201>

Sala, E. et al. (2021). Protecting the global ocean for biodiversity, food and climate. *Nature*, 592(7854), 397-402.

Saura, S. et al. (2018). Protected area connectivity: Shortfalls in global targets and country-level priorities. *Biological Conservation*, 219, 53-67.

Saura, S. et al (2017). Protected areas in the world's ecoregions: How well connected are they? *Ecological Indicators*, 76, 144-158.

Spalding, M.D., et al. (2012). Pelagic provinces of the world: a biogeographic classification of the world's surface pelagic waters. *Ocean & Coastal Management* 60, 19–30.

Spalding, M.D., et al. (2007). Marine ecoregions of the world: a bioregionalization of coastal and shelf areas. *BioScience* 57(7): 573–583.

Spawn, S.A., Sullivan, C.C., Lark, T.J., Gibbs, H.K., (2020). Harmonized global maps of above and belowground biomass carbon density in the year 2010. *Scientific Data* 7, 112.
<https://doi.org/10.1038/s41597-020-0444-4>

Stolton, S. et al. (2014). *The Futures of Privately Protected Areas*. Gland, Switzerland: IUCN.

UNEP-WCMC and IUCN (2021) *Protected Planet Report 2020*. UNEP-WCMC and IUCN: Cambridge UK; Gland, Switzerland.

UNEP-WCMC and IUCN (2021), *Protected Planet: The Global Database on Protected Area Management Effectiveness (GD-PAME)* [On-line], [May/2021] , Cambridge, UK: UNEP-WCMC and IUCN. Available at: www.protectedplanet.net.

UNEP-WCMC and IUCN (2021), *Protected Planet: The World Database on Protected Areas (WDPA)* [On-line], [May/2021] , Cambridge, UK: UNEP-WCMC and IUCN. Available at: www.protectedplanet.net.

UNEP-WCMC and IUCN (2021), *Protected Planet: The World Database on Other Effective Area-based Conservation Measures (WD-OECM)* [On-line], [May/2021] , Cambridge, UK: UNEP-WCMC and IUCN. Available at: www.protectedplanet.net.

UN Ocean Conference Voluntary Commitments, available at:
<https://oceanconference.un.org/commitments/>

Williams, B.A., Venter, O., Allan, J.R., Atkinson, S.C., Rehbein, J.A., Ward, M., Marco, M.D., Grantham, H.S., Ervin, J., Goetz, S.J., Hansen, A.J., Jantz, P., Pillay, R., Rodríguez-Buriticá, S., Supples, C., Virnig, A.L.S., Watson, J.E.M., (2020). Change in Terrestrial Human Footprint Drives Continued Loss of Intact Ecosystems. *One Earth* 3, 371–382.
<https://doi.org/10.1016/j.oneear.2020.08.009>

This document was created using the knitr package with R version 4.0.3.

For any questions please contact support@unbiodiveristylab.org.

