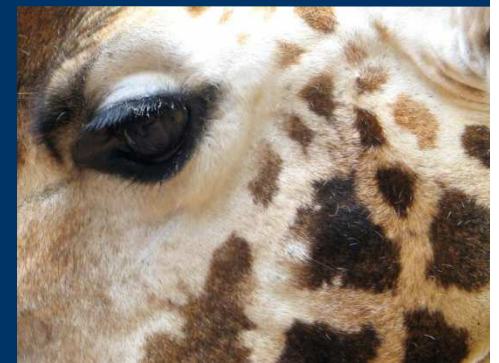


PoWPA Action Planning and Implementation



Jamison Ervin, UNDP

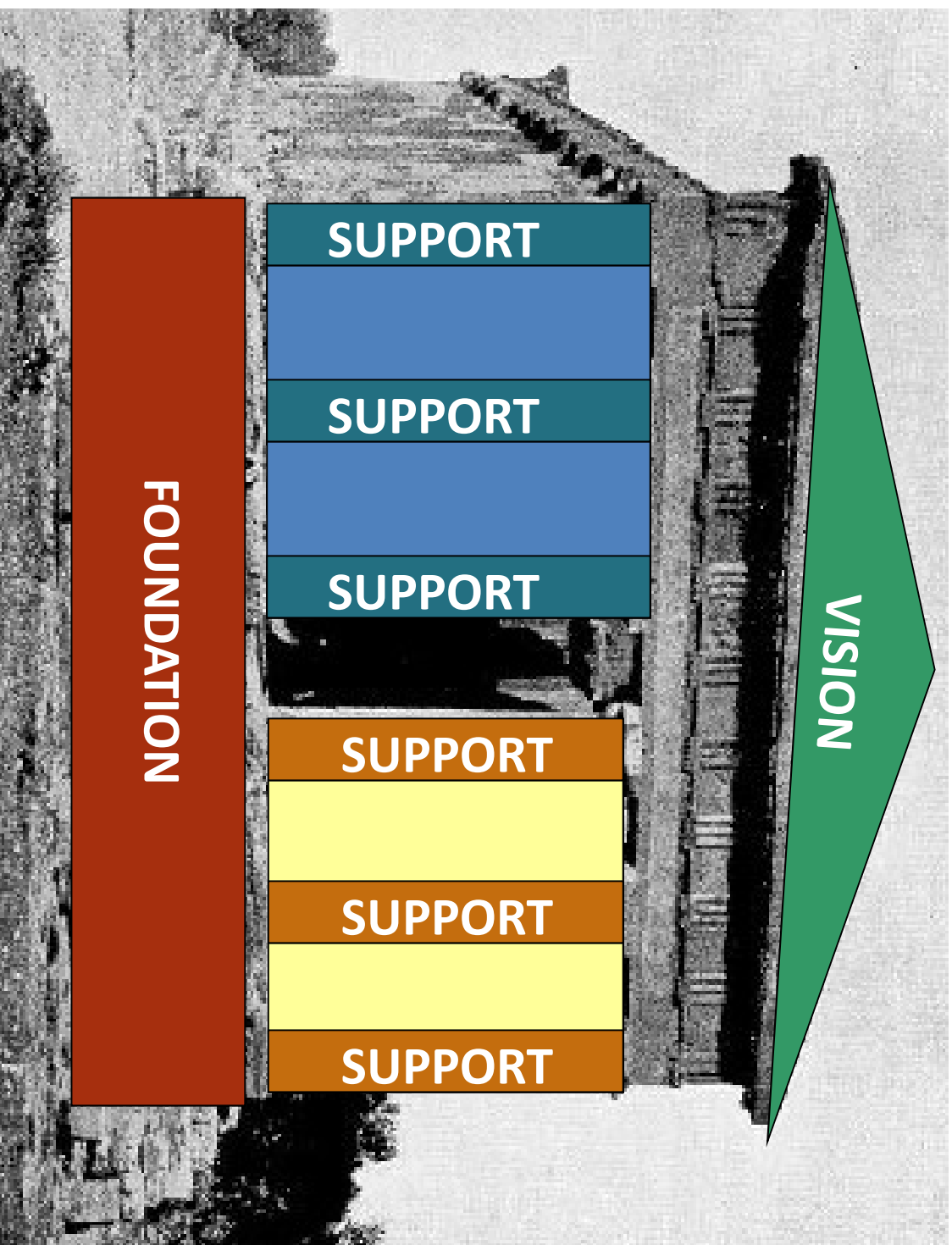
Photo credits: J. Ervin

CoP-9 and CoP-10 Decisions



- Appoint a CBD PoWPA Focal Point
- Establish multi-sectoral advisory committees
- Develop an action plan for implementing the PoWPA

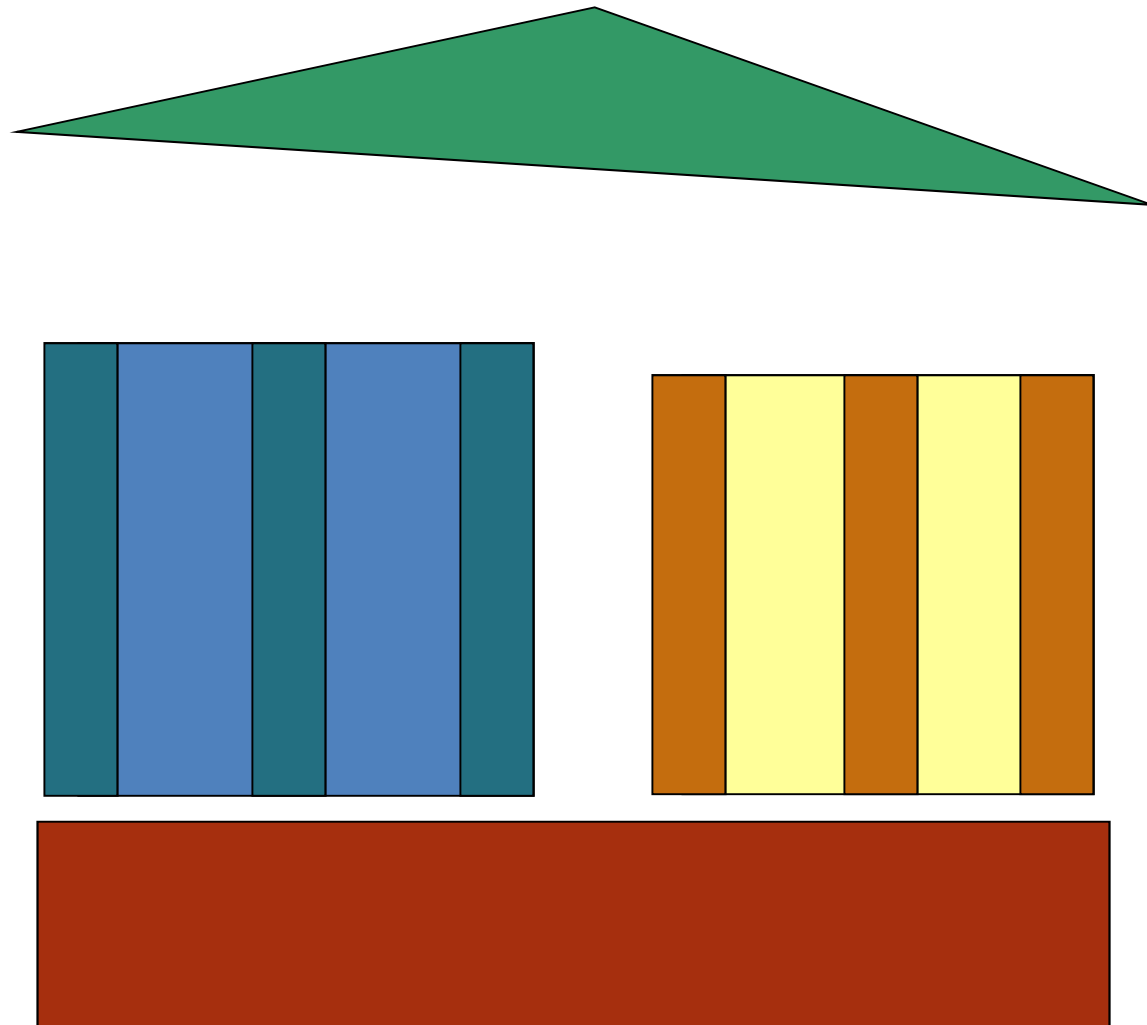
Elements of a POWPA Action Plan



Elements of a PoWPA Action Plan



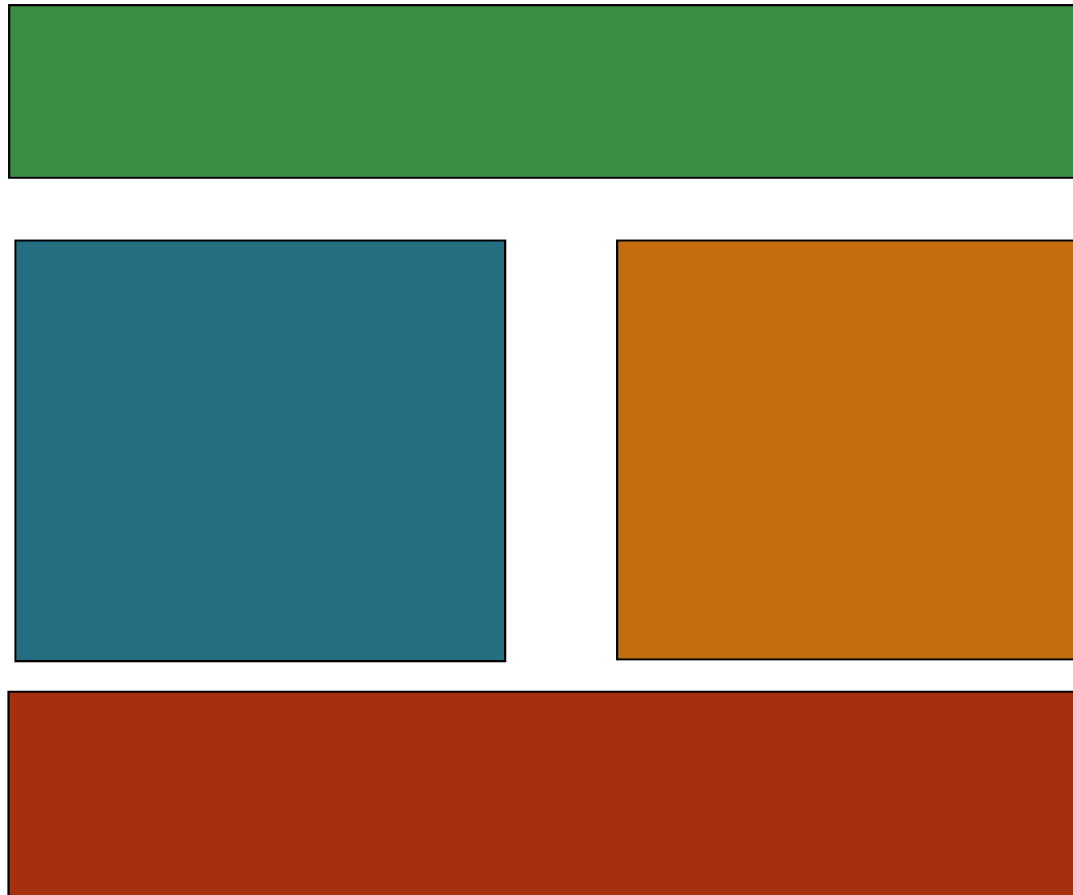
Elements of a PoWPA Action Plan



Elements of a PoWPA Action Plan



Elements of a PoWPA Action Plan



Elements of a PoWPA Action Plan

VISION AND GOALS

**IMPROVE PA
NETWORK
DESIGN**

**IMPROVE PA
MANAGEMENT**

**IMPROVE PA ENABLING
ENVIRONMENT**

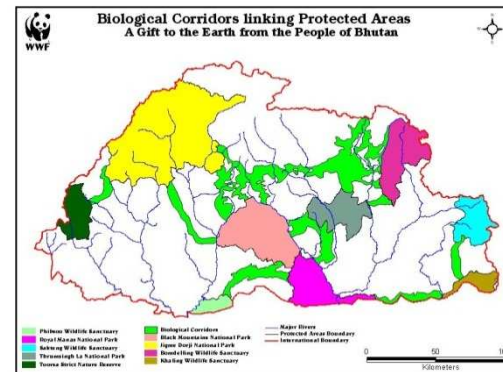
VISION AND GOALS

- Vision of the overall PA network
- Short and long-term goals for the PA network
- Specific targets for protection
- Social and economic benefits and values



PLAN TO IMPROVE PA NETWORK DESIGN

- Plan for improving representativeness
- Plan for improving connectivity
- Plan for PA restoration
- Plan for filling gaps
- Plan for diversifying governance types
- Plan for monitoring and reporting on ecological gaps



PLAN TO IMPROVE PA MANAGEMENT

- Plan for assessing and abating key threats
- Plan for improving management effectiveness
- Plan for strengthening capacity
- Plan for improving benefits & equity sharing
- Plan for monitoring management effectiveness



PA ENABLING ENVIRONMENT

- Plan for improving PA policies
- Plan for improving cross-sectoral laws policies and integration
- Plan for improving PA governance
- Plan for sustainable finance of PA network
- Plan for monitoring and reporting on PA enabling environment



ELEMENTS OF A PoWPA ACTION PLAN

SUPPORTING INFORMATION

VISION AND GOALS

IMPROVE PA
NETWORK
DESIGN

IMPROVE PA
MANAGEMENT

IMPROVE PA ENABLING
ENVIRONMENT



BACKGROUND
INFORMATION



IMPLEMENTATION
PLAN



ASSESSMENTS &
APPENDICES

SUPPORTING INFORMATION

VISION AND GOALS

IMPROVE PA
NETWORK
DESIGN

IMPROVE PA
MANAGEMENT

IMPROVE PA ENABLING
ENVIRONMENT

BACKGROUND INFORMATION

- Introduction and context of action plan
- Linkages to other national and regional plans
- Process for developing and approving action plan
- General information about national protected area system

SUPPORTING INFORMATION

VISION AND GOALS

IMPROVE PA
NETWORK
DESIGN

IMPROVE PA
MANAGEMENT

IMPROVE PA ENABLING
ENVIRONMENT

IMPLEMENTATION PLAN

- Mechanisms to incorporate costs into national budgets
- Prioritized actions and strategies
- Specific tasks, responsibilities and timeline

SUPPORTING INFORMATION

VISION AND GOALS

IMPROVE PA
NETWORK
DESIGN

IMPROVE PA
MANAGEMENT

IMPROVE PA ENABLING
ENVIRONMENT

ASSESSMENT RESULTS AND APPENDICES

- Gap assessment results
- Threat assessment results
- Management effectiveness results
- Governance assessment results
- Capacity assessment results
- Sustainable finance results
- Policy environment results
- Valuation assessment results



Elements of a PoWPA Action Plan

- Background information
- Vision and goals
- Plan to improve PA network
- Plan to improve PA management
- Plan to improve PA enabling environment
- Plan for implementation
- Appendices (assessment results)

A PoWPA Action Plan is...



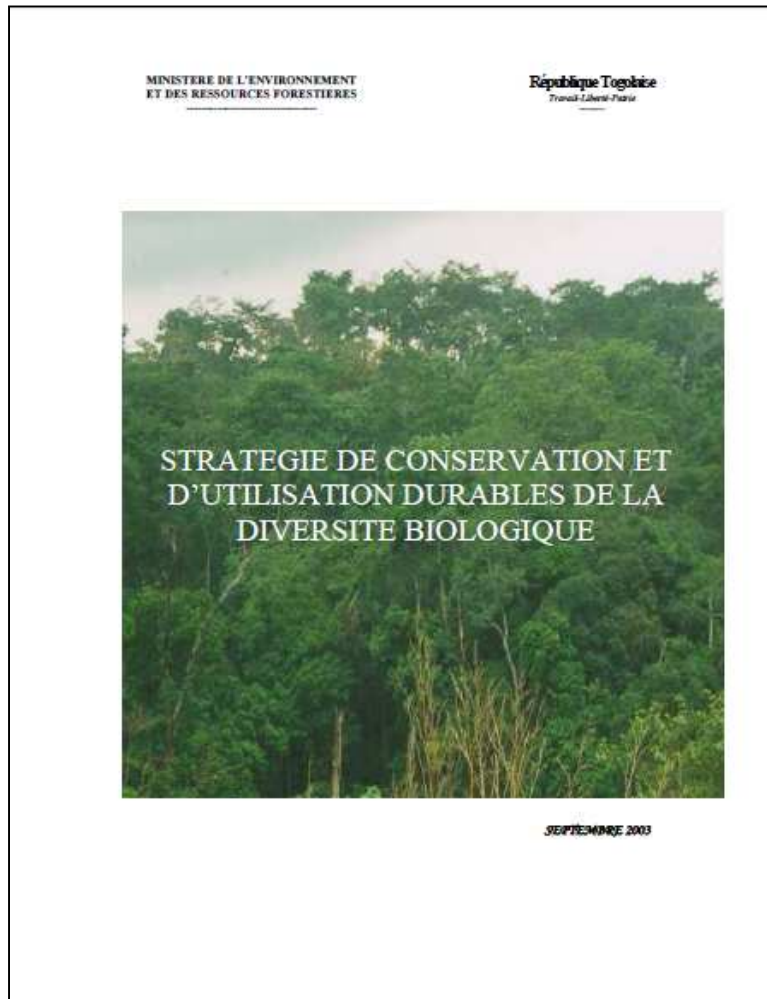
- ...a national strategic plan for implementing the PoWPA
- ...a plan for implementing Target 11 of Aichi Targets
- ...a chapter of the NBSAP
- ...a mandate for securing GEF funding

A PoWPA Action Plan is...



- ...a national strategic plan for implementing the PoWPA
- ...a plan for implementing Target 11 of Aichi Targets
- ...a chapter of the NBSAP
- ...a mandate for securing GEF funding

A PoWPA Action Plan is...



- ...a national strategic plan for implementing the PoWPA
- ...a plan for implementing Target 11 of Aichi Targets
- ...a chapter of your NBSAP
- ...a mandate for securing GEF funding

A PoWPA Action Plan is...



- ...a national strategic plan for implementing the PoWPA
- ...a plan for implementing Target 11 of Aichi Targets
- ...a chapter of the NBSAP
- ...a mandate for securing GEF funding

Exercise – Background information

Worksheet for PoWPA Action Planning and Implementation

1. Background elements of a PoWPA Action Plan:

Background Elements	Status
• Background and context	
• Linkages to other national and regional plans	
• Description of threats to protected areas	
• Information about the current protected area	

2. For each element of the PoWPA Action Plan, provide a brief description of the element and its objective:

Key Assessment	Timeline	Budget
• Has a multi-stakeholder advisory committee been established? (1.1)		
• What is the progress on assessing gaps in protected area management? (1.2)		
• What is the progress in assessing protected area effectiveness ? (1.3)		
• What is the progress in establishing transboundary regional networks ? (1.3)		
• What is the progress in developing site-level management plans ? (1.4)		
• What is the progress in assessing threats and opportunities for restoration ? (1.5)		
• What is the progress in assessing equitable sharing of benefits? (2.1)		
• What is the progress in assessing protected area governance ? (2.1)		
• What is the progress in assessing the participation of indigenous and local communities in key protected area decisions? (2.2)		

From GEF grants, from previous reports and from assessments

Exercise – Background information

POWPA ACTIONPLAN- BENIN

2. Threats to the protected areas

1. **Threat 1: Population growth and development of human and industrial settlements.**

• Background
• Linkages to
• Description
• Informatic

Benin population has increased by 41% between 1992 and 2002. The population density went from 44 habitants /km² to 60 habitants /km² in 10 years. The eight (8) departments that are located in the South and the center of the country cover about 15% of the surface of the country and gather 68% of the national population. Along with the population growth, came a development of human and industrial facilities which impacted natural areas and in particular the humid zones in the south. Poor waste management created pollution and lead to a loss of biological diversity.

2. Fo



• Has a multi
• What is the (1.1)
• What is the
• What is the regional ne
• What is the
• What is the restorior
• What is the
• What is the
• What is the communitie

Threat 2: Inappropriate cultural practices

Benin economy relies essentially on agriculture. This sector employs 70% of the active population, contributes for 40 % to GDP and assures 80% of the exportations. Unfortunately the main production system, slash and burn agriculture, largely destroys micro-organisms and the organic content of the soil. With the increase of the population, the fallow period has been reduced, especially in the south. The increase in agricultural production from one year to another is explained by an increase in the surface cultivated rather than in productivity.

In North, cotton cultivation which uses chemical pesticides and fertilizers and yam cultivation engender vegetation degradation, soil and water pollution, and a worrying concentration of chemical products in vegetal and animal tissues.

As a consequence of these bad agricultural practices, fauna habitat is being fragmented, biodiversity resources are degraded and there is an important pollution of the ecosystems.

Exercise – Prioritization

Worksheet for PoWPA Action Planning and Implementation

1. Background elements of a PoWPA Action Plan:

Background Elements	Status
• Background and context	
• Linkages to other national and regional plans	
• Description of threats to protected areas	
• Information about the current protected area system	

2. For each element of the PoWPA, identify the status, the priority the timeline and budget:



Key Assessments	Status	Priority	Timeline	Budget
• Has a multi-stakeholder advisory committee been formed?				
• What is the progress on assessing gaps in the protected area network? (1.1)				
• What is the progress in assessing protected area integration? (1.2)				
• What is the progress in establishing transboundary protected areas and regional networks? (1.3)				
• What is the progress in developing site-level management plans? (1.4)				
• What is the progress in assessing threats and opportunities for restoration? (1.5)				
• What is the progress in assessing equitable sharing of benefits? (2.1)				
• What is the progress in assessing protected area governance? (2.1)				
• What is the progress in assessing the participation of indigenous and local communities in key protected area decisions? (2.2)				

Exercise – Prioritization

Worksheet for PoWPA Action Planning and Implementation

1. Background elements of a PoWPA Action Plan:

Background Elements	Status
• Background and context	
• Linkages to other national and regional plans	
• Description of threats to protected areas	
• Information about the current protected area system	

2. For each element of the PoWPA, identify the status, the priority the timeline and budget:



Key Assessments	Status	Priority	Timeline	Budget
• Has a multi-stakeholder advisory committee been formed?	Y			
• What is the progress on assessing gaps in the protected area network? (1.1)	4	---	---	
• What is the progress in assessing protected area integration? (1.2)	2	VH	12/11	50K
• What is the progress in establishing transboundary protected areas and regional networks? (1.3)	2	H	10/11	5K
• What is the progress in developing site-level management plans? (1.4)	1	L	10/12	85K
• What is the progress in assessing threats and opportunities for restoration? (1.5)				
• What is the progress in assessing equitable sharing of benefits? (2.1)				
• What is the progress in assessing protected area governance? (2.1)				
• What is the progress in assessing the participation of indigenous and local communities in key protected area decisions? (2.2)				

www.cbd.int/protected/implementation



NATIONAL PROFILE ON THE IMPLEMENTATION OF THE PROGRAMME OF WORK ON PROTECTED AREAS

COUNTRY:	(NAME OF COUNTRY)		
Name of person completing survey:	(NAME)		
Email address of person completing survey:	(EMAIL)		
Date survey completed:	(DATE)		
Please briefly describe who was involved in gathering information for this survey	(NAMES AND ORGANIZATIONS)		
1) Has a multi-stakeholder advisory committee been formed to implement the PoWPA?	(YES/NO)		
2) Is there an action plan for implementing the PoWPA?	(YES/NO)		
3) If yes, please provide a URL (or attach a pdf) of the strategic action plan:	(URL OR ATTACHMENT)		
4) If yes, which is the lead agency responsible for implementing the strategic action plan?	(AGENCY NAME)		
5) If not, are the PoWPA actions included in other biodiversity-related action plans? (Please provide a URL or attachment if so)	(URL or ATTACHMENT)		

1.1 To establish and strengthen national and regional systems of protected areas integrated into a global network as a contribution to globally agreed goals

1) What progress has been made in assessing the representativeness, comprehensiveness and ecological gaps of your protected area network?	(STATUS: 0-4)			
2) If available, please indicate the URL (or attach a pdf) of the gap assessment report:	(URL OR ATTACHMENT)			
3) Do you have specific targets and indicators for the protected area system?	(YES/NO)			
4) If yes, please provide a URL (or attach a pdf) of the targets and indicators:	(URL OR ATTACHMENT)			
5) What actions have been taken to improve the ecological representativeness of the protected area network? Please check all that apply, and provide a brief description:				
√	ACTION	BEFORE 2004	BETWEEN 2004 - 2009	SINCE 2010
	Created new protected area/s			
	Promoted an array of different types of protected areas (e.g.,			

Exercise – implementation plan

Gap Assessment

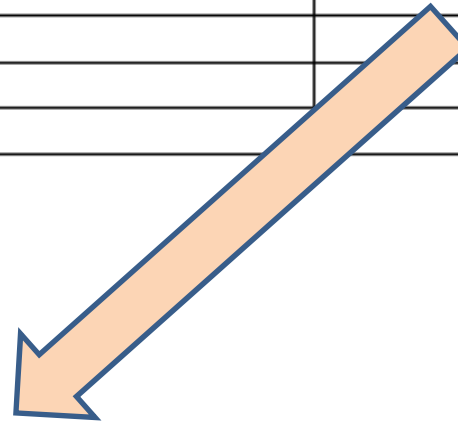
Major Steps – Gap Assessment	Who	When	Timeline	Budget
• Select key focal species and ecosystems				
• Assess distribution and viability of biodiversity				
• Set goals for each key species				
• Create map of protected area boundaries				
• Identify key gaps				
• Communicate gaps to key decision makers				

- For at least one high-priority action, develop an implementation plan for completing the action

Exercise

Gap Assessment

Major Steps – Gap Assessment	Who	When	Timeline	Budget
• Select key focal species and ecosystems				
• Assess distribution and viability of biodiversity				
• Set goals for each key species				
• Create map of protected area boundaries				
• Identify key gaps				
• Communicate gaps to key decision makers				



MoE staff

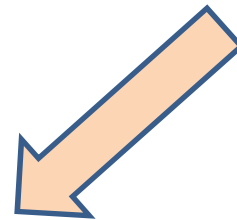
Aug – Sep
2011

7 days

Exercise

Gap Assessment

Major Steps – Gap Assessment	Who	When	Timeline	Budget
• Select key focal species and ecosystems				
• Assess distribution and viability of biodiversity				
• Set goals for each key species				
• Create map of protected area boundaries				
• Identify key gaps				
• Communicate gaps to key decision makers				



Communication
specialist

Sep – Dec
2012

30 days

Relationship between PoWPA elements, assessment results, implementation plans

PoWPA element	Assessment result	Implementation plan
Ecological gap assessment	Wetlands under-protected	Protect more wetlands

Relationship between PoWPA elements, assessment results, implementation plans

PoWPA element	Assessment result	Implementation plan
Ecological gap assessment	Wetlands under-protected	Protect more wetlands
Capacity assessment	Not yet conducted	Conduct assessment

PoWPA Implementation and Action Planning Module

SmartBuilder Player - Google Chrome
https://www.conservationtraining.org/file.php/66/moddata/scorm/558/scorm.html

Lesson 1: Protected Area Implementation

Convention on Biological Diversity

Introduction

Learning Key Terms

- Welcome
- Introduction
- Protected Area Focal Points
- Multi-Sectoral Committees
- Strategic Master Plan
- Regional Approach
- Funding
- Political Will

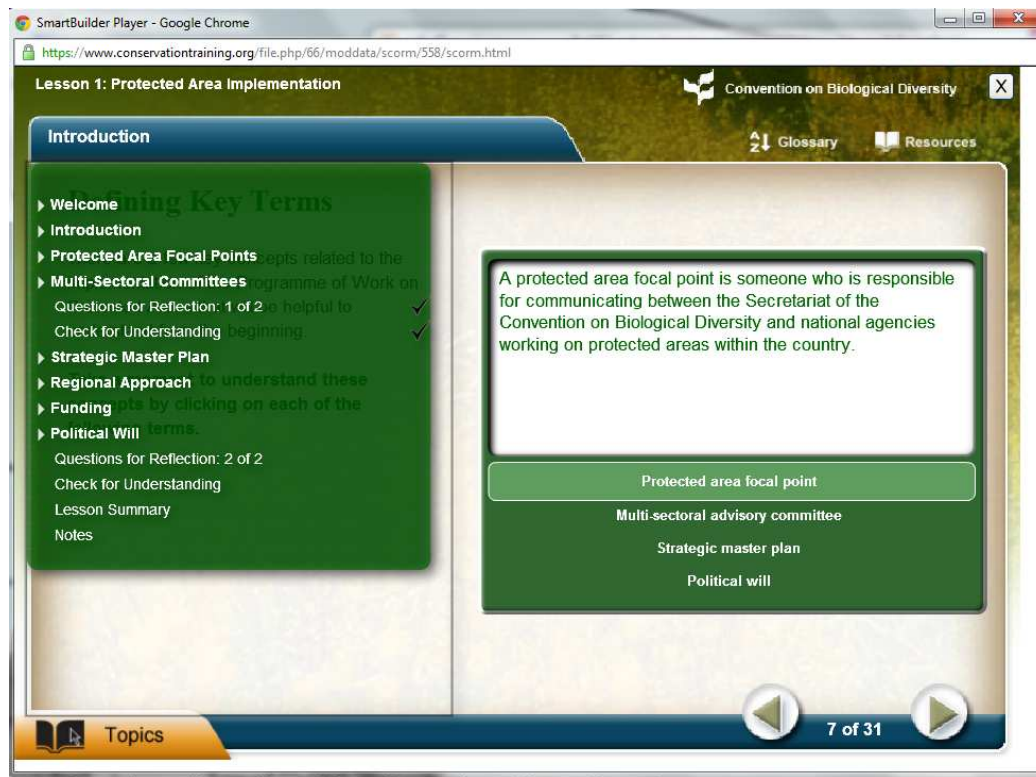
A protected area focal point is someone who is responsible for communicating between the Secretariat of the Convention on Biological Diversity and national agencies working on protected areas within the country.

Protected area focal point
Multi-sectoral advisory committee
Strategic master plan
Political will

Topics 7 of 31

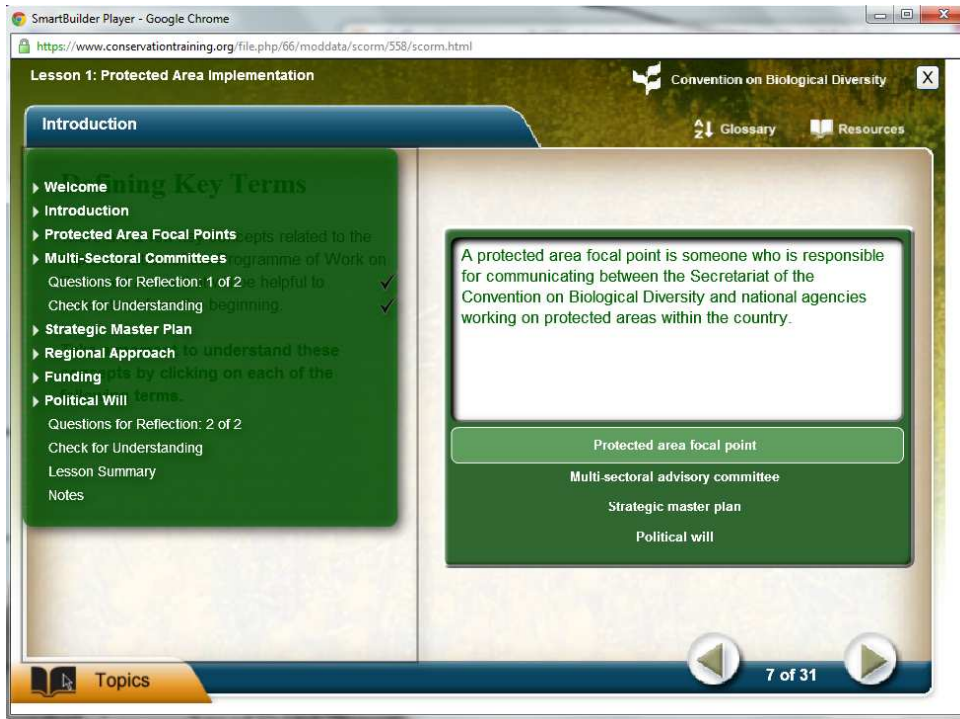
- Role of CBD PoWPA Focal Points
- Establishing a multi-sectoral advisory committee
- Developing a PoWPA Action Plan

Instructions for loading the implementation module



1. Open CD folder to 'E-lessons'
2. Click on 'Implementation' twice
3. Then copy either French or English version to your computer
4. Click on 'player'

INSTRUCTIONS



**Take Implementation Module:
Lesson 1 (slides 17-21)**

Worksheet for PoWPA Action Planning and Implementation

Key Assessments	Status	Priority	Timeline
• Has a multi-stakeholder advisory committee been formed to help implement the PoWPA ? (1.1)			
• What is the progress on assessing ecological gaps in the protected area network? (1.2)			
• What is the progress in assessing spatial and sectoral protected area integration ? (1.2)			
• What is the progress in establishing transboundary protected areas and regional networks? (1.3)			
• What is the progress in developing site-level management plans ? (1.4)			
• What is the progress in assessing threats and opportunities for mitigation and restoration ? (1.5)			
• What is the progress in assessing equitable sharing of protected area benefits? (2.1)			
• What is the progress in assessing protected area governance ? (2.1)			
• What is the progress in assessing the participation of indigenous and local communities in key protected area decisions? (2.2)			
• What is the progress in assessing the policy environment for establishing and managing protected areas? (3.1)			
• What is the progress in assessing the social and economic value of protected areas? (3.1)			
• What is the progress in assessing protected area			

Then complete worksheet

