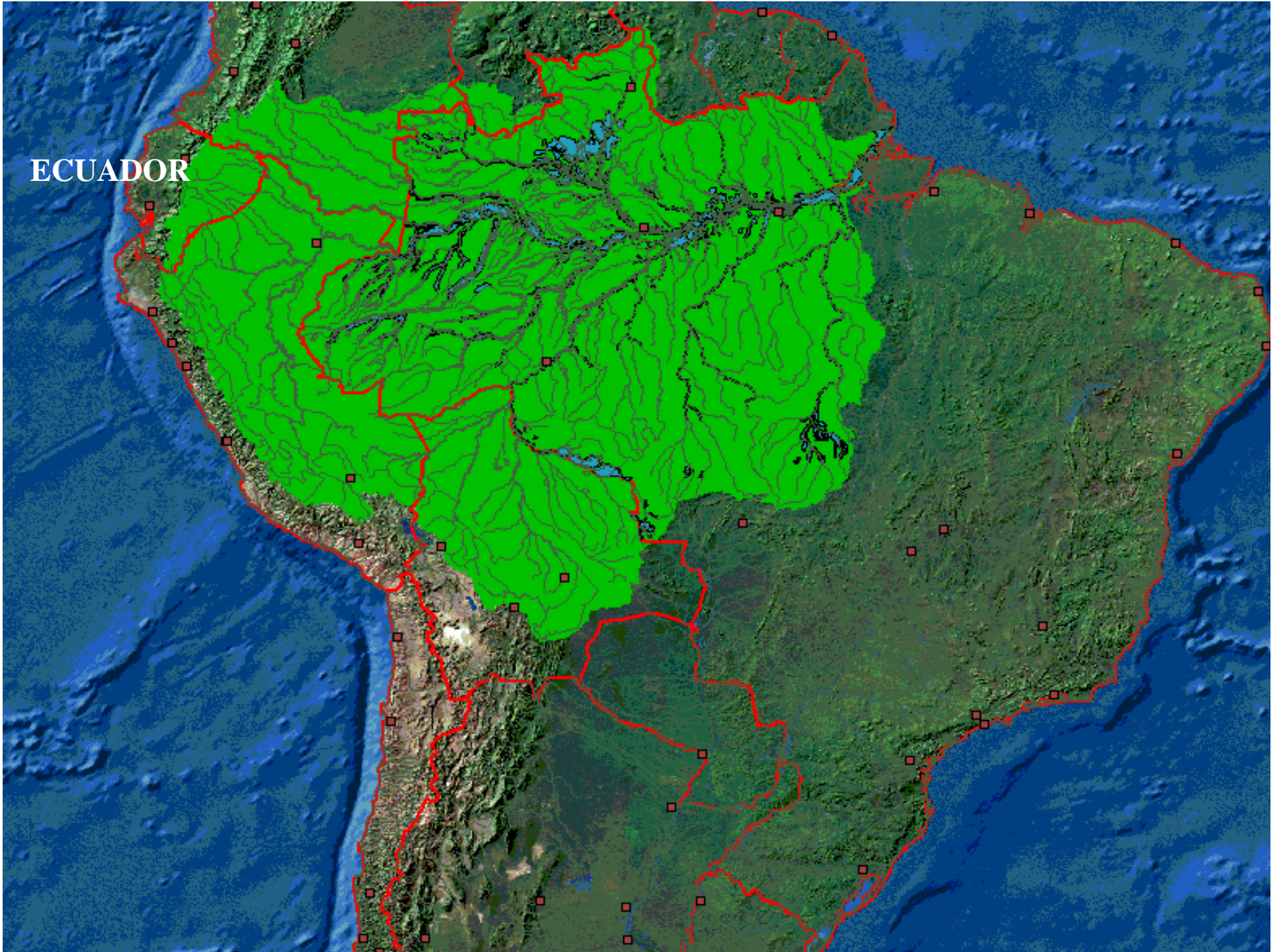
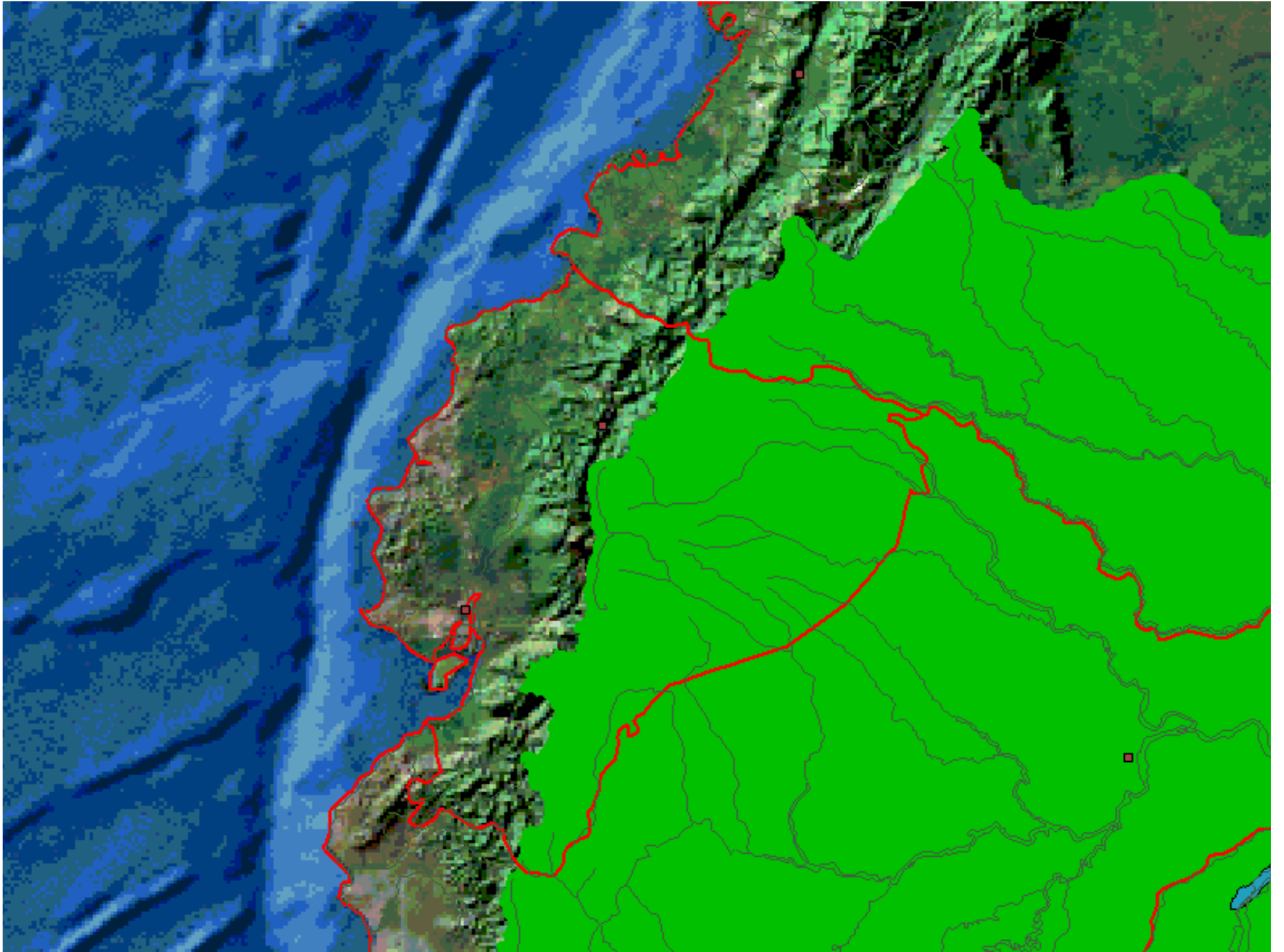




Fonag  
abril de 2011

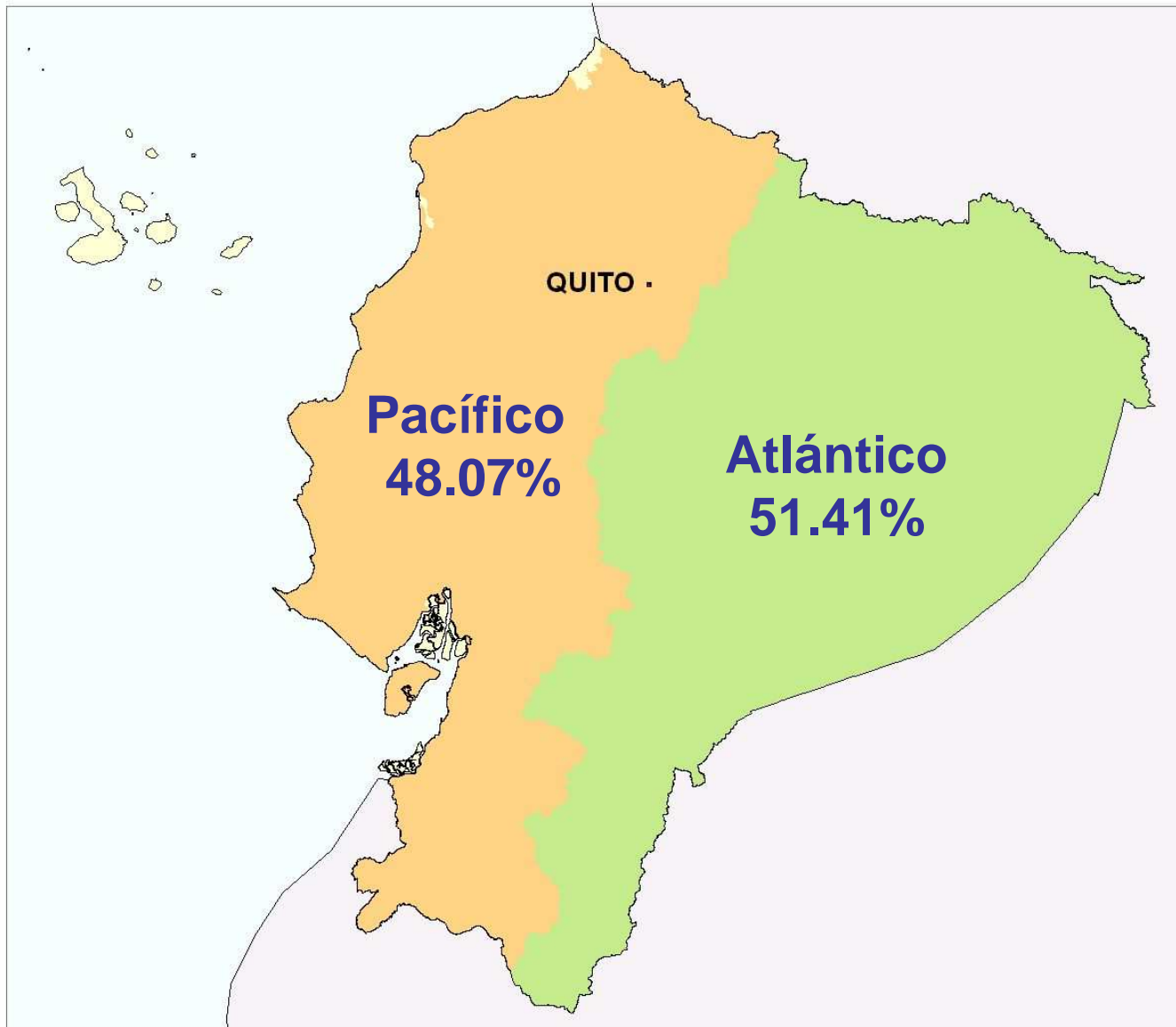
ECUADOR





- **Sistemas Hídricos**

---



Fuente: UDA

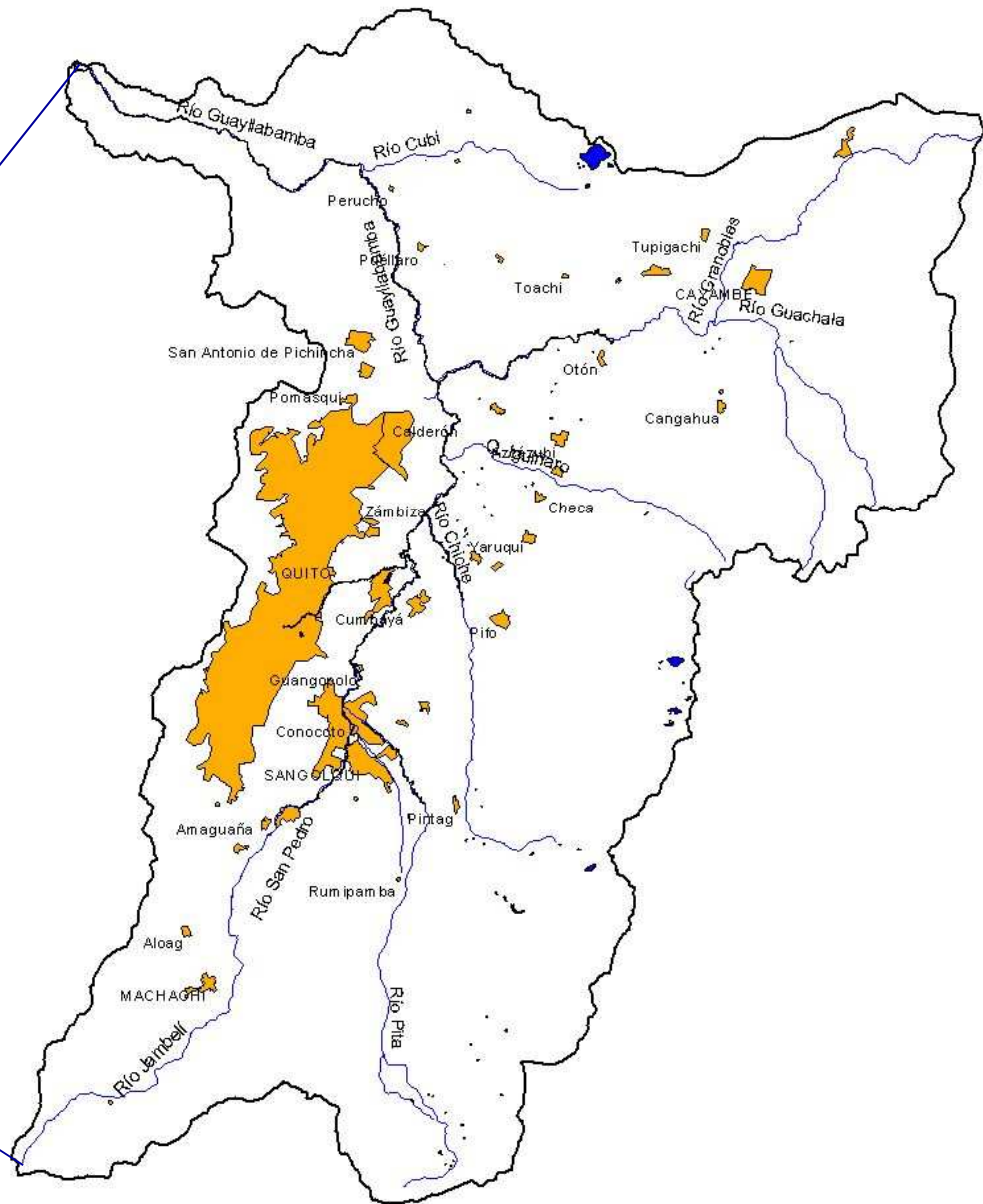
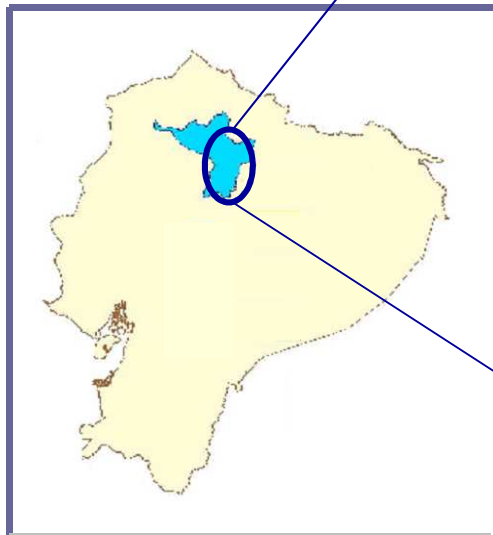


Provincia de Pichincha

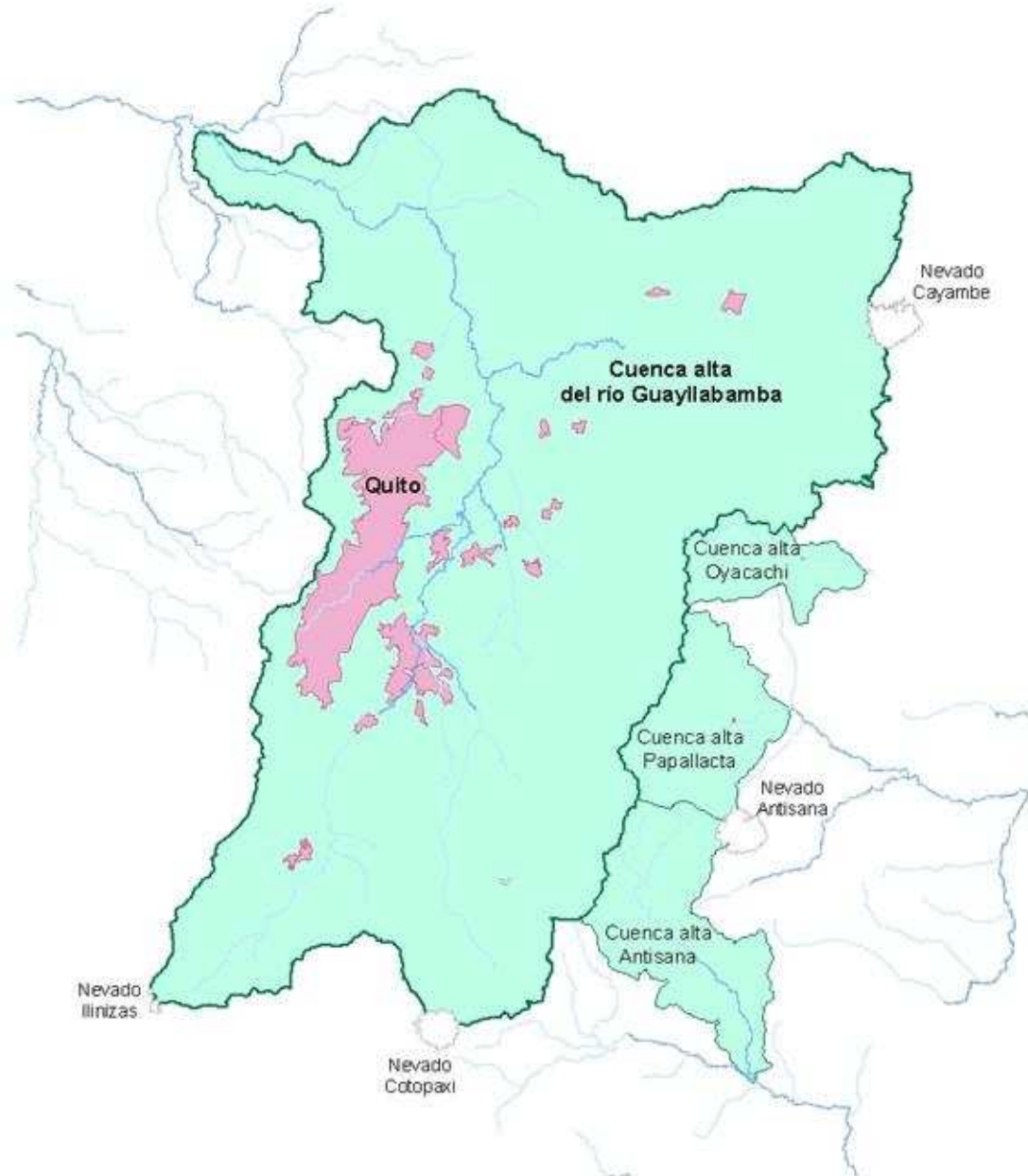
Cuenca alta del río Guayllabamba

# Cuenca alta del río Guayllabamba

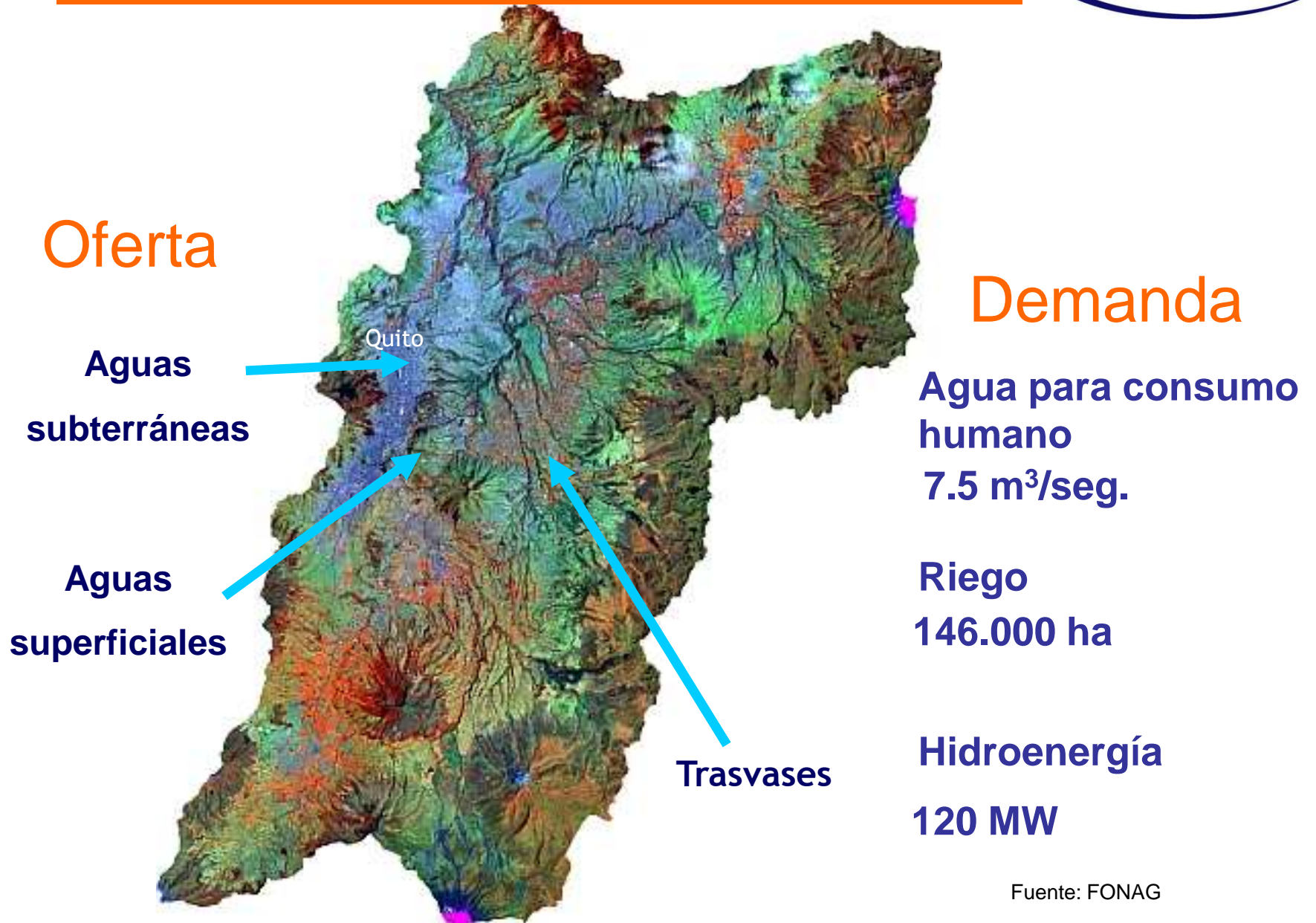
Área total: 4.707 Km<sup>2</sup>  
Alt. min: 1.000 m  
Alt. max: 5.893 m  
Pob: ~2.378.000 hab



## Ámbito de trabajo FONAG



# • Recursos hídricos



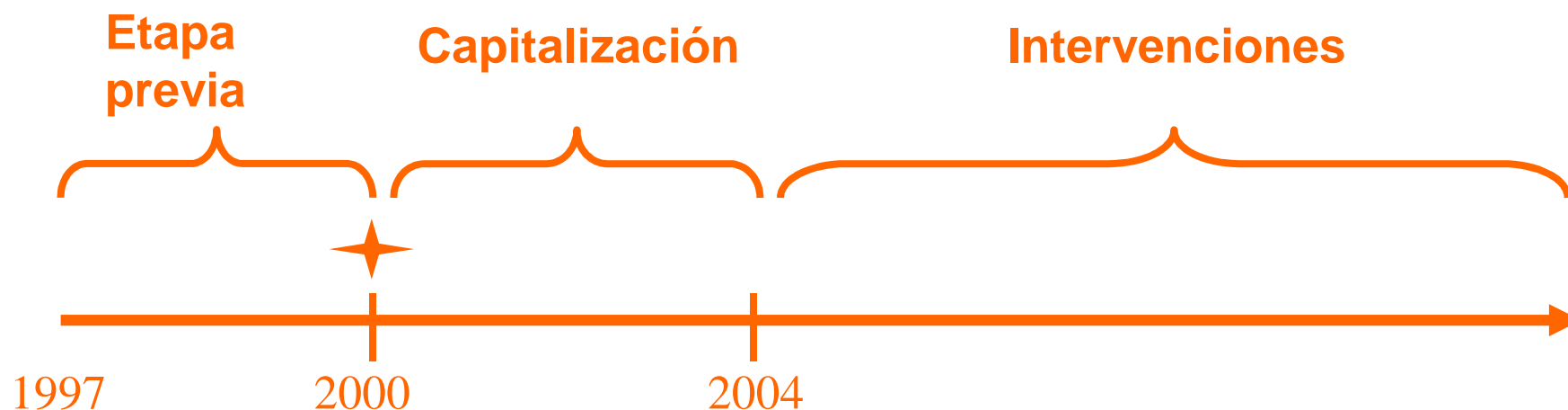
Fuente: FONAG



# Desarrollo



- Ante la problemática del agua en los 80' y mediados de los 90', surge la idea de crear un mecanismo financiero destinado a su cuidado.
- En el 2000 se constituye un fondo patrimonial creciente a través de un fideicomiso mercantil para el cuidado del agua.



Fuente: FONAG

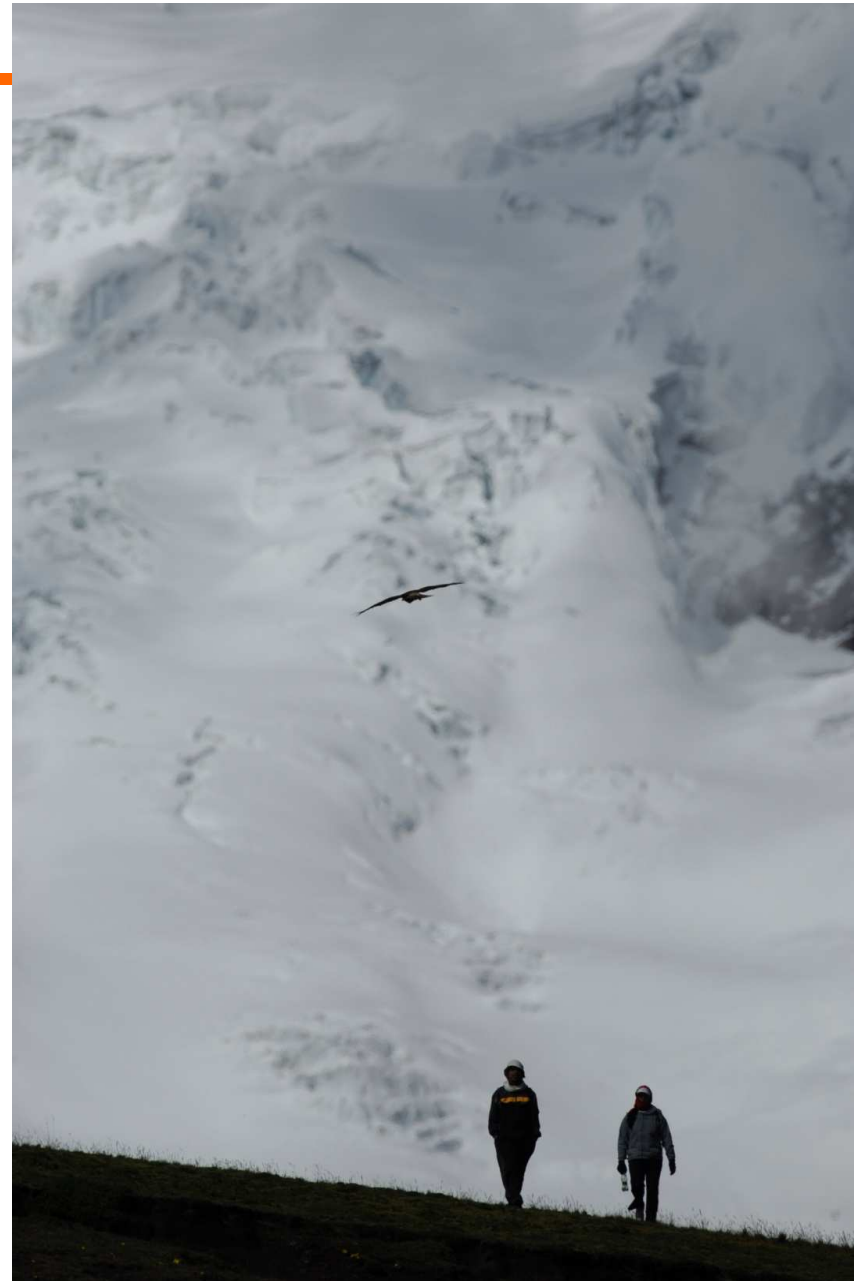
# Socios del fondo



# Líneas de trabajo

---

- Creación de una “cultura del agua” tendiente a conseguir una “Gestión Integrada del Agua”.
- Intervenciones (Programas y Proyectos)



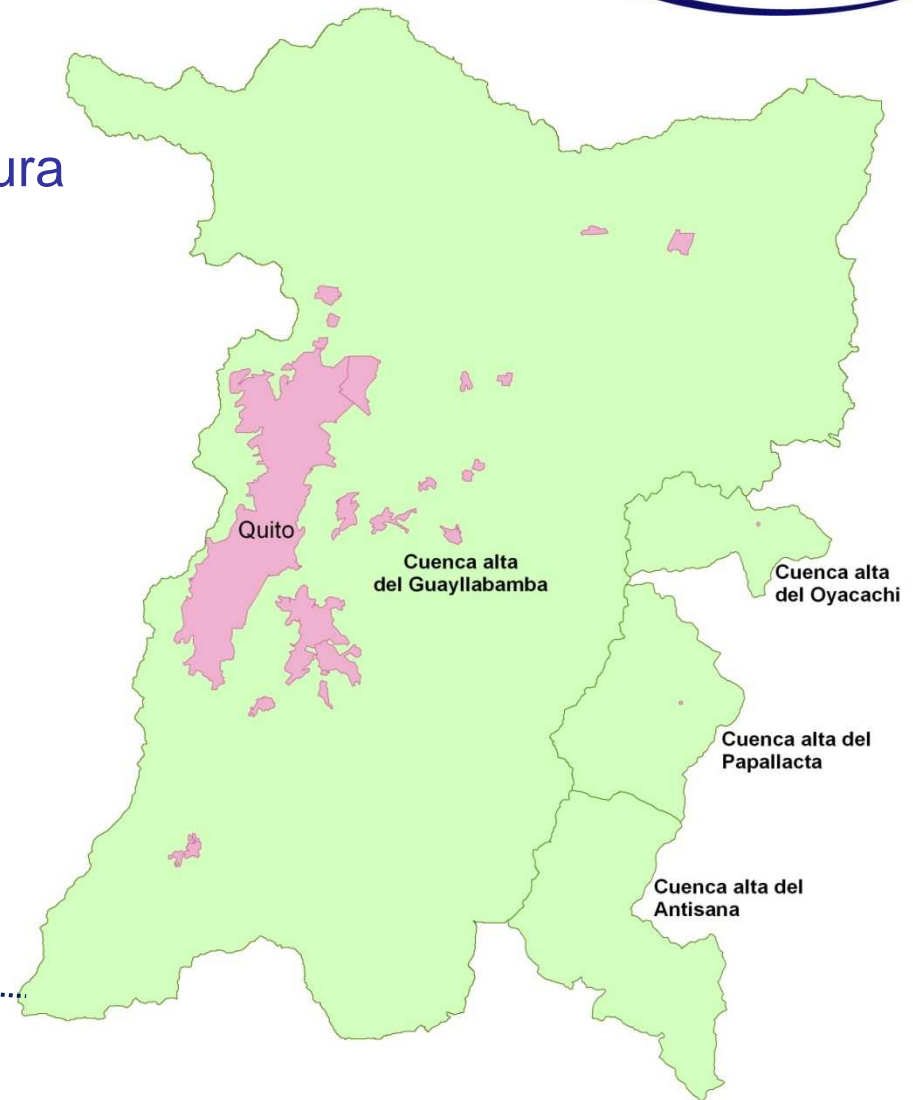
# Destino de la Inversión



## a) Programas 80%

1. Recuperación de cobertura vegetal
2. Vigilancia de áreas protegidas
3. Educación ambiental
4. Comunicación
5. Capacitación
6. Gestión del Agua

## b) Proyectos (20%)

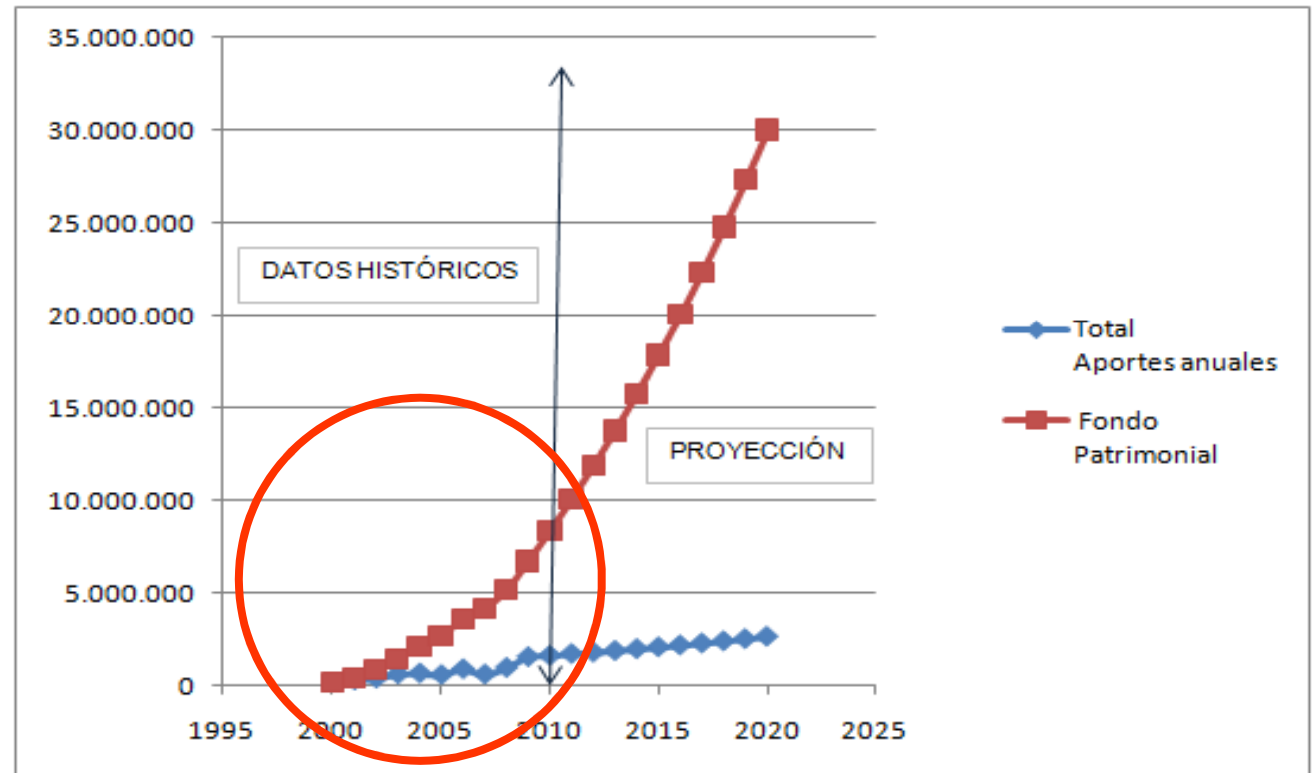


# Crecimiento del Fondo



## Datos históricos

Años	Fondo Patrimonial
2000	164.046
2001	443.502
2002	837.111
2003	1.450.053
2004	2.112.553
2005	2.693.451
2006	3.588.513
2007	4.193.782
2008	5.162.205
2009	6.724.847
2010	8.356.291
<b>2011</b>	<b>10.086.849</b>

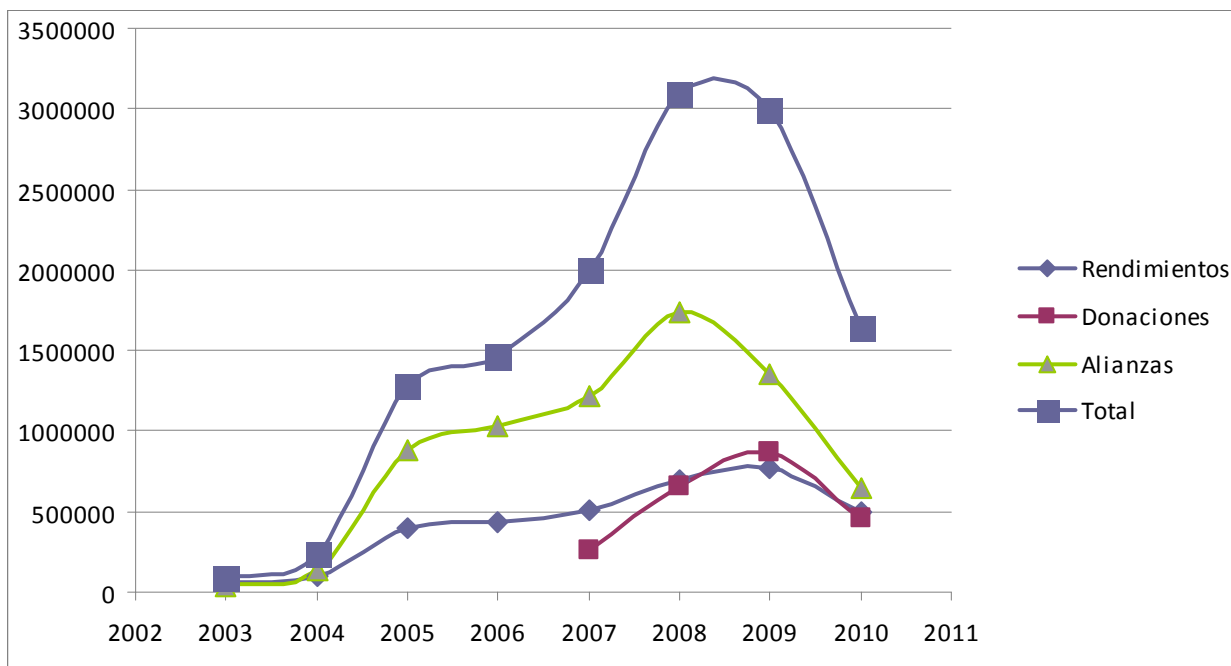


## Relación fondos propios vrs. contrapartes



Año	Rendimientos	Donaciones	Alianzas	Total	Relación
2003	59.984		31.750	91.734	2
2004	103.550		136.150	239.700	2
2005	402.810		876.000	1.278.810	3
2006	433.356		1.035.000	1.468.356	3
2007	506.238	266.211	1.221.300	1.993.749	4
2008	696.620	663.866	1.732.000	3.092.486	4
2009	771.696	864.501	1.358.400	2.994.597	4
2010	496.041	460.350	647.000	1.643.391	3
Acumulado	<b>3.470.295</b>	2.254.928	7.037.600	<b>12.802.823</b>	4
<b>Relación</b>	<b>1</b>	<b>1</b>	<b>2</b>	<b>4</b>	

# Relación fondos propios vrs. contrapartes

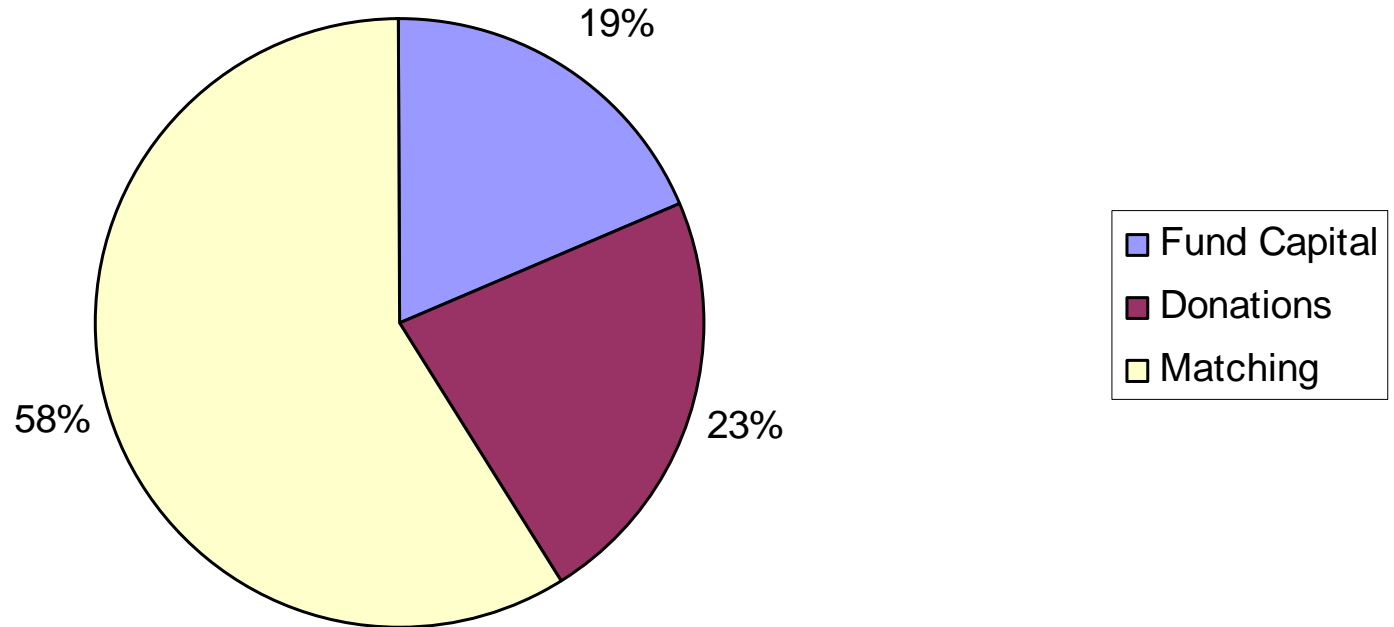


Total	Relación
91.734	2
239.700	2
1.278.810	3
1.468.356	3
1.993.749	4
3.092.486	4
2.994.597	4
1.643.391	3
<b>12.802.823</b>	<b>4</b>
<b>4</b>	

# Relación fondos propios vrs. contrapartes



**Total \$ Generated to Protect Quito's Watershed**



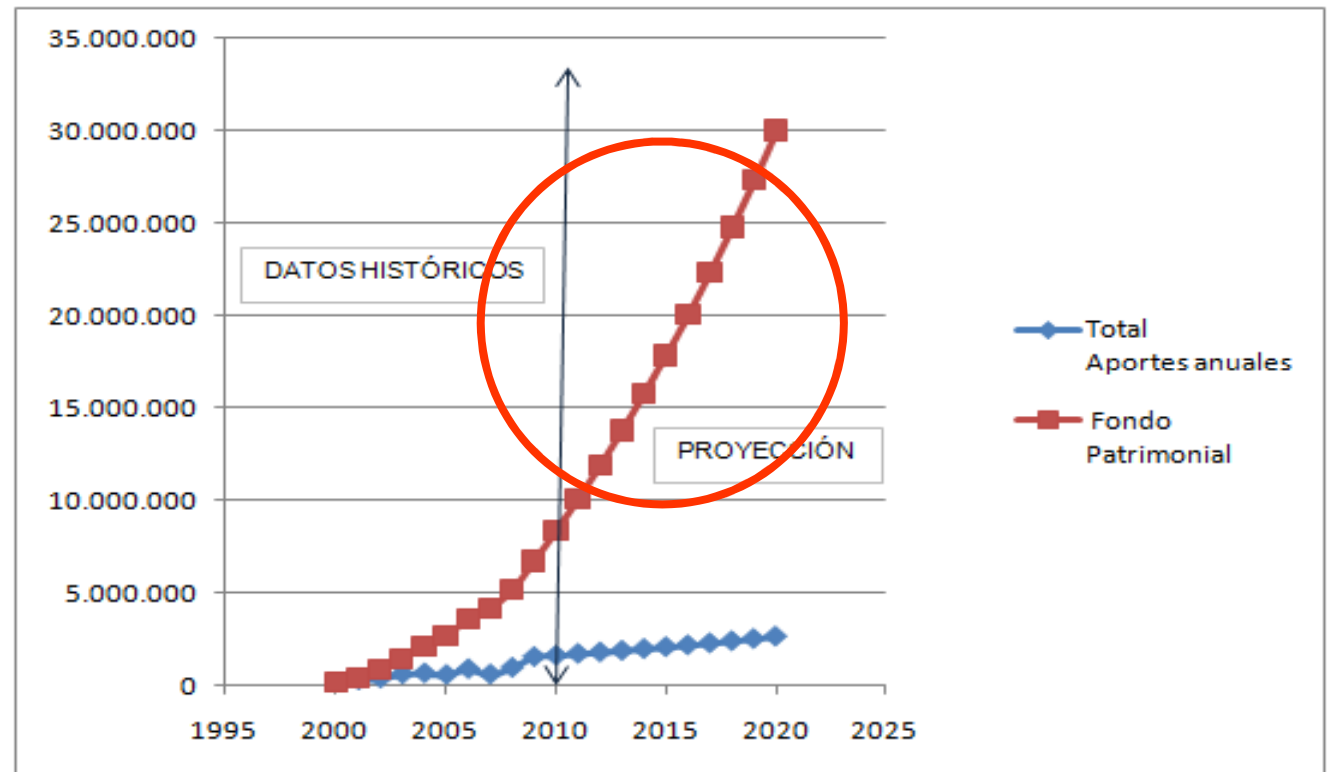


# Proyección del Fondo



## Proyección

Años	Fondo Patrimonial
2011	10.086.849
2012	11.894.949
2013	13.793.454
2014	15.786.884
2015	17.879.986
2016	20.077.743
2017	22.385.388
2018	24.808.414
2019	27.352.593
<b>2020</b>	<b>30.023.980</b>



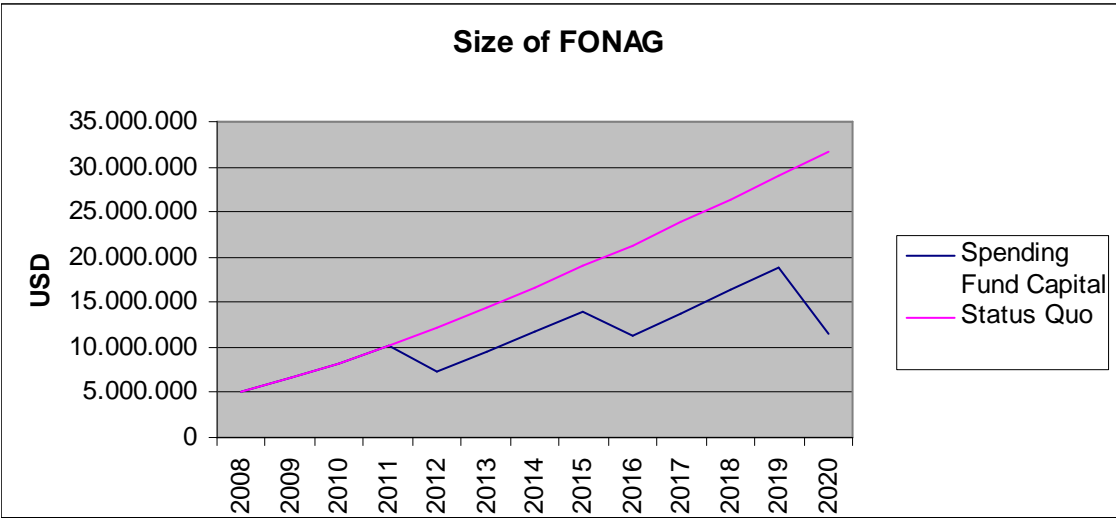


## FONAG

### Profit and Loss Account

<i>For the Fiscal Year Ended December, 31,</i>									
	0	1	2	3	4	5	6	7	
<b>USD millions</b>	2008	2009	2010	2011	2012	2013	2014	2015	2016
Outreach & Education	43.133	53.356	66.891	82.856	59.325	77.098	95.390	114.217	92.794
Reforestation	185.060	229.746	288.024	356.767	255.446	331.975	410.739	491.804	399.561
Training	0	0	0	0	0	0	0	0	0
Hydrological	47.197	58.378	73.187	90.654	64.908	84.354	104.368	124.967	101.528
Communication	45.425	56.495	70.826	87.729	62.815	81.633	101.001	120.935	98.253
Opportunistic Programs	106.666	132.449	166.047	205.677	147.265	191.384	236.792	283.527	230.348
<b>Total</b>	<b>505.628</b>	<b>627.722</b>	<b>786.952</b>	<b>974.772</b>	<b>697.940</b>	<b>907.035</b>	<b>1.122.237</b>	<b>1.343.728</b>	<b>1.091.696</b>
<b>Total Costs</b>	<b>661.364</b>	<b>809.807</b>	<b>976.320</b>	<b>1.171.715</b>	<b>900.791</b>	<b>1.115.972</b>	<b>1.337.442</b>	<b>1.565.389</b>	<b>1.320.007</b>
<b>Earnings Before Taxes</b>	<b>-116.005</b>	<b>-25.154</b>	<b>7.370</b>	<b>46.750</b>	<b>-28.366</b>	<b>17.822</b>	<b>65.354</b>	<b>114.271</b>	<b>44.613</b>
<b>Taxes</b>	<b>35.256</b>	<b>0</b>	<b>221</b>	<b>1.403</b>	<b>0</b>	<b>535</b>	<b>1.961</b>	<b>3.428</b>	<b>1.338</b>
<b>Profit/ Loss</b>	<b>-151.261</b>	<b>-25.154</b>	<b>7.149</b>	<b>45.348</b>	<b>-28.366</b>	<b>17.287</b>	<b>63.394</b>	<b>110.843</b>	<b>43.275</b>

# Tamaño del fondo ? Escenarios



2012	2013	2014	2015	2016	2017	2018	2019	2020
7.270.205	9.448.285	11.689.968	13.997.162	11.371.831	13.816.000	16.331.754	18.921.241	11.583.423
12.270.205	14.448.285	16.689.968	18.997.162	21.371.831	23.816.000	26.331.754	28.921.241	31.583.423



Muchas gracias