

# FSM Vulnerability & Adaptive Assessment







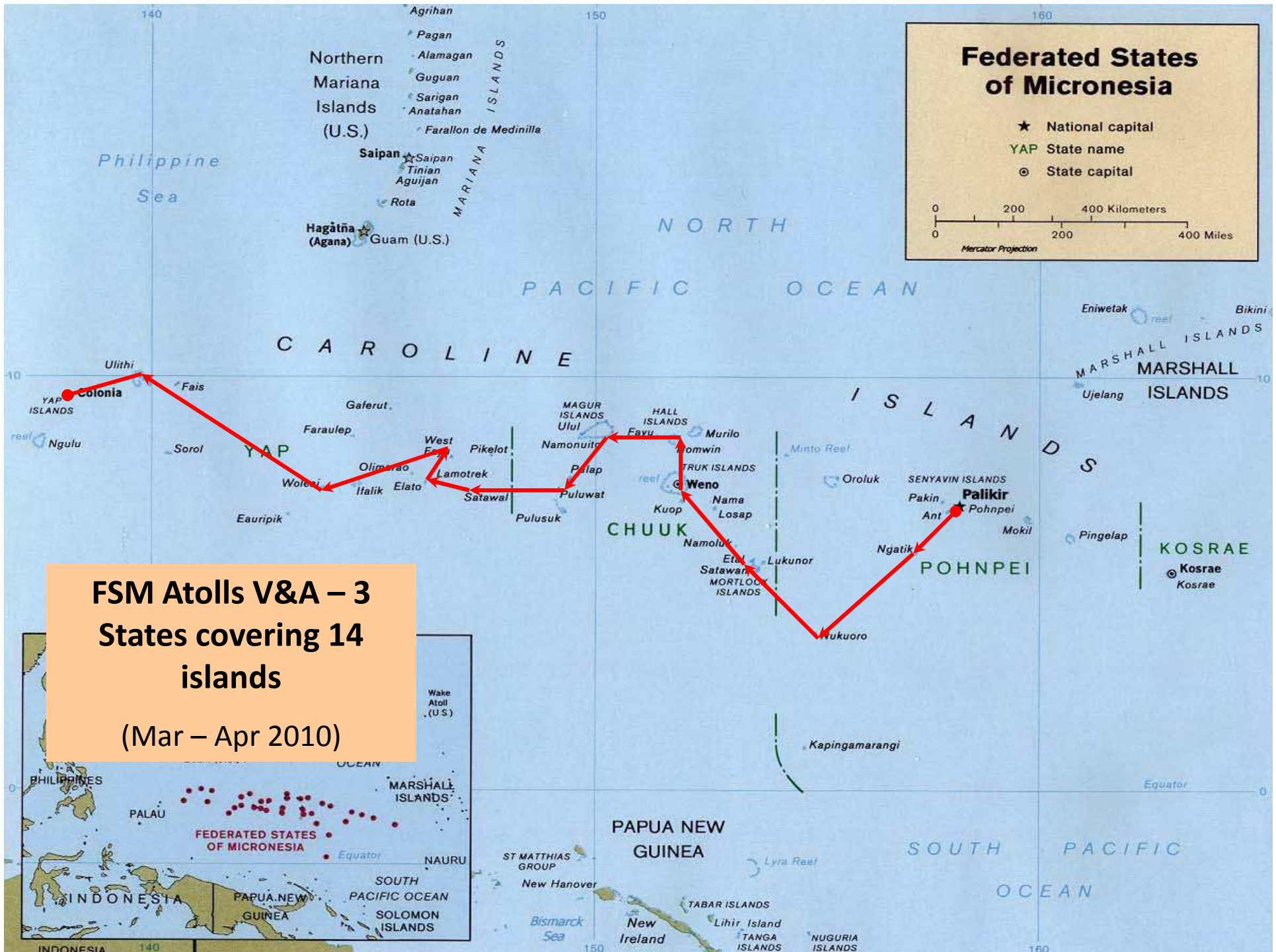




**Scale of Problem**

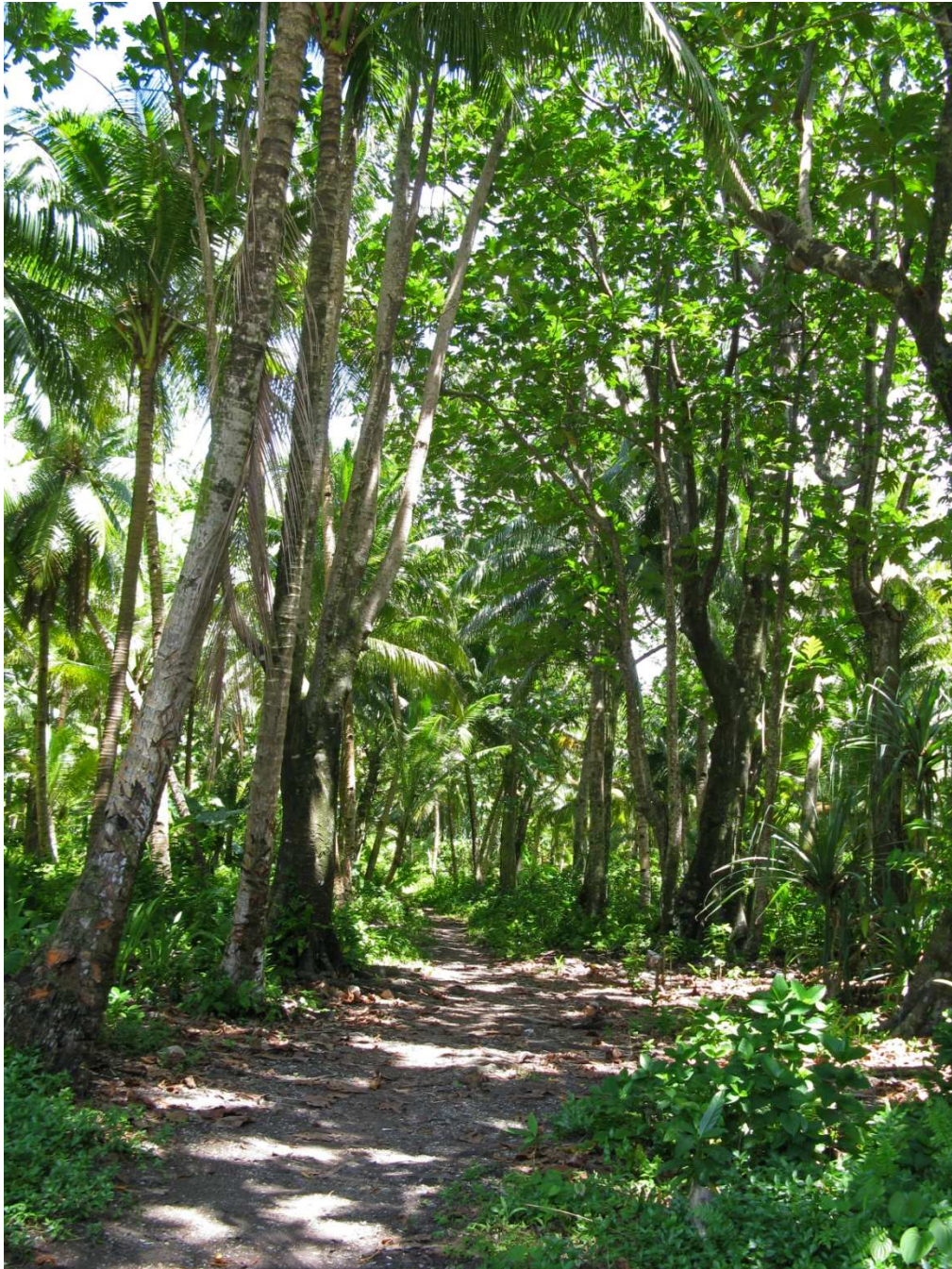


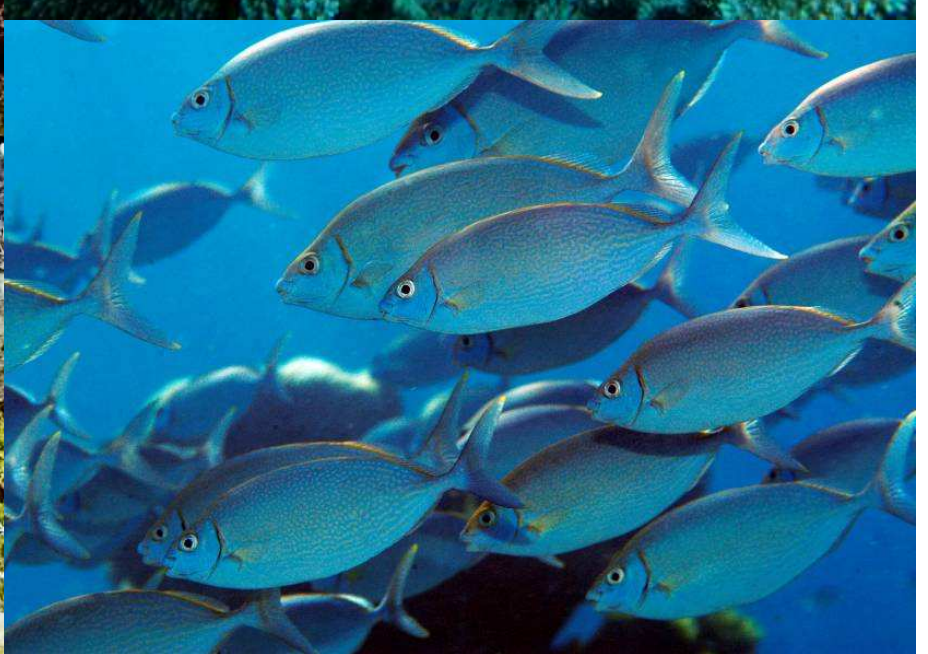
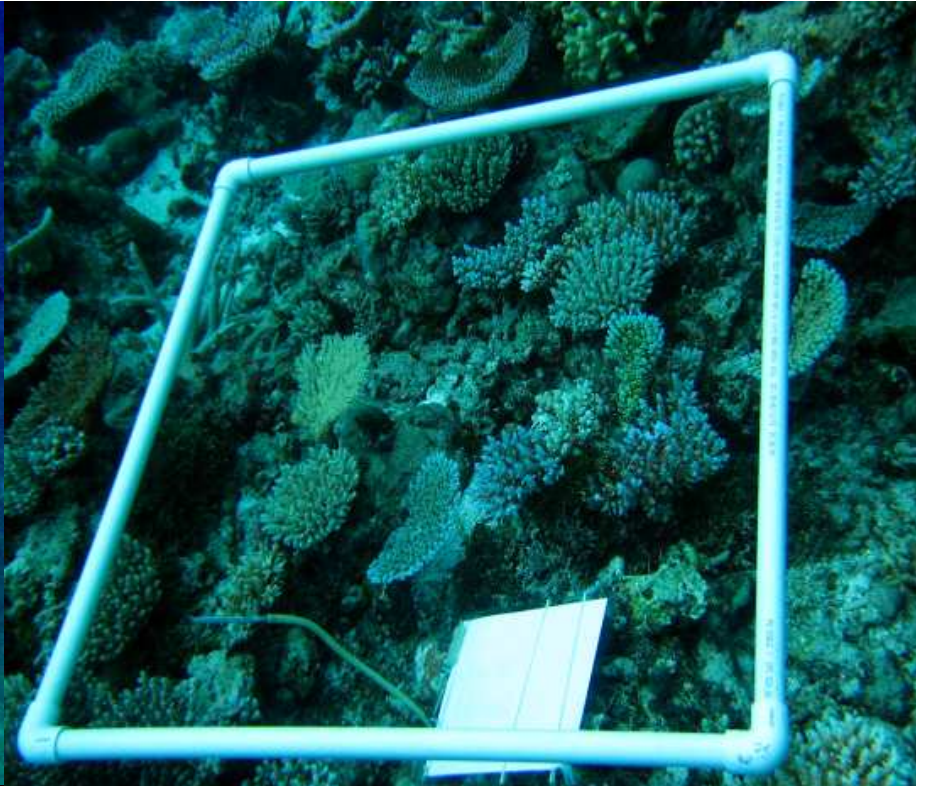


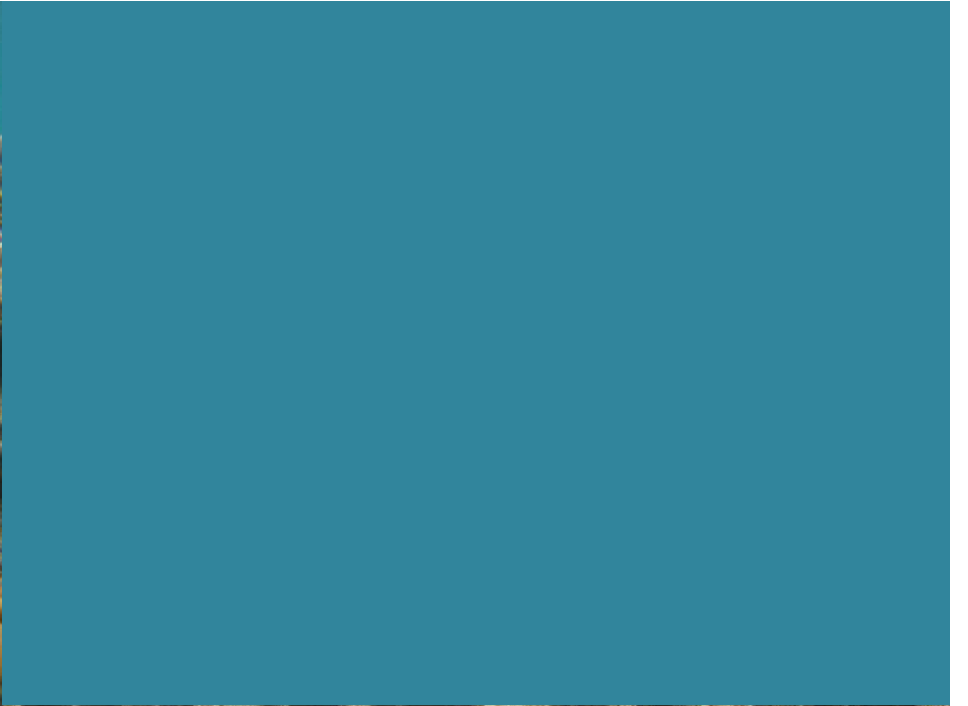














# Other Hidden Causes



A vibrant rainbow arches across a cloudy sky, its colors transitioning from red on the left to violet on the right. Below the rainbow, the sea is dark and choppy, with small waves visible. The horizon line is straight and divides the image roughly in half.

**Thank you  
Kulo  
Kalahngan  
Kilisou  
Kamagar**