



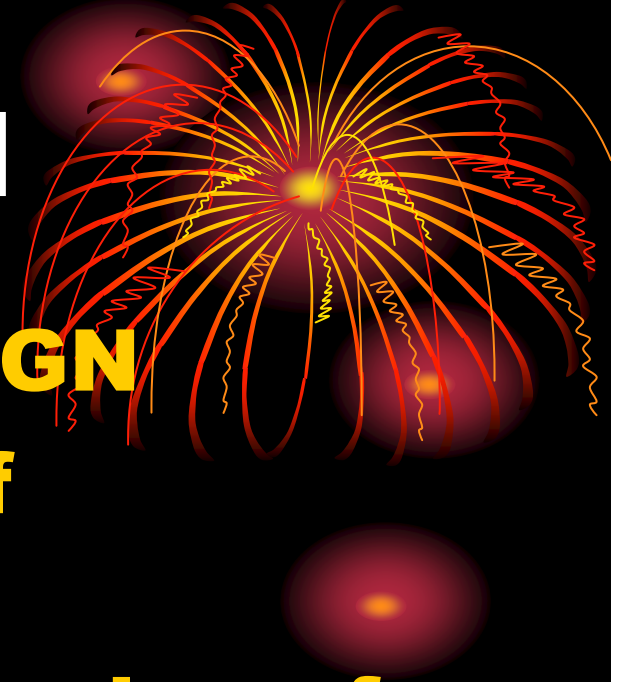
**PRESENTATION OF
CENTRAL AFRICAN
BOTANIC GARDENS AND
ARBORETA NETWORK
(CABGAN)**

BY

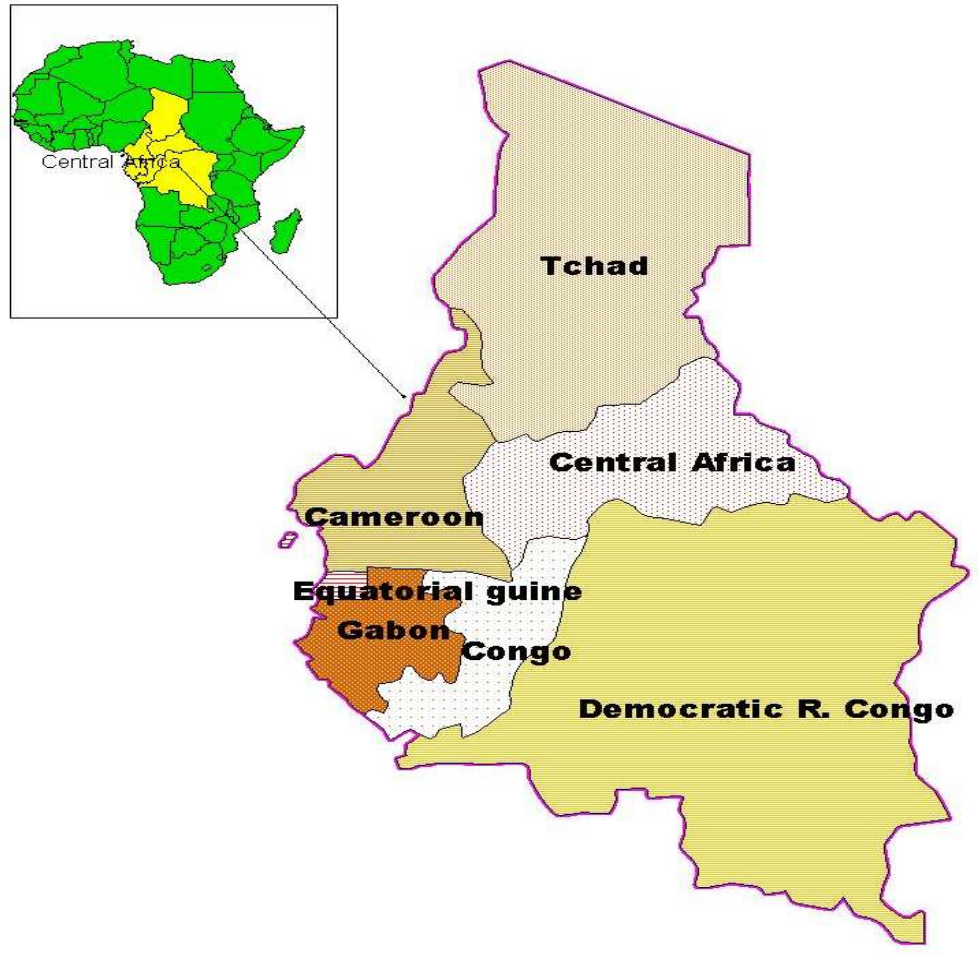
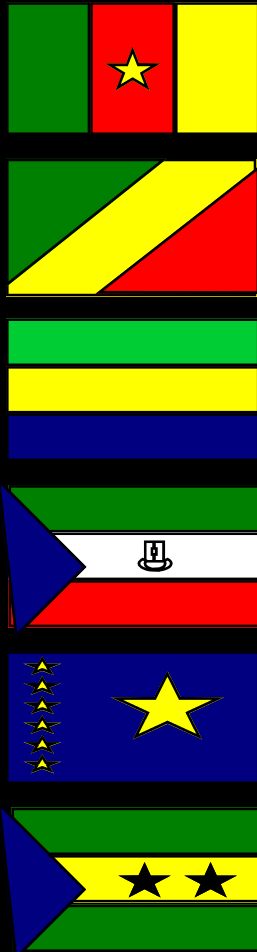
**The LIMBE BOTANIC GARDEN
DELEGATION**

WHAT IS CABGAN

- **Sub regional arm of ABGN**
- **A possible beginning of CONGONET**
- **A potential network member of the Association French speaking Botanic Gardens of the World**
- **Regional promoter of cultural heritage in favour of BD conservation and ecotourism**



GEOGRAPHICAL LIMIT



MISSION and VISION

- **MISSION**

To support biodiversity conservation and cultural heritage in the Congo Basin.

- **VISION**

By year 2010, CABGAN will be a regionally recognized partner in the conservation of biodiversity and promotion of the cultural heritage in the Congo Basin.



ACTIVITIES

- **One Conference held in Limbe in 2003**
- **Second planned for Libreville, still pending due lack of funds**
- **Major outcome of the Limbe Conference**
- **Proposed guiding principles of CABGAN**
- **5 major areas of operation**



The 5 Major Areas of Operation



- **Documentation of national & regional Plant Diversity**
- **Conservation of Plant Diversity (*Inter-situ*)**
- **Sustainable Use of Plant Diversity & Equitable Benefit Sharing (promote CBD-ABS implementation)**
- **Promotion of Education and Culture in favour of Plant diversity Conservation**
- **Capacity building in conservation**
- **16 targets were setup within these 5 major areas to be achieved by member gardens and arboreta.**

The CBD in Practice: Ideas and Examples of Implementation in Botanic Gardens



Workshop coordinated by Botanic Gardens Conservation International and the Royal Botanic Gardens, Kew 18 April 2004, World Botanic Gardens Congress, Barcelona



The Convention on Biological Diversity

represents a commitment by nations to:

- Conserve biological diversity
- Use biological resources sustainably
- Share benefits arising from the use of genetic resources fairly and equitably

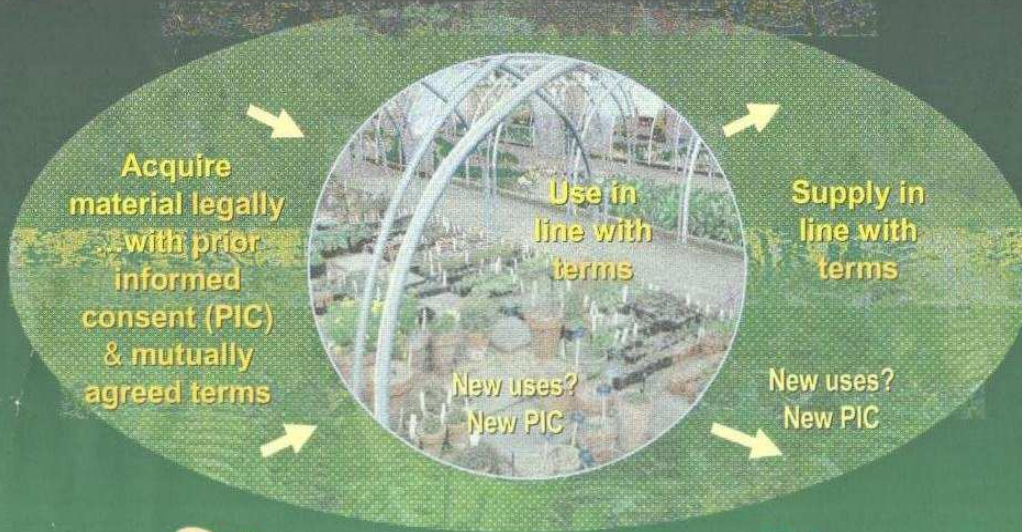


Implementation



Use written agreements

(e.g. permits, letters, memoranda of understanding, material transfer agreements...) to set out **prior informed consent** and **mutually agreed terms** for use, transfer, benefit-sharing



Share benefits

Botanic gardens can share many benefits...

Citing sources of material

Educational tools & training materials

Reintroduction programmes

Staff exchange

Donating equipment

Donating equipment

Name verification

Donating equipment

Shared research and publications

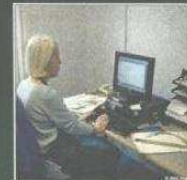
Propagation protocols

Propagation protocols

Photos, publicity, awareness-raising

Training and workshops

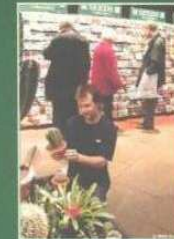
Fundraising



Use **tracking systems** (databases, logbooks, labels) to record **terms** for use, transfer, benefit-sharing



Use **supply agreements** to set out terms for material leaving the collection



Plant sales

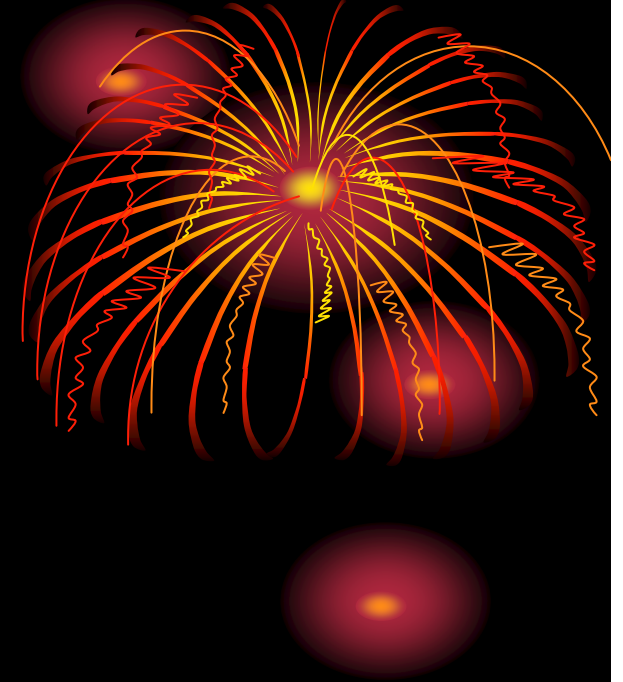
Check **terms** – may need PIC of country of origin. Communicate **terms** to buyers

Please contribute examples of CBD implementation at your garden to the new BGCi web pages on access and benefit-sharing. Contact: China Williams & Kate Davis RBG Kew cbdunit@kew.org

THE BGCi logo is a registered trademark of Botanic Gardens Conservation International. All other logos and text are the property of their respective owners. The BGCi logo is a registered trademark of Botanic Gardens Conservation International. All other logos and text are the property of their respective owners. The BGCi logo is a registered trademark of Botanic Gardens Conservation International. All other logos and text are the property of their respective owners.

DIFFICULTIES

- **FUNDING**
- **COMMUNICATION**
- **STAFFING**
- **GARDENS REPRESENTATION**
- **PLANT DIVERSITY LOSS**

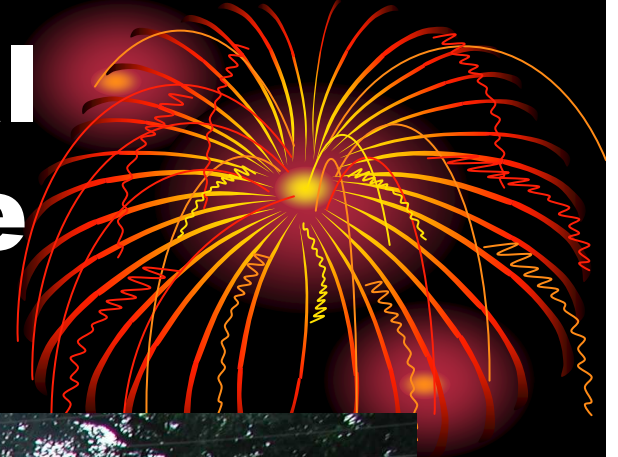


PROPOSALS

- **IMPROVE COMMUNICATION**
- **TWINING OF GARDENS**
- **STAFF EXCHANGE PROGRAM FOR TRAINING**
- **BGCI, ABGN ASSISTANTSHIP**
- **CORPORATE SPONSORSHIP**
- **FUNDED PROJECTS**



Delegates and Local Dignitaries at Limbe Conference



**THANKS FOR YOUR
KIND ATTENTION**

