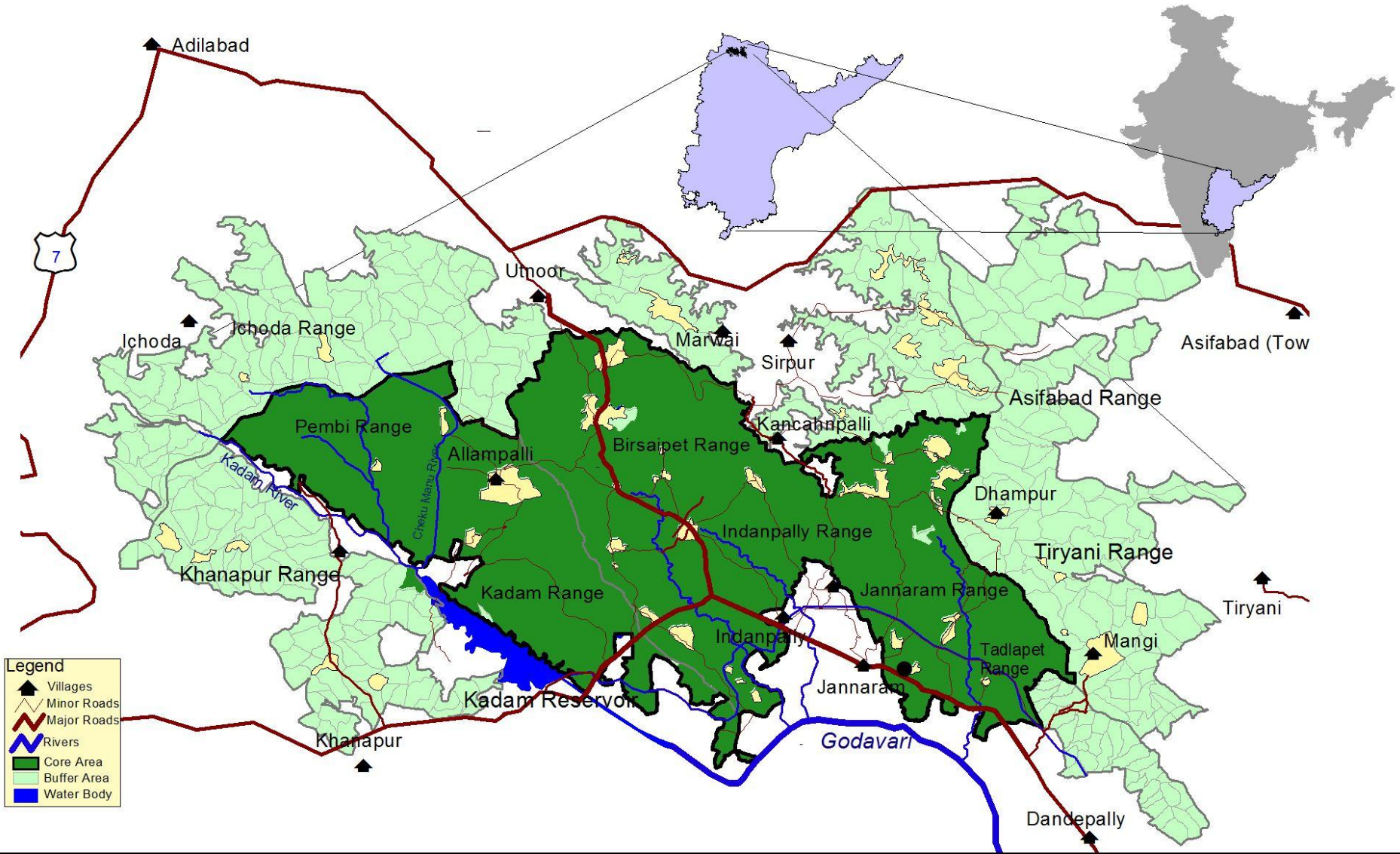


TIGER CONSERVATION- CENTRAL INDIA



LOCATION OF KTR



Kawal Tiger Reserve

Background



- Initially was a Kawal wildlife sanctuary in 1999 with an area of 892.93 Sq.Km.
- During 2010 All India Estimation the decline in tiger population in Northern Andhra Pradesh prompted the Govt. of A.P. to consolidate the main tiger area of North Andhra Pradesh.

SIGNIFICANCE

- *To protect the biodiversity of Deccan plateau of Sahyadri Mountain Ranges along with ecological processes and conservation of wild gene pool.*

What are there in Kawal ?

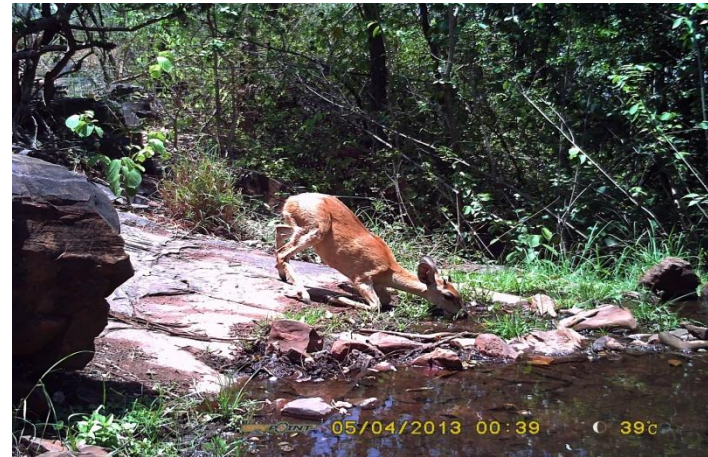
- Area of Tiger Reserve : 892.23 Sq.km (Core)
1123.21 (Buffer)
- No. of Plants present : 673 species
- Amphibians : 10 species
- Reptiles : 34 species
- Birds / avifauna : 310 species
- Mammals : 68 Species.
- Important plant species present : Teak, Rosewood, Diospyros,
Anogeisus, Hardwickia,
Chloroxylon and Bamboo.

- Important Mammals : Tiger, Slothbear, Indian
Gaur, Wild dog, Wolf, Ratel,
Deers (Chital and Sambar),
Antelopes (Black buck,
Gazelle, Nilgai & Chowsinga).



UNIQUENESS OF KAWAL

ANTELOPES OF KAWAL



Spotted Deer

Sambhar



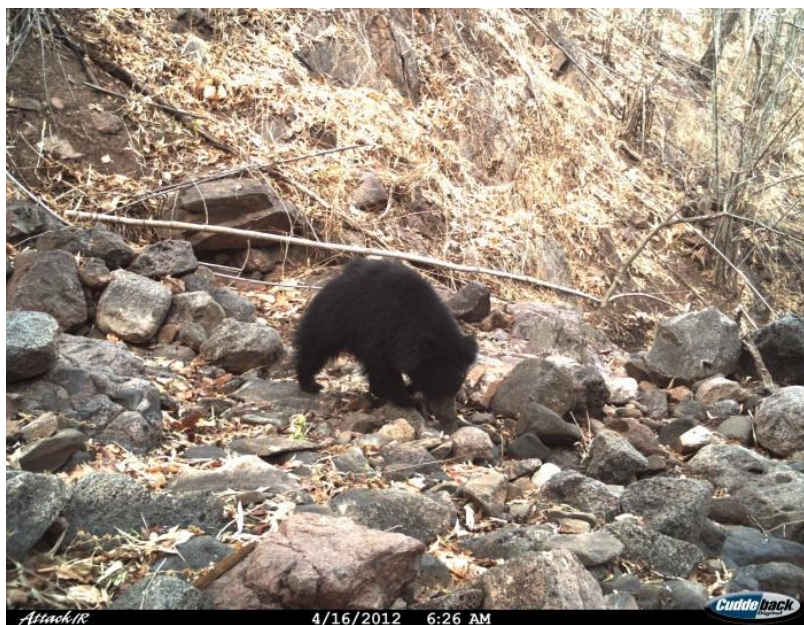
INDIA'S NATIONAL BIRD



Monitoring of Wildlife in Kawal



Contd:



Contd:



Bushnell

01-11-2011 19:51:23



AttackIR

2/2/2012 5:36 PM



AttackIR

3/18/2012 9:33 AM





Attack

5/1/2012 3:30 AM

Cuddeback
Digital

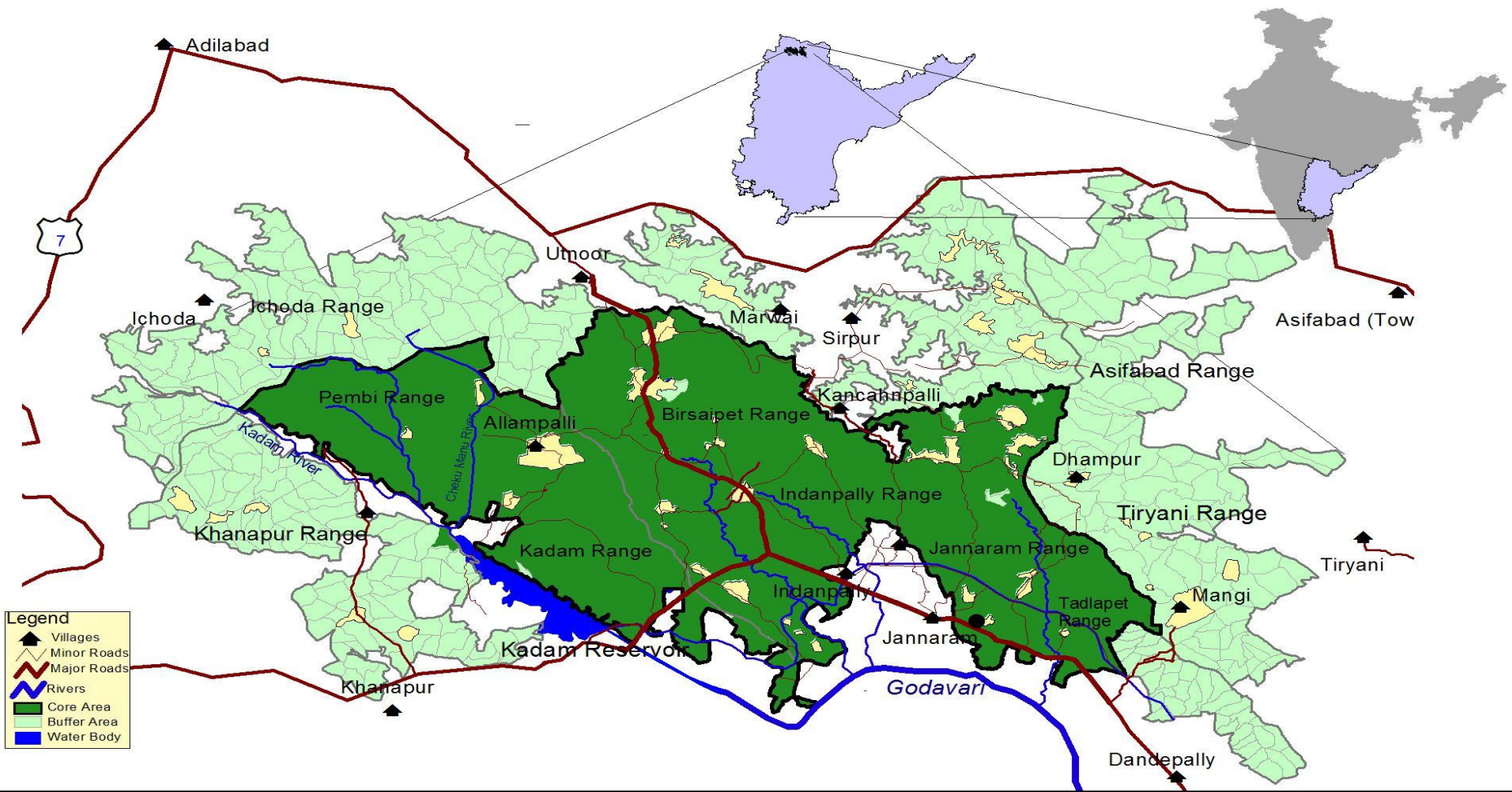
THREATS CONTINUE - KAWAL




- Habitat destruction
- Smuggling and felling
- Extensive sand mining
- Encroachment
- Poaching

AICHI TARGET 11-To restore the bio diversity

2012- Tiger reserve, included 1123 sq km forest.





What has been done in the past 2 years in Kawal to achieve the Aichi Biodiversity targets?

AICHI TARGET 5-

Habitat improvement works

□ Grass land development



- Construction of check dam



- Natural water source development



- Construction of saucer pits in fringe areas





వన్యప్రాణులవేట, అటవీ నేరాలు అనగా చెట్లు నరుకుట, అడవి నుండి ఇసుక రవాణా చేయుట, అక్రమంగా అటవీ భాగంను సేద్యము చేయుట మరియు అడవిలో జరుగు అగ్ని ప్రమాదములకు సంభందించి అటవీ శాఖ Toll Free (టోల్ ఫ్రీ నెం.) కు సమాచారాన్ని ఇచ్చి క్వార్టల్ పులులరక్షిత ప్రదేశము వన్యప్రాణులను మరియు అటవీ సంపదను కాపాడుటలో అటవీ శాఖకు సహకరించండి. సమాచారం తెలిపిన వ్యక్తి సమాచారం ఎవరికీ తెలుపబడదు.

TOLL FREE NO
18004250058



క్వార్టల్ పులులరక్షిత ప్రదేశము
అటవీ మండల అధికారి, జన్నారం (వన్యప్రాణి విభాగం)

GOVT OF ANDHRA PRADESH
FOREST DEPARTMENT
FOREST CONTROLL ROOM
TOLL FREE NO 18004250058
KAWAL TIGER RESERVE
JANNARAM.

AICHI TARGET 9-Fodder development

- Obnoxious weeds have been removed in 300 Ha and (12) Locations attempts made to improve fodder by brushwood fencing of 4-5 feet and planting with the fodder species in the gaps by racking the soil, duly removing weeds in the area.
- Parthenium patches have attempted in Tanks area.
- Lantana removal attempted up to 60 Ha.



AICHI TARGET14,19- SOLAR WATER SYSTEM





AICHI TARGET 11- Improvement of protection of Forests & Wildlife

1. SAND MINING

Controlled Sand mining to the maximum , by utilizing the FRO vehicles, Strike Forces and Mobile Teams and by motivating the people, political leaders, and beneficiaries.



BASE CAMP IN KAWAL CORE AREA



PATROLLING CAMP IN KAWAL



AICHI TARGET 11- Anti-Poaching initiatives



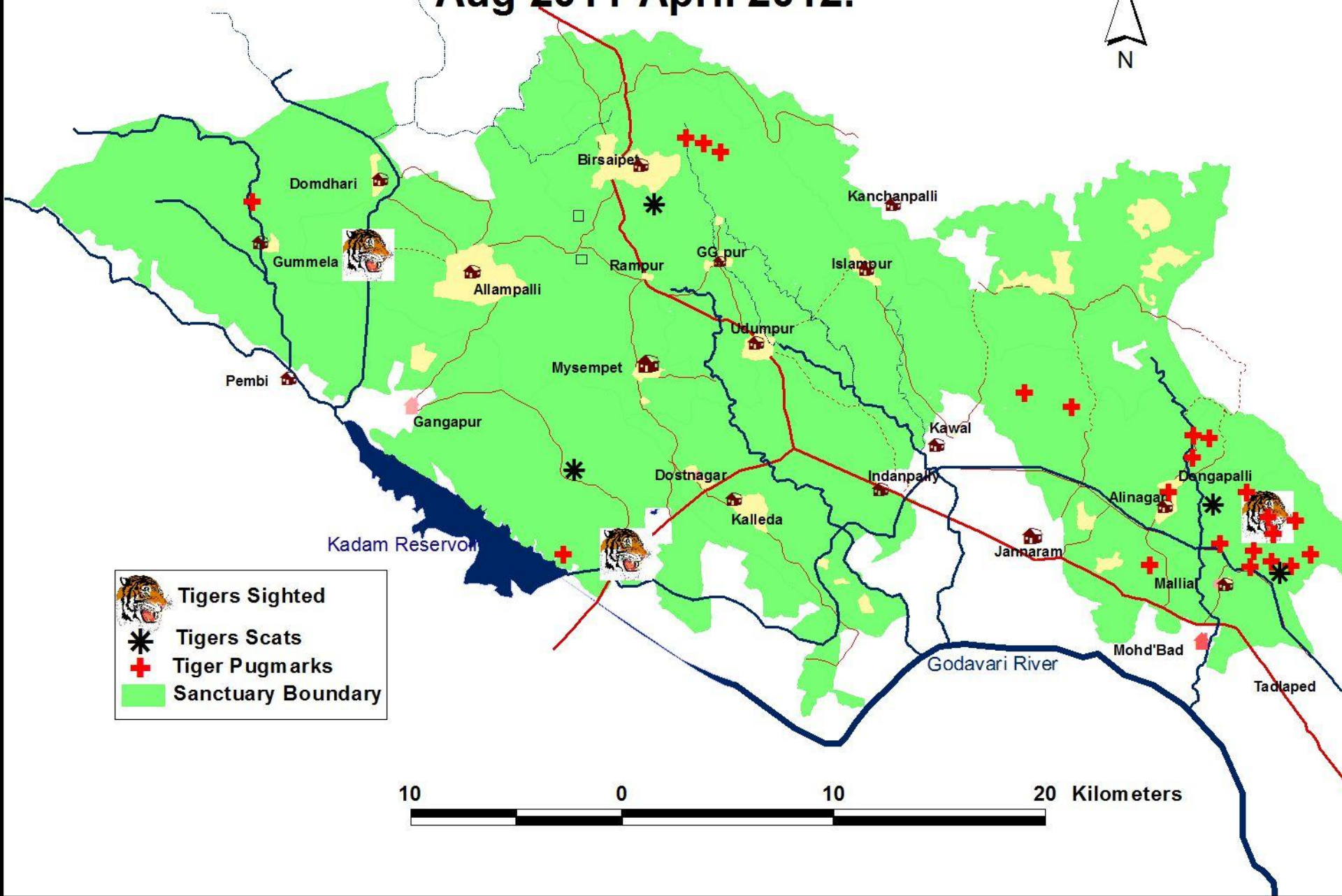
- **Two Anti Poaching squads have been formed with protection watchers and staff. Seizures of snares, traps have been made.**

AICHI TARGET 4,18-

ECO Development Activities

- 128 Tribal villagers are working as Protection watchers in base camps, Strike forces, Anti poaching parties , Check posts and Animal trackers.
- 140 LPG gas connections have been issued in the (2) villages.
- Drinking Water facility through Reverse Osmosis plants have been provided in (3) villages.
- (56) solar street lights installed to meet the requirement of villages in the Core.
- (10) medical camps organized to take care of the villagers in the Core

Tiger Movement Map in Kawal Tiger Reserve, Aug 2011-April 2012.



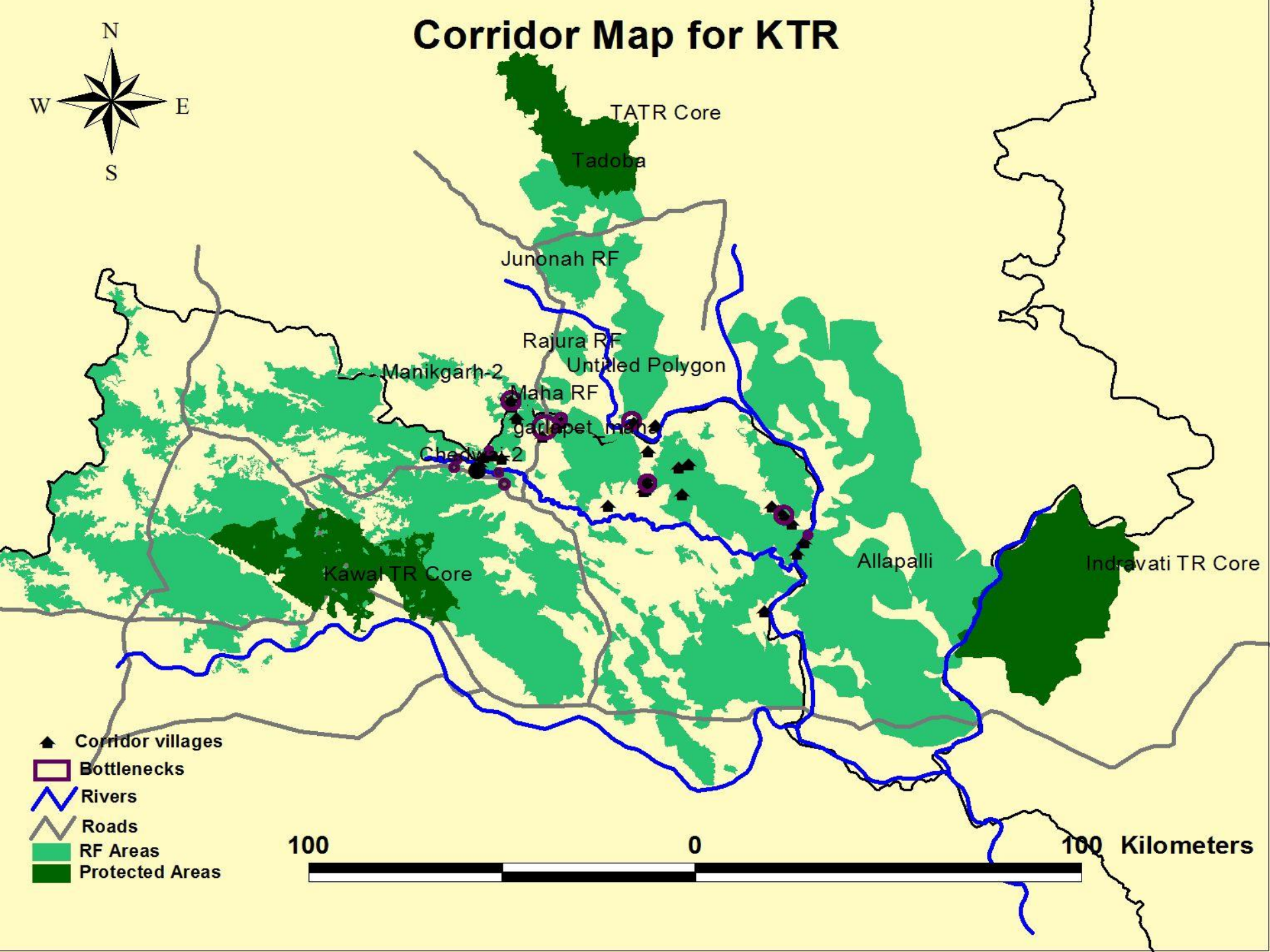
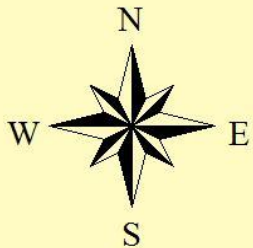
-  Tigers Sighted
-  Tigers Scats
-  Tiger Pugmarks
-  Sanctuary Boundary

10 0 10 20 Kilometers

CRITICS

- No Tiger
- Difficult for relocation
- Poaching
- Extremism

Corridor Map for KTR



- ▲ Corridor villages
- Bottlenecks
- ~ Rivers
- Roads
- RF Areas
- Protected Areas

100

0

100 Kilometers

Surveying and Monitoring



Formation of a Young Team



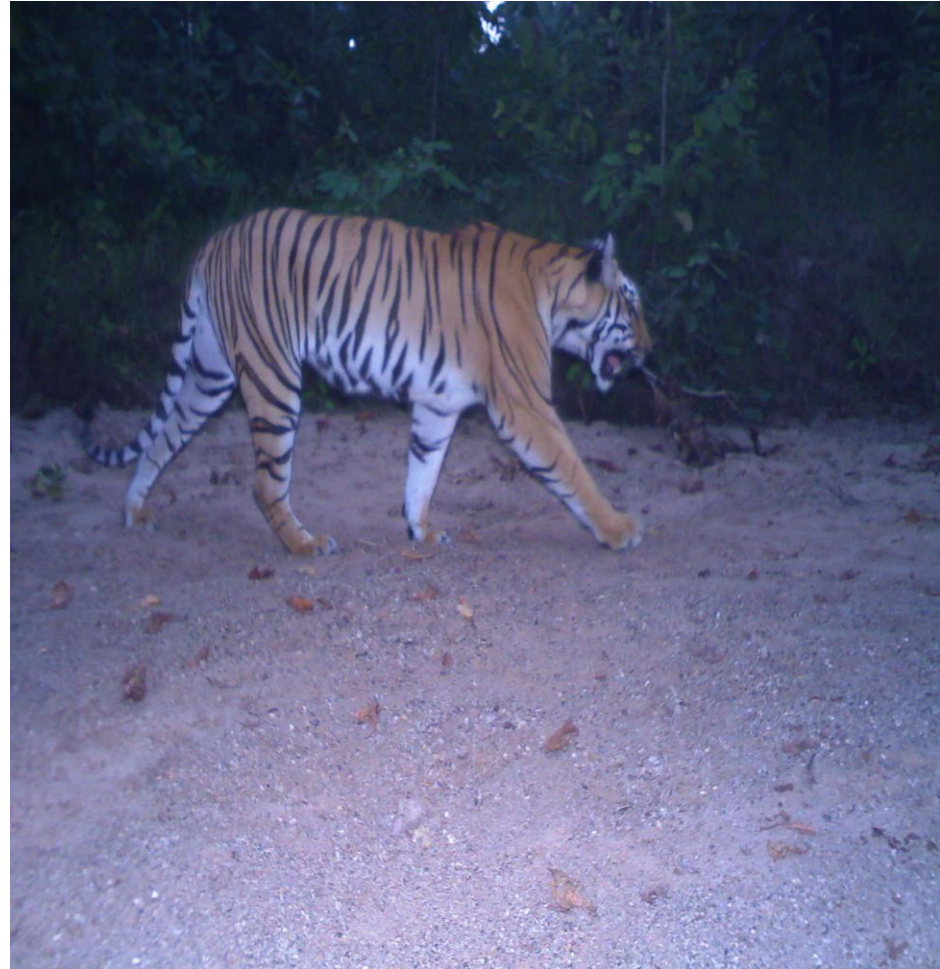
Local Reports Taken Seriously



Tiger Pug Mark



AICHI TARGET 12- FIRST CAMERA TRAP IMAGE



SECOND TIGER IMAGE OF KAWAL



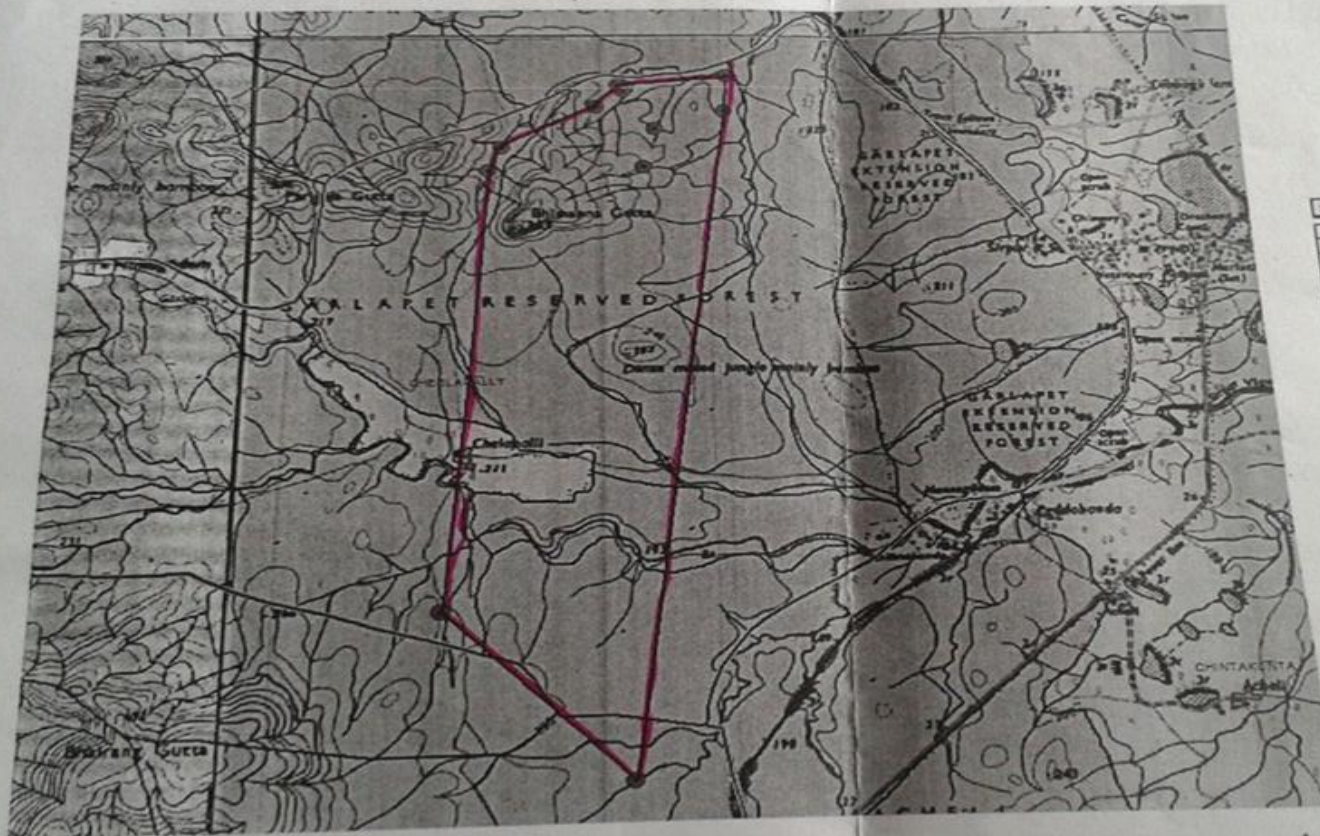


THIRD TIGER IMAGE OF KAWAL



GIS Map of Tiger Movement

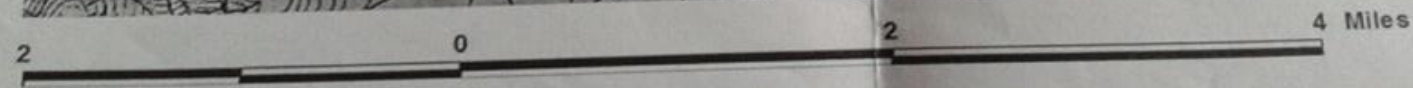
Map showing the Tiger Movement in Sirpur Range of Kaghaznagar Division



- Gps sirpur forest data.shp
- Kaghaznagar-TM.shp
- Kaghaznagar-DEM.shp

Area 11.004 Sq KM

Sl	Lat.	Long
1	19.5229	79.42850
2	19.5260	79.43000
3	19.4688	79.52480
4	19.4821	79.52480
5	19.4852	79.52020
6	19.4825	79.52020
7	19.4887	79.52950
8	19.4826	79.52040
9	19.4844	79.52810
10	19.4844	79.52730
11	19.4825	79.52320
12	19.4324	79.52320
13	19.4825	79.51770
14	19.4888	79.51870
15	19.4840	79.51770
16	19.4914	79.53810



Man – Animal Conflict



AWARENESS PROGRAMS



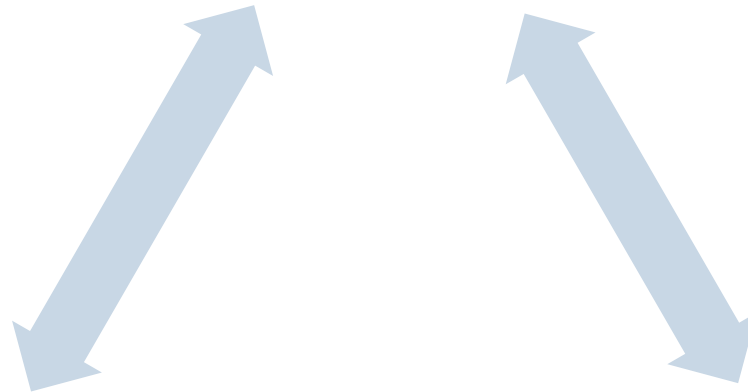
REWARD



Why only Tiger?

AICHI TARGET 12

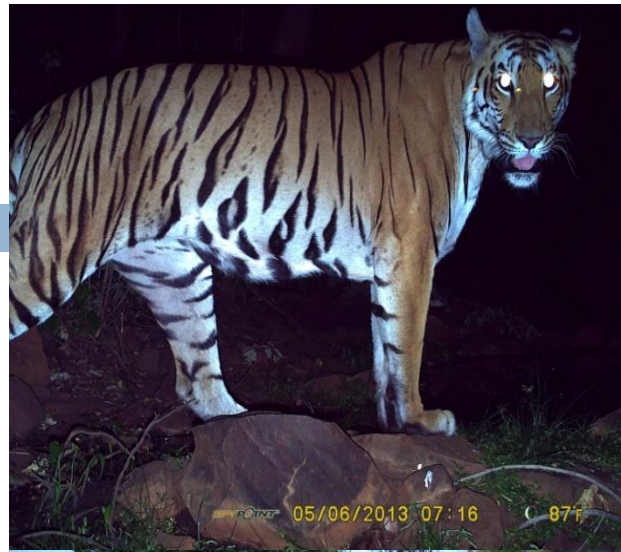
(Prevent extinction of known threatened species)



AICHI TARGET 5
(Avoiding habitat loss)



AICHI TARGET 11
(Protected area)



CONCLUSION

- We have been successful on forming many policies and protocols that are essential for safeguarding and managing the biodiversity.
- However, how effective we are in implementing the policies at ground level ?

THANK YOU

**WILDLIFE: SAVE IT TO CHERISH
OR LEAVE IT TO PERISH**

