



Nestlé

Good Food, Good Life



## Biodiversity conservation – Nestlé point of view

*2016 Business & Biodiversity Forum*

Hans Jöhr

*Head of Corporate Operations Agriculture*

*Cancun, 3 December 2016*

# Feeding 9+ bio people by 2050 *Threats or opportunities*

## Soils & Soil Health



## Biodiversity & Genetics



## Water in Agriculture



## Energy Pricing



## Training & Assistance



## Policy Interventions



# Farmer Connect *Outreach*



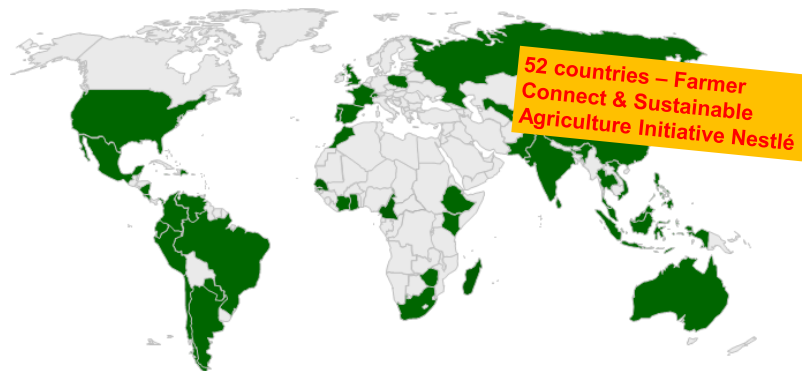
30 milk markets



11 coffee markets



7 cocoa markets



Direct sourcing staff:



Supply chain support staff:

Farmers supplying directly to Nestlé:

**Farmers received training:**

|                                       | 2013           | 2014           | 2015           |
|---------------------------------------|----------------|----------------|----------------|
| Direct sourcing staff:                | 1' 200         | 1'290          | 1'200          |
| Supply chain support staff:           | 11'400         | 12'100         | 9'700          |
| Farmers supplying directly to Nestlé: | 686'000        | 695'000        | 760'000        |
| <b>Farmers received training:</b>     | <b>300'000</b> | <b>375'000</b> | <b>400'000</b> |

Source: CSV Reports 2013, 2014, 2015; SAIN: Sustainable Agriculture Initiative Nestlé



# Genetic erosion *Focus on a small number of crops and traits*

7000 plant species are edible

ONLY

5 cereal crops  
provide 2/3 of  
our plant  
energy intake\*

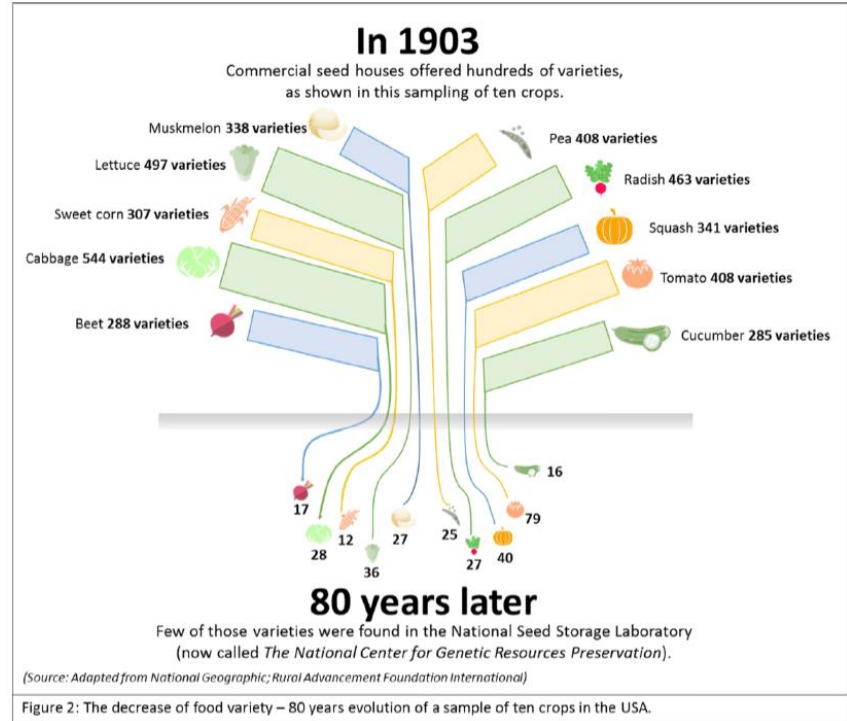
ONLY

12 crops  
provide 75% of  
the world's  
food

Nutrient content varies among  
species and among varieties  
within a species

FAO (2004). *What is happening to agrobiodiversity?* FAO Corporate Document Repository. Rome, Italy.

\* Plant cover 80% of human energy



# Biodiversity *An opportunity for nutrition*

Genetic improvements and optimized environments can increase crop traits such as yields (but) increasing yields may likely reduce concentrations of some other nutrient!

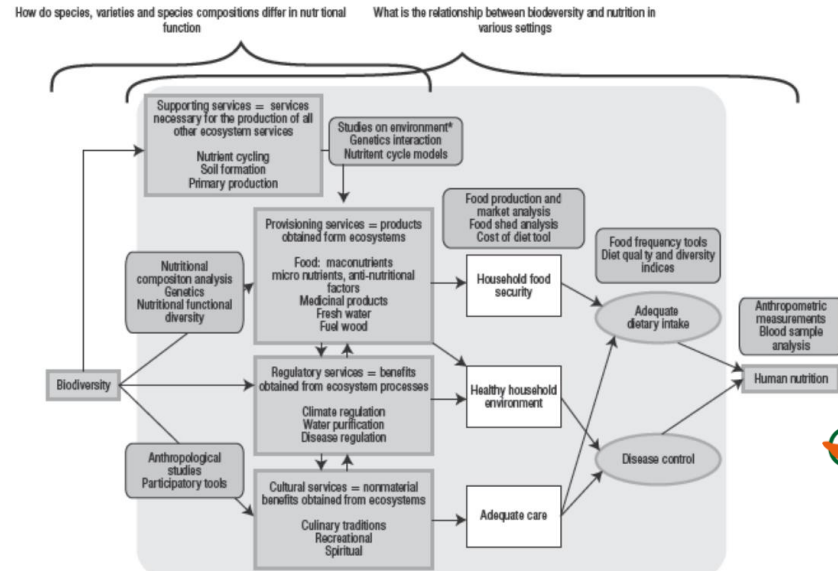
## FOSTERING AGRO-BIODIVERSITY

Increase global nutrition security

Build resilient agro-ecosystems

Contribute to prevent health issues

## BIODIVERSITY FOR NUTRITION



# Nutritional crops *Exploring compositions*



Some sweet potato cultivars can vary in carotenoid content by a factor of 200 or more.



Nutrient composition in Cassava ranges strongly among varieties: per 100 g of edible portions, protein content can vary from 0.7 to 6.4 g and beta-carotene content from <5 to 790 mcg (micrograms).



Iron and zinc content in rice might differ by a factor of 2.5 and 1.5 respectively. Hence, the varieties with higher nutritional content usually are traditional varieties, whereas

# Summary

- **Sustainable Agriculture Initiative Nestlé (SAIN):** Dissemination of good agricultural practices and care on biodiversity.
- **Integrate biodiversity** into all our Nestlé programs such as Farmer Connect, the Nescafé Plan, the Cocoa Plan, the Dairy Sourcing Plan, or the Nespresso AAA.
- **Biodiversity stewardship:** advocate and promote biodiversity topics throughout different industry platforms.

